



harmony[®]encore[™]

METER DATA MANAGEMENT + ENTERPRISE SOLUTION SOFTWARE





harmony[®]encore[™]

METER DATA MANAGEMENT + ENTERPRISE SOLUTION SOFTWARE

The Harmony Encore Suite is an open platform designed to be universally compatible with every Mobile AMR or AMI Network on the market today. How the data arrives isn't important because Harmony Encore is system agnostic. Its integrated Google[®] Mapping Tools and advanced Meter Data Management (MDM) features provide an exceptional environment for managing, reporting, and analyzing advanced metering infrastructure and mobile drive-by AMR information. Leveraging the Microsoft[®] Azure[™] cloud, Harmony Encore delivers super-fast performance bringing the Internet of Things (IoT) into any sized water utility.

Harmony Encore is compatible with every* utility billing system on the market that supports the common Flat File Transfer. Harmony Encore together with integrated GoAigua Analytics enhances and amplifies the value from a utility's CIS, GIS, SCADA, and a wide variety of Asset Management Software.



* To the best of our knowledge at the time of publishing.

HARMONY ENCORE SOFTWARE METER DATA MANAGEMENT + ANALYTICS



INFORMATION STUNNINGLY PRESENTED

Harmony Encore represents much more than a facelift to our award-winning Harmony MDM software. We've completely reimaged our software with faster performance, a refined, more intuitive user experience, and improved functionality.

Harmony Encore is the direct result of ideas and input from collaboration with water utilities during early design. Data is made more useful through enhanced clarity and design simplicity. Easily review system-wide consumption and make sense of it with a wide array of chart and map views. Analyze consumption trends relative to precipitation with Harmony Encore's "Consumption Cluster" mapping tool for a graphical model of high-and-low consumption regions.

go-aigua

GOAIGUA INTEGRATION

Harmony Encore brings the benefit of our partnership with GoAigua – a global leader in data analytics and utility digital transformation – to deliver a brilliant, fully integrated, seamless data solution featuring AI-enabled predictive analytic capabilities. GoAigua brings additional features which act as a value-multiplier to the many data sources within a water utility.

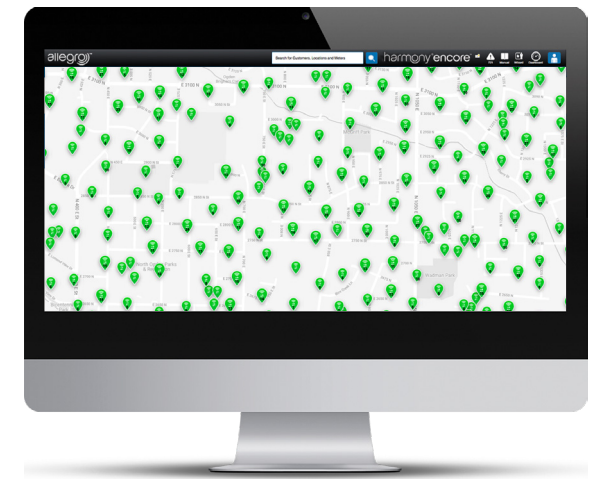


VISIBILITY SNAPSHOT

- Technology platform agnostic - Harmony Encore loves 3rd party data
- Simple, scalable HANDHELD → AMR → AMI technology migration
- Dynamic 2-way communication with endpoints and field assets
- Scalable, Microsoft Azure[™] Cloud hosted software supports any account size
- Cross platform SaaS works seamlessly with Windows and Apple environments
- Multiple GIS data layers including Google Streetview[™] for quick service location inspection prior to truck roll
- Easily create District Metered Areas (DMA) with Harmony Encore's Polygon + Tool[™] to analyze water loss and flow

24/7 MONITORING

Harmony Encore monitors both water loss and network performance in real time using Allegro Licensed AMI. Critical alerts such as leak, tamper or reverse flow trigger timely notification to utility personnel. Leverage an AMI network's two-way communication capabilities using On-Demand Reads and Data Logging directly from within Harmony Encore. Quickly scroll and zoom to view RF performance and network health to preemptively manage issues before they become serious.



HARMONY ENCORE GETS ALONG WITH EVERY METER DATA SOURCE



HARMONY ENCORE'S FLEXIBLE DATA MANAGEMENT

Harmony Encore simply loves data and it's incredibly accommodating regardless of which manufacturer's brand it comes from or the technology type used to provide it. Broad interoperability is a cornerstone in Harmony Encore's development. All Allegro Licensed, Allegro Cellular, and Allegro IoT Advanced Meter Infrastructure (AMI) technologies innately integrate with Harmony Encore - it's even backwards compatible with Master Meter's 3G Mobile AMR meter reading system and earlier hand-held data systems.

The GPS-based Mapping software means that vehicles and personnel are always connected for asset management and inventory controls. Leverage the Microsoft® Azure™ Cloud Platform for seamless data integration between Harmony Enterprise Platform and Harmony Mobile™.

allegro[®]
licensed

allegro[®]
cellular

allegro[®]
iot

REVENUE IMPACT ALERTS™

Leak Alerts and Flow Monitoring assist in reclaiming lost revenue from unaccounted for water and right-sizing of meters. In addition, notifications for theft and tamper are relayed back to the Cloud for analysis and action. Inactive meters are also identified and queued for inspection.

ANY METER. ANYWHERE.

Harmony Encore's integrated API capabilities will eliminate 3rd party software incompatibility challenges and foster seamless integration and system future proofing. This new level of software flexibility makes possible the integration of nearly every meter data source and for every meter. The utility receives a robust, multifaceted data platform that supports two-way communication and provides consumption analysis down to 15 minutes. Remote programming of Meters and Remote Firmware Upgrades are also available through Harmony Encore's Enterprise platform while using the Allegro AMI system.



FEATURES FOCUS:

- MDM is agnostic towards the chosen meter and AMI tech
- Flexible, modular software is forward-ready to support future growth in functionality
- Secure offsite cloud-based data redundancy and remote storage
- Integrated predictive analytics through GoAigua partnership, useful built-in reporting, and information dashboards
- Integration of external data integration: GIS, CIS, SCADA, and more

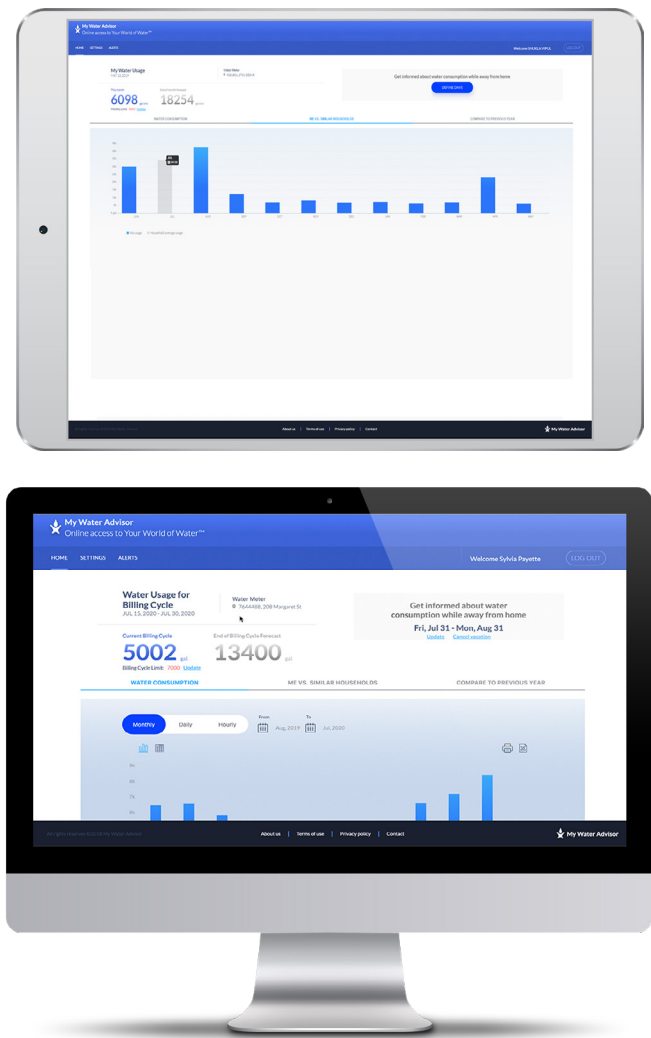
MY WATER ADVISOR™

CUSTOMER ENGAGEMENT SUITE



CUSTOMER WEB PORTAL + SMART PHONE INTEGRATION

Place the power of Harmony Encore in the hands of your utility customer, with the My Water Advisor™ customer engagement web portal. The online application allows for convenient access to up-to-date hourly usage information. The chart view allows for daily, monthly, and yearly review of water usage and also shows a comparison to the user’s peers for real accountability. This full-featured water portal allows the user to set up alerts for on-premises leak detection, over-budget notifications, and gives the ability to set vacation periods to be notified of unusual, unauthorized usage while a customer is away.



Both iOS and Android can easily display My Water Advisor™. This water management software for the consumer puts the power of the online portal in the rate-payer’s hands allowing for simple management of their usage via a smart phone.



MOVING AT THE SPEED OF TECHNOLOGY™

Master Meter provides water utilities with precise digital measurement, data delivery, and water management software that optimize revenue, improves efficiencies, and promote water stewardship through enhanced customer engagement. Master Meter continually expands its solutions portfolio of new and innovative smart water technologies in support of today’s highly dynamic water utility business environment, and the water department’s rapidly evolving role within a Smart City and IoT strategic plan. Our smart water brands include Sonata & Octave Ultrasonic meters, Allegro AMI, Harmony MDM, and My Water Advisor Portal.



MASTERMETER.COM

101 Regency Parkway, Mansfield, Tx 76063

Toll Free - 800.765.6518

E-mail - innovate@mastermeter.com

Get the
Complete Brochure

