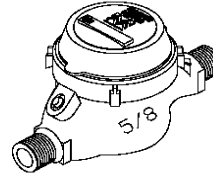


Master Meter Product List
Effective July 1, 2004

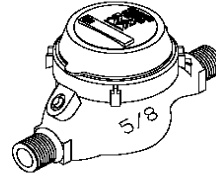


TOP LOAD COLD WATER MULTI-JET METERS

5/8" MJ BRONZE BODY			
Size	Register	Part Number	
FLAT GLASS DIRECT READ			
5/8"	Flat Glass USG Big Dial Register w/Bronze Lid	MJ04-5AA-AAA-2	
5/8"	Flat Glass CF Big Dial Register w/Bronze Lid	MJ04-6AA-AAA-2	
DIALOG REGISTERS AND ELECTRONICS			
5/8"	DIALOG USG Register w/Plastic Lid	MJ04-1BD-AAA-2	
5/8"	DIALOG CF Register w/Plastic Lid	MJ04-2BD-AAA-2	
5/8"	DIALOG USG Register w/Bronze Lid	MJ04-1BM-AAA-2	
5/8"	DIALOG CF Register w/Bronze Lid	MJ04-2BM-AAA-2	
5/8"	DIALOG USG Register w/DIALOG Module w/ReadPad	MJ04-1BU-AAA-2	
5/8"	DIALOG CF Register w/DIALOG Module w/ReadPad	MJ04-2BU-AAA-2	
5/8"	DIALOG USG Register w/Dual Switch Module	MJ04-1BN-AAA-2	
5/8"	DIALOG CF Register w/Dual Switch Module	MJ04-2BN-AAA-2	
5/8"	DIALOG USG Register w/Single Switch Module	MJ04-1BP-AAA-2	
5/8"	DIALOG CF Register w/Single Switch Module	MJ04-2BP-AAA-2	
CONTACT HEAD REGISTERS			
5/8"	Contact Head USG Register & Reed Switch Assembly 1/10 Gal. Pulse	MJ04-1CG-AAA-2	
5/8"	Contact Head USG Register & Reed Switch Assembly 1 Gal. Pulse	MJ04-1CH-AAA-2	
5/8"	Contact Head USG Register & Reed Switch Assembly 10 Gal. Pulse	MJ04-1CI-AAA-2	
5/8"	Contact Head USG Register w/Dual Electrical Output 1/10 Gal. Pulse	MJ04-1IG-AAA-2	
5/8"	Contact Head USG Register w/Dual Electrical Output 1 Gal. Pulse	MJ04-1IH-AAA-2	
5/8"	Contact Head USG Register w/Dual Electrical Output 10 Gal. Pulse	MJ04-1II-AAA-2	
<i>Note: Contact head registers can be supplied in Cubic Feet. Contact Master Meter for proper part number.</i>			
RATE OF FLOW REGISTERS			
5/8"	Rate of Flow Register	MJ04-1HA-AAA-2	
RECLAIM REGISTERS			
5/8"	Reclaim Flat Glass USG Register w/Bronze Lid	MJ04-1DA-AAA-2	
5/8"	Reclaim Flat Glass CF Register w/Bronze Lid	MJ04-2DA-AAA-2	
5/8"	Reclaim DIALOG USG Register w/Plastic Lid	MJ04-1RD-AAA-2	
5/8"	Reclaim DIALOG CF Register w/Plastic Lid	MJ04-2RD-AAA-2	
5/8"	Reclaim DIALOG USG Register w/Bronze Lid	MJ04-1RM-AAA-2	
5/8"	Reclaim DIALOG CF Register w/Bronze Lid	MJ04-2RM-AAA-2	
5/8"	Reclaim DIALOG USG Register w/DIALOG Module w/ReadPad	MJ04-1RU-AAA-2	
5/8"	Reclaim DIALOG CF Register w/DIALOG Module w/ReadPad	MJ04-2RU-AAA-2	
METER COUPLINGS			
5/8"	1/2" Bronze Meter Coupling w/Gasket (Price per each coupling)	901 1/2 CPL	

Note: *The US Gallon and Cubic Feet registers are identified above by the letters USG and CF. Meters w/ DIALOG modules, Dual & Single Switch modules and Contact Head registers will be shipped w/out lid.*

Master Meter Product List
Effective July 1, 2004



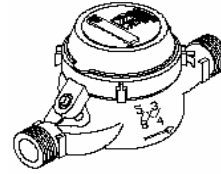
TOP LOAD COLD WATER MULTI-JET METERS

5/8" MJ BRONZE BODY WITH FROST PROTECTION

Size	Register	Part Number	
FLAT GLASS DIRECT READ			
5/8"	Flat Glass USG Big Dial Register w/Bronze Lid	MJ04-5AA-BAA-2	
5/8"	Flat Glass CF Big Dial Register w/Bronze Lid	MJ04-6AA-BAA-2	
DIALOG REGISTERS AND ELECTRONICS			
5/8"	DIALOG USG Register w/Plastic Lid	MJ04-1BD-BAA-2	
5/8"	DIALOG CF Register w/Plastic Lid	MJ04-2BD-BAA-2	
5/8"	DIALOG USG Register w/Bronze Lid	MJ04-1BM-BAA-2	
5/8"	DIALOG CF Register w/Bronze Lid	MJ04-2BM-BAA-2	
5/8"	DIALOG USG Register w/DIALOG Module w/ReadPad	MJ04-1BU-BAA-2	
5/8"	DIALOG CF Register w/DIALOG Module w/ReadPad	MJ04-2BU-BAA-2	
5/8"	DIALOG USG Register w/Dual Switch Module	MJ04-1BN-BAA-2	
5/8"	DIALOG CF Register w/Dual Switch Module	MJ04-2BN-BAA-2	
5/8"	DIALOG USG Register w/Single Switch Module	MJ04-1BP-BAA-2	
5/8"	DIALOG CF Register w/Single Switch Module	MJ04-2BP-BAA-2	
CONTACT HEAD REGISTERS			
5/8"	Contact Head USG Register & Reed Switch Assembly 1/10 Gal. Pulse	MJ04-1CG-BAA-2	
5/8"	Contact Head USG Register & Reed Switch Assembly 1 Gal. Pulse	MJ04-1CH-BAA-2	
5/8"	Contact Head USG Register & Reed Switch Assembly 10 Gal. Pulse	MJ04-1CI-BAA-2	
5/8"	Contact Head USG Register w/Dual Electrical Output 1/10 Gal. Pulse	MJ04-1IG-BAA-2	
5/8"	Contact Head USG Register w/Dual Electrical Output 1 Gal. Pulse	MJ04-1IH-BAA-2	
5/8"	Contact Head USG Register w/Dual Electrical Output 10 Gal. Pulse	MJ04-1II-BAA-2	
<i>Note: Contact head registers can be supplied in Cubic Feet. Contact Master Meter for proper part number.</i>			
RATE OF FLOW REGISTERS			
5/8"	Rate of Flow Register	MJ04-1HA-BAA-2	
RECLAIM REGISTERS			
5/8"	Reclaim Flat Glass USG Register w/Bronze Lid	MJ04-1DA-BAA-2	
5/8"	Reclaim Flat Glass CF Register w/Bronze Lid	MJ04-2DA-BAA-2	
5/8"	Reclaim DIALOG USG Register w/Plastic Lid	MJ04-1RD-BAA-2	
5/8"	Reclaim DIALOG CF Register w/Plastic Lid	MJ04-2RD-BAA-2	
5/8"	Reclaim DIALOG USG Register w/Bronze Lid	MJ04-1RM-BAA-2	
5/8"	Reclaim DIALOG CF Register w/Bronze Lid	MJ04-2RM-BAA-2	
5/8"	Reclaim DIALOG USG Register w/DIALOG Module w/ReadPad	MJ04-1RU-BAA-2	
5/8"	Reclaim DIALOG CF Register w/DIALOG Module w/ReadPad	MJ04-2RU-BAA-2	
METER COUPLINGS			
5/8"	1/2" Bronze Meter Coupling w/Gasket (Price per each coupling)	901 1/2 CPL	

Note: The US Gallon and Cubic Feet registers are identified above by the letters USG and CF.
Meters w/ DIALOG modules, Dual & Single Switch modules and Contact Head registers will be shipped w/out lid.

Master Meter Product List
Effective July 1, 2004

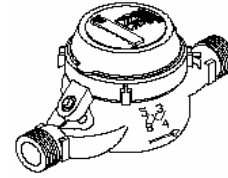


TOP LOAD COLD WATER MULTI-JET METERS

5/8" X 3/4" MJ BRONZE BODY			
Size	Register	Part Number	
FLAT GLASS DIRECT READ			
5/8" X 3/4"	Flat Glass USG Big Dial Register w/Bronze Lid	MJ05-5AA-AAA-2	
5/8" X 3/4"	Flat Glass CF Big Dial Register w/Bronze Lid	MJ05-6AA-AAA-2	
DIALOG REGISTERS AND ELECTRONICS			
5/8" X 3/4"	DIALOG USG Register w/Plastic Lid	MJ05-1BD-AAA-2	
5/8" X 3/4"	DIALOG CF Register w/Plastic Lid	MJ05-2BD-AAA-2	
5/8" X 3/4"	DIALOG USG Register w/Bronze Lid	MJ05-1BM-AAA-2	
5/8" X 3/4"	DIALOG CF Register w/Bronze Lid	MJ05-2BM-AAA-2	
5/8" X 3/4"	DIALOG USG Register w/DIALOG Module w/ReadPad	MJ05-1BU-AAA-2	
5/8" X 3/4"	DIALOG CF Register w/DIALOG Module w/ReadPad	MJ05-2BU-AAA-2	
5/8" X 3/4"	DIALOG USG Register w/Dual Switch Module	MJ05-1BN-AAA-2	
5/8" X 3/4"	DIALOG CF Register w/Dual Switch Module	MJ05-2BN-AAA-2	
5/8" X 3/4"	DIALOG USG Register w/Single Switch Module	MJ05-1BP-AAA-2	
5/8" X 3/4"	DIALOG CF Register w/Single Switch Module	MJ05-2BP-AAA-2	
CONTACT HEAD REGISTERS			
5/8" X 3/4"	Contact Head USG Register & Reed Switch Assembly 1/10 Gal. Pulse	MJ05-1CG-AAA-2	
5/8" X 3/4"	Contact Head USG Register & Reed Switch Assembly 1 Gal. Pulse	MJ05-1CH-AAA-2	
5/8" X 3/4"	Contact Head USG Register & Reed Switch Assembly 10 Gal. Pulse	MJ05-1CI-AAA-2	
5/8" X 3/4"	Contact Head USG Register w/Dual Electrical Output 1/10 Gal. Pulse	MJ05-1IG-AAA-2	
5/8" X 3/4"	Contact Head USG Register w/Dual Electrical Output 1 Gal. Pulse	MJ05-1IH-AAA-2	
5/8" X 3/4"	Contact Head USG Register w/Dual Electrical Output 10 Gal. Pulse	MJ05-1II-AAA-2	
<i>Note: Contact head registers can be supplied in Cubic Feet. Contact Master Meter for proper part number.</i>			
RATE OF FLOW REGISTERS			
5/8" X 3/4"	Rate of Flow Register	MJ05-1HA-AAA-2	
RECLAIM REGISTERS			
5/8" X 3/4"	Reclaim Flat Glass USG Register w/Bronze Lid	MJ05-1DA-AAA-2	
5/8" X 3/4"	Reclaim Flat Glass CF Register w/Bronze Lid	MJ05-2DA-AAA-2	
5/8" X 3/4"	Reclaim DIALOG USG Register w/Plastic Lid	MJ05-1RD-AAA-2	
5/8" X 3/4"	Reclaim DIALOG CF Register w/Plastic Lid	MJ05-2RD-AAA-2	
5/8" X 3/4"	Reclaim DIALOG USG Register w/Bronze Lid	MJ05-1RM-AAA-2	
5/8" X 3/4"	Reclaim DIALOG CF Register w/Bronze Lid	MJ05-2RM-AAA-2	
5/8" X 3/4"	Reclaim DIALOG USG Register w/DIALOG Module w/ReadPad	MJ05-1RU-AAA-2	
5/8" X 3/4"	Reclaim DIALOG CF Register w/DIALOG Module w/ReadPad	MJ05-2RU-AAA-2	
METER COUPLINGS			
5/8" X 3/4"	3/4" Bronze Meter Coupling w/Gasket (Price per each coupling)	902 3/4 CPL	

Note: *The US Gallon and Cubic Feet registers are identified above by the letters USG and CF.
Meters w/ DIALOG modules, Dual & Single Switch modules and Contact Head registers will be shipped w/out lid.*

Master Meter Product List
Effective July 1, 2004



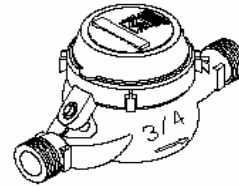
TOP LOAD COLD WATER MULTI-JET METERS

5/8" X 3/4" MJ BRONZE BODY WITH FROST PROTECTION

Size	Register	Part Number	
FLAT GLASS DIRECT READ			
5/8" X 3/4"	Flat Glass USG Big Dial Register w/Bronze Lid	MJ05-5AA-BAA-2	
5/8" X 3/4"	Flat Glass CF Big Dial Register w/Bronze Lid	MJ05-6AA-BAA-2	
DIALOG REGISTERS AND ELECTRONICS			
5/8" X 3/4"	DIALOG USG Register w/Plastic Lid	MJ05-1BD-BAA-2	
5/8" X 3/4"	DIALOG CF Register w/Plastic Lid	MJ05-2BD-BAA-2	
5/8" X 3/4"	DIALOG USG Register w/Bronze Lid	MJ05-1BM-BAA-2	
5/8" X 3/4"	DIALOG CF Register w/Bronze Lid	MJ05-2BM-BAA-2	
5/8" X 3/4"	DIALOG USG Register w/DIALOG Module w/ReadPad	MJ05-1BU-BAA-2	
5/8" X 3/4"	DIALOG CF Register w/DIALOG Module w/ReadPad	MJ05-2BU-BAA-2	
5/8" X 3/4"	DIALOG USG Register w/Dual Switch Module	MJ05-1BN-BAA-2	
5/8" X 3/4"	DIALOG CF Register w/Dual Switch Module	MJ05-2BN-BAA-2	
5/8" X 3/4"	DIALOG USG Register w/Single Switch Module	MJ05-1BP-BAA-2	
5/8" X 3/4"	DIALOG CF Register w/Single Switch Module	MJ05-2BP-BAA-2	
CONTACT HEAD REGISTERS			
5/8" X 3/4"	Contact Head USG Register & Reed Switch Assembly 1/10 Gal. Pulse	MJ05-1CG-BAA-2	
5/8" X 3/4"	Contact Head USG Register & Reed Switch Assembly 1 Gal. Pulse	MJ05-1CH-BAA-2	
5/8" X 3/4"	Contact Head USG Register & Reed Switch Assembly 10 Gal. Pulse	MJ05-1CI-BAA-2	
5/8" X 3/4"	Contact Head USG Register w/Dual Electrical Output 1/10 Gal. Pulse	MJ05-1IG-BAA-2	
5/8" X 3/4"	Contact Head USG Register w/Dual Electrical Output 1 Gal. Pulse	MJ05-1IH-BAA-2	
5/8" X 3/4"	Contact Head USG Register w/Dual Electrical Output 10 Gal. Pulse	MJ05-1II-BAA-2	
<i>Note: Contact head registers can be supplied in Cubic Feet. Contact Master Meter for proper part number.</i>			
RATE OF FLOW REGISTERS			
5/8" X 3/4"	Rate of Flow Register	MJ05-1HA-BAA-2	
RECLAIM REGISTERS			
5/8" X 3/4"	Reclaim Flat Glass USG Register w/Bronze Lid	MJ05-1DA-BAA-2	
5/8" X 3/4"	Reclaim Flat Glass CF Register w/Bronze Lid	MJ05-2DA-BAA-2	
5/8" X 3/4"	Reclaim DIALOG USG Register w/Plastic Lid	MJ05-1RD-BAA-2	
5/8" X 3/4"	Reclaim DIALOG CF Register w/Plastic Lid	MJ05-2RD-BAA-2	
5/8" X 3/4"	Reclaim DIALOG USG Register w/Bronze Lid	MJ05-1RM-BAA-2	
5/8" X 3/4"	Reclaim DIALOG CF Register w/Bronze Lid	MJ05-2RM-BAA-2	
5/8" X 3/4"	Reclaim DIALOG USG Register w/DIALOG Module w/ReadPad	MJ05-1RU-BAA-2	
5/8" X 3/4"	Reclaim DIALOG CF Register w/DIALOG Module w/ReadPad	MJ05-2RU-BAA-2	
METER COUPLINGS			
5/8" X 3/4"	3/4" Bronze Meter Coupling w/Gasket (Price per each coupling)	902 3/4 CPL	

Note: The US Gallon and Cubic Feet registers are identified above by the letters USG and CF.
Meters w/ DIALOG modules, Dual & Single Switch modules and Contact Head registers will be shipped w/out lid.

Master Meter Product List
Effective July 1, 2004

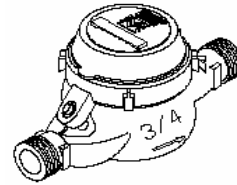


TOP LOAD COLD WATER MULTI-JET METERS

3/4" X 7-1/2" MJ BRONZE BODY			
Size	Register	Part Number	
FLAT GLASS DIRECT READ			
3/4" (7-1/2")	Flat Glass USG Register w/Bronze Lid	MJ06-1AA-AAA-2	
3/4" (7-1/2")	Flat Glass CF Register w/Bronze Lid	MJ06-2AA-AAA-2	
DIALOG REGISTERS AND ELECTRONICS			
3/4" (7-1/2")	DIALOG USG Register w/Plastic Lid	MJ06-1BD-AAA-2	
3/4" (7-1/2")	DIALOG CF Register w/Plastic Lid	MJ06-2BD-AAA-2	
3/4" (7-1/2")	DIALOG USG Register w/Bronze Lid	MJ06-1BM-AAA-2	
3/4" (7-1/2")	DIALOG CF Register w/Bronze Lid	MJ06-2BM-AAA-2	
3/4" (7-1/2")	DIALOG USG Register w/DIALOG Module w/ReadPad	MJ06-1BU-AAA-2	
3/4" (7-1/2")	DIALOG CF Register w/DIALOG Module w/ReadPad	MJ06-2BU-AAA-2	
3/4" (7-1/2")	DIALOG USG Register w/Dual Switch Module	MJ06-1BN-AAA-2	
3/4" (7-1/2")	DIALOG CF Register w/Dual Switch Module	MJ06-2BN-AAA-2	
3/4" (7-1/2")	DIALOG USG Register w/Single Switch Module	MJ06-1BP-AAA-2	
3/4" (7-1/2")	DIALOG CF Register w/Single Switch Module	MJ06-2BP-AAA-2	
CONTACT HEAD REGISTERS			
3/4" (7-1/2")	Contact Head USG Register & Reed Switch Assembly 1 Gal. Pulse	MJ06-1CH-AAA-2	
3/4" (7-1/2")	Contact Head USG Register & Reed Switch Assembly 10 Gal. Pulse	MJ06-1CI-AAA-2	
3/4" (7-1/2")	Contact Head USG Register & Reed Switch Assembly 100 Gal. Pulse	MJ06-1CJ-AAA-2	
3/4" (7-1/2")	Contact Head USG Register w/Dual Electrical Output 1 Gal. Pulse	MJ06-1IH-AAA-2	
3/4" (7-1/2")	Contact Head USG Register w/Dual Electrical Output 10 Gal. Pulse	MJ06-1II-AAA-2	
3/4" (7-1/2")	Contact Head USG Register w/Dual Electrical Output 100 Gal. Pulse	MJ06-1IJ-AAA-2	
<i>Note: Contact head registers can be supplied in Cubic Feet. Contact Master Meter for proper part number.</i>			
RATE OF FLOW REGISTERS			
3/4" (7-1/2")	Rate of Flow Register	MJ06-1HA-AAA-2	
RECLAIM REGISTERS			
3/4" (7-1/2")	Reclaim Flat Glass USG Register w/Bronze Lid	MJ06-1DA-AAA-2	
3/4" (7-1/2")	Reclaim Flat Glass CF Register w/Bronze Lid	MJ06-2DA-AAA-2	
3/4" (7-1/2")	Reclaim DIALOG USG Register w/Plastic Lid	MJ06-1RD-AAA-2	
3/4" (7-1/2")	Reclaim DIALOG CF Register w/Plastic Lid	MJ06-2RD-AAA-2	
3/4" (7-1/2")	Reclaim DIALOG USG Register w/Bronze Lid	MJ06-1RM-AAA-2	
3/4" (7-1/2")	Reclaim DIALOG CF Register w/Bronze Lid	MJ06-2RM-AAA-2	
3/4" (7-1/2")	Reclaim DIALOG USG Register w/DIALOG Module w/ReadPad	MJ06-1RU-AAA-2	
3/4" (7-1/2")	Reclaim DIALOG CF Register w/DIALOG Module w/ReadPad	MJ06-2RU-AAA-2	
METER COUPLINGS			
3/4" (7-1/2")	3/4" Bronze Meter Coupling w/Gasket (Price per each coupling)	902 3/4 CPL	

Note: The US Gallon and Cubic Feet registers are identified above by the letters USG and CF.
Meters w/ DIALOG modules, Dual & Single Switch modules and Contact Head registers will be shipped w/out lid.

Master Meter Product List
Effective July 1, 2004



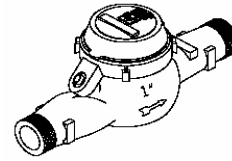
TOP LOAD COLD WATER MULTI-JET METERS

3/4" X 7-1/2" MJ BRONZE BODY WITH FROST PROTECTION

Size	Register	Part Number	
FLAT GLASS DIRECT READ			
3/4" (7-1/2")	Flat Glass USG Register w/Bronze Lid	MJ06-1AA-BAA-2	
3/4" (7-1/2")	Flat Glass CF Register w/Bronze Lid	MJ06-2AA-BAA-2	
DIALOG REGISTERS AND ELECTRONICS			
3/4" (7-1/2")	DIALOG USG Register w/Plastic Lid	MJ06-1BD-BAA-2	
3/4" (7-1/2")	DIALOG CF Register w/Plastic Lid	MJ06-2BD-BAA-2	
3/4" (7-1/2")	DIALOG USG Register w/Bronze Lid	MJ06-1BM-BAA-2	
3/4" (7-1/2")	DIALOG CF Register w/Bronze Lid	MJ06-2BM-BAA-2	
3/4" (7-1/2")	DIALOG USG Register w/DIALOG Module w/ReadPad	MJ06-1BU-BAA-2	
3/4" (7-1/2")	DIALOG CF Register w/DIALOG Module w/ReadPad	MJ06-2BU-BAA-2	
3/4" (7-1/2")	DIALOG USG Register w/Dual Switch Module	MJ06-1BN-BAA-2	
3/4" (7-1/2")	DIALOG CF Register w/Dual Switch Module	MJ06-2BN-BAA-2	
3/4" (7-1/2")	DIALOG USG Register w/Single Switch Module	MJ06-1BP-BAA-2	
3/4" (7-1/2")	DIALOG CF Register w/Single Switch Module	MJ06-2BP-BAA-2	
CONTACT HEAD REGISTERS			
3/4" (7-1/2")	Contact Head USG Register & Reed Switch Assembly 1 Gal. Pulse	MJ06-1CH-BAA-2	
3/4" (7-1/2")	Contact Head USG Register & Reed Switch Assembly 10 Gal. Pulse	MJ06-1CI-BAA-2	
3/4" (7-1/2")	Contact Head USG Register & Reed Switch Assembly 100 Gal. Pulse	MJ06-1CJ-BAA-2	
3/4" (7-1/2")	Contact Head USG Register w/Dual Electrical Output 1 Gal. Pulse	MJ06-1IH-BAA-2	
3/4" (7-1/2")	Contact Head USG Register w/Dual Electrical Output 10 Gal. Pulse	MJ06-1II-BAA-2	
3/4" (7-1/2")	Contact Head USG Register w/Dual Electrical Output 100 Gal. Pulse	MJ06-1IJ-BAA-2	
<i>Note: Contact head registers can be supplied in Cubic Feet. Contact Master Meter for proper part number.</i>			
RATE OF FLOW REGISTERS			
3/4" (7-1/2")	Rate of Flow Register	MJ06-1HA-BAA-2	
RECLAIM REGISTERS			
3/4" (7-1/2")	Reclaim Flat Glass USG Register w/Bronze Lid	MJ06-1DA-BAA-2	
3/4" (7-1/2")	Reclaim Flat Glass CF Register w/Bronze Lid	MJ06-2DA-BAA-2	
3/4" (7-1/2")	Reclaim DIALOG USG Register w/Plastic Lid	MJ06-1RD-BAA-2	
3/4" (7-1/2")	Reclaim DIALOG CF Register w/Plastic Lid	MJ06-2RD-BAA-2	
3/4" (7-1/2")	Reclaim DIALOG USG Register w/Bronze Lid	MJ06-1RM-BAA-2	
3/4" (7-1/2")	Reclaim DIALOG CF Register w/Bronze Lid	MJ06-2RM-BAA-2	
3/4" (7-1/2")	Reclaim DIALOG USG Register w/DIALOG Module w/ReadPad	MJ06-1RU-BAA-2	
3/4" (7-1/2")	Reclaim DIALOG CF Register w/DIALOG Module w/ReadPad	MJ06-2RU-BAA-2	
METER COUPLINGS			
3/4" (7-1/2")	3/4" Bronze Meter Coupling w/Gasket (Price per each coupling)	902 3/4 CPL	

Note: The US Gallon and Cubic Feet registers are identified above by the letters USG and CF.
Meters w/ DIALOG modules, Dual & Single Switch modules and Contact Head registers will be shipped w/out lid.

Master Meter Product List
Effective July 1, 2004

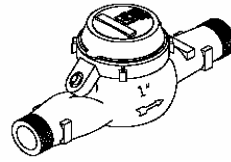


TOP LOAD COLD WATER MULTI-JET WATER METERS

1" MJ BRONZE BODY			
Size	Register	Part Number	
FLAT GLASS DIRECT READ			
1"	Flat Glass USG Register w/Bronze Lid	MJ09-1AA-AAA-2	
1"	Flat Glass CF Register w/Bronze Lid	MJ09-2AA-AAA-2	
DIALOG REGISTERS AND ELECTRONICS			
1"	DIALOG USG Register w/Plastic Lid	MJ09-1BD-AAA-2	
1"	DIALOG CF Register w/Plastic Lid	MJ09-2BD-AAA-2	
1"	DIALOG USG Register w/Bronze Lid	MJ09-1BM-AAA-2	
1"	DIALOG CF Register w/Bronze Lid	MJ09-2BM-AAA-2	
1"	DIALOG USG Register w/DIALOG Module w/ReadPad	MJ09-1BU-AAA-2	
1"	DIALOG CF Register w/DIALOG Module w/ReadPad	MJ09-2BU-AAA-2	
1"	DIALOG USG Register w/Dual Switch Module	MJ09-1BN-AAA-2	
1"	DIALOG CF Register w/Dual Switch Module	MJ09-2BN-AAA-2	
1"	DIALOG USG Register w/Single Switch Module	MJ09-1BP-AAA-2	
1"	DIALOG CF Register w/Single Switch Module	MJ09-2BP-AAA-2	
CONTACT HEAD REGISTERS			
1"	Contact Head USG Register & Reed Switch Assembly 1 Gal. Pulse	MJ09-1CH-AAA-2	
1"	Contact Head USG Register & Reed Switch Assembly 10 Gal. Pulse	MJ09-1CI-AAA-2	
1"	Contact Head USG Register & Reed Switch Assembly 100 Gal. Pulse	MJ09-1CJ-AAA-2	
1"	Contact Head USG Register w/Dual Electrical Output 1 Gal. Pulse	MJ09-1IH-AAA-2	
1"	Contact Head USG Register w/Dual Electrical Output 10 Gal. Pulse	MJ09-1II-AAA-2	
1"	Contact Head USG Register w/Dual Electrical Output 100 Gal. Pulse	MJ09-1IJ-AAA-2	
<i>Note: Contact head registers can be supplied in Cubic Feet. Contact Master Meter for proper part number.</i>			
RATE OF FLOW REGISTERS			
1"	Rate of Flow Register	MJ09-1HA-AAA-2	
RECLAIM REGISTERS			
1"	Reclaim Flat Glass USG Register w/Bronze Lid	MJ09-1DA-AAA-2	
1"	Reclaim Flat Glass CF Register w/Bronze Lid	MJ09-2DA-AAA-2	
1"	Reclaim DIALOG USG Register w/Plastic Lid	MJ09-1RD-AAA-2	
1"	Reclaim DIALOG CF Register w/Plastic Lid	MJ09-2RD-AAA-2	
1"	Reclaim DIALOG USG Register w/Bronze Lid	MJ09-1RM-AAA-2	
1"	Reclaim DIALOG CF Register w/Bronze Lid	MJ09-2RM-AAA-2	
1"	Reclaim DIALOG USG Register w/DIALOG Module w/ReadPad	MJ09-1RU-AAA-2	
1"	Reclaim DIALOG CF Register w/DIALOG Module w/ReadPad	MJ09-2RU-AAA-2	
METER COUPLINGS			
1"	1" Bronze Meter Coupling w/Gasket (Price per each coupling)	903 1 CPL	

Note: *The US Gallon and Cubic Feet registers are identified above by the letters USG and CF. Meters w/ DIALOG modules, Dual & Single Switch modules and Contact Head registers will be shipped w/out lid.*

Master Meter Product List
Effective July 1, 2004



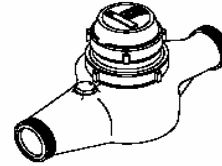
TOP LOAD COLD WATER MULTI-JET WATER METERS

1" MJ BRONZE BODY WITH FROST PROTECTION

Size	Register	Part Number	
FLAT GLASS DIRECT READ			
1"	Flat Glass USG Register w/Bronze Lid	MJ09-1AA-BAA-2	
1"	Flat Glass CF Register w/Bronze Lid	MJ09-2AA-BAA-2	
DIALOG REGISTERS AND ELECTRONICS			
1"	DIALOG USG Register w/Plastic Lid	MJ09-1BD-BAA-2	
1"	DIALOG CF Register w/Plastic Lid	MJ09-2BD-BAA-2	
1"	DIALOG USG Register w/Bronze Lid	MJ09-1BM-BAA-2	
1"	DIALOG CF Register w/Bronze Lid	MJ09-2BM-BAA-2	
1"	DIALOG USG Register w/DIALOG Module w/ReadPad	MJ09-1BU-BAA-2	
1"	DIALOG CF Register w/DIALOG Module w/ReadPad	MJ09-2BU-BAA-2	
1"	DIALOG USG Register w/Dual Switch Module	MJ09-1BN-BAA-2	
1"	DIALOG CF Register w/Dual Switch Module	MJ09-2BN-BAA-2	
1"	DIALOG USG Register w/Single Switch Module	MJ09-1BP-BAA-2	
1"	DIALOG CF Register w/Single Switch Module	MJ09-2BP-BAA-2	
CONTACT HEAD REGISTERS			
1"	Contact Head USG Register & Reed Switch Assembly 1 Gal. Pulse	MJ09-1CH-BAA-2	
1"	Contact Head USG Register & Reed Switch Assembly 10 Gal. Pulse	MJ09-1CI-BAA-2	
1"	Contact Head USG Register & Reed Switch Assembly 100 Gal. Pulse	MJ09-1CJ-BAA-2	
1"	Contact Head USG Register w/Dual Electrical Output 1 Gal. Pulse	MJ09-1IH-BAA-2	
1"	Contact Head USG Register w/Dual Electrical Output 10 Gal. Pulse	MJ09-1II-BAA-2	
1"	Contact Head USG Register w/Dual Electrical Output 100 Gal. Pulse	MJ09-1IJ-BAA-2	
<i>Note: Contact head registers can be supplied in Cubic Feet. Contact Master Meter for proper part number.</i>			
RATE OF FLOW REGISTERS			
1"	Rate of Flow Register	MJ09-1HA-BAA-2	
RECLAIM REGISTERS			
1"	Reclaim Flat Glass USG Register w/Bronze Lid	MJ09-1DA-BAA-2	
1"	Reclaim Flat Glass CF Register w/Bronze Lid	MJ09-2DA-BAA-2	
1"	Reclaim DIALOG USG Register w/Plastic Lid	MJ09-1RD-BAA-2	
1"	Reclaim DIALOG CF Register w/Plastic Lid	MJ09-2RD-BAA-2	
1"	Reclaim DIALOG USG Register w/Bronze Lid	MJ09-1RM-BAA-2	
1"	Reclaim DIALOG CF Register w/Bronze Lid	MJ09-2RM-BAA-2	
1"	Reclaim DIALOG USG Register w/DIALOG Module w/ReadPad	MJ09-1RU-BAA-2	
1"	Reclaim DIALOG CF Register w/DIALOG Module w/ReadPad	MJ09-2RU-BAA-2	
METER COUPLINGS			
1"	1" Bronze Meter Coupling w/Gasket (Price per each coupling)	903 1 CPL	

Note: *The US Gallon and Cubic Feet registers are identified above by the letters USG and CF. Meters w/ DIALOG modules, Dual & Single Switch modules and Contact Head registers will be shipped w/out lid.*

Master Meter Product List
Effective July 1, 2004

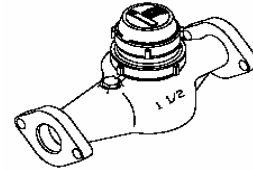


TOP LOAD COLD WATER MULTI-JET WATER METERS

1-1/2" MJ THREADED BRONZE BODY			
Size	Register	Part Number	
FLAT GLASS DIRECT READ			
1-1/2" Thd.	Flat Glass USG Register w/Bronze Lid	MJ10-1AA-AAA-2	
1-1/2" Thd.	Flat Glass CF Register w/Bronze Lid	MJ10-2AA-AAA-2	
DIALOG REGISTERS AND ELECTRONICS			
1-1/2" Thd.	DIALOG USG Register w/Plastic Lid	MJ10-1BD-AAA-2	
1-1/2" Thd.	DIALOG CF Register w/Plastic Lid	MJ10-2BD-AAA-2	
1-1/2" Thd.	DIALOG USG Register w/Bronze Lid	MJ10-1BM-AAA-2	
1-1/2" Thd.	DIALOG CF Register w/Bronze Lid	MJ10-2BM-AAA-2	
1-1/2" Thd.	DIALOG USG Register w/DIALOG Module w/ReadPad	MJ10-1BU-AAA-2	
1-1/2" Thd.	DIALOG CF Register w/DIALOG Module w/ReadPad	MJ10-2BU-AAA-2	
1-1/2" Thd.	DIALOG USG Register w/Dual Switch Module	MJ10-1BN-AAA-2	
1-1/2" Thd.	DIALOG CF Register w/Dual Switch Module	MJ10-2BN-AAA-2	
1-1/2" Thd.	DIALOG USG Register w/Single Switch Module	MJ10-1BP-AAA-2	
1-1/2" Thd.	DIALOG CF Register w/Single Switch Module	MJ10-2BP-AAA-2	
CONTACT HEAD REGISTERS			
1-1/2" Thd.	Contact Head USG Register & Reed Switch Assembly 1 Gal. Pulse	MJ10-1CH-AAA-2	
1-1/2" Thd.	Contact Head USG Register & Reed Switch Assembly 10 Gal. Pulse	MJ10-1CI-AAA-2	
1-1/2" Thd.	Contact Head USG Register & Reed Switch Assembly 100 Gal. Pulse	MJ10-1CJ-AAA-2	
1-1/2" Thd.	Contact Head USG Register w/Dual Electrical Output 1 Gal. Pulse	MJ10-1IH-AAA-2	
1-1/2" Thd.	Contact Head USG Register w/Dual Electrical Output 10 Gal. Pulse	MJ10-1II-AAA-2	
1-1/2" Thd.	Contact Head USG Register w/Dual Electrical Output 100 Gal. Pulse	MJ10-1IJ-AAA-2	
<i>Note: Contact head registers can be supplied in Cubic Feet. Contact Master Meter for proper part number.</i>			
RATE OF FLOW REGISTERS			
1-1/2" Thd.	Rate of Flow Register	MJ10-1HA-AAA-2	
RECLAIM REGISTERS			
1-1/2" Thd.	Reclaim Flat Glass USG Register w/Bronze Lid	MJ10-1DA-AAA-2	
1-1/2" Thd.	Reclaim Flat Glass CF Register w/Bronze Lid	MJ10-2DA-AAA-2	
1-1/2" Thd.	Reclaim DIALOG USG Register w/Plastic Lid	MJ10-1RD-AAA-2	
1-1/2" Thd.	Reclaim DIALOG CF Register w/Plastic Lid	MJ10-2RD-AAA-2	
1-1/2" Thd.	Reclaim DIALOG USG Register w/Bronze Lid	MJ10-1RM-AAA-2	
1-1/2" Thd.	Reclaim DIALOG CF Register w/Bronze Lid	MJ10-2RM-AAA-2	
1-1/2" Thd.	Reclaim DIALOG USG Register w/DIALOG Module w/ReadPad	MJ10-1RU-AAA-2	
1-1/2" Thd.	Reclaim DIALOG CF Register w/DIALOG Module w/ReadPad	MJ10-2RU-AAA-2	
METER COUPLINGS			
1-1/2"	1-1/2" Bronze Meter Coupling w/Gasket (Price per each)	904 1.5 CPL	

Note: The US Gallon and Cubic Feet registers are identified above by the letters USG and CF.
Meters w/ DIALOG modules, Dual & Single Switch modules and Contact Head registers will be shipped w/out lid.

Master Meter Product List
Effective July 1, 2004

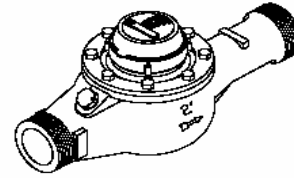


TOP LOAD COLD WATER MULTI-JET WATER METERS

1-1/2" MJ FLANGED BRONZE BODY			
Size	Register	Part Number	
FLAT GLASS DIRECT READ			
1-1/2" Flg.	Flat Glass USG Register w/Bronze Lid	MJ11-1AA-AAA-2	
1-1/2" Flg.	Flat Glass CF Register w/Bronze Lid	MJ11-2AA-AAA-2	
DIALOG REGISTERS AND ELECTRONICS			
1-1/2" Flg.	DIALOG USG Register w/Plastic Lid	MJ11-1BD-AAA-2	
1-1/2" Flg.	DIALOG CF Register w/Plastic Lid	MJ11-2BD-AAA-2	
1-1/2" Flg.	DIALOG USG Register w/Bronze Lid	MJ11-1BM-AAA-2	
1-1/2" Flg.	DIALOG CF Register w/Bronze Lid	MJ11-2BM-AAA-2	
1-1/2" Flg.	DIALOG USG Register w/DIALOG Module w/ReadPad	MJ11-1BU-AAA-2	
1-1/2" Flg.	DIALOG CF Register w/DIALOG Module w/ReadPad	MJ11-2BU-AAA-2	
1-1/2" Flg.	DIALOG USG Register w/Dual Switch Module	MJ11-1BN-AAA-2	
1-1/2" Flg.	DIALOG CF Register w/Dual Switch Module	MJ11-2BN-AAA-2	
1-1/2" Flg.	DIALOG USG Register w/Single Switch Module	MJ11-1BP-AAA-2	
1-1/2" Flg.	DIALOG CF Register w/Single Switch Module	MJ11-2BP-AAA-2	
CONTACT HEAD REGISTERS			
1-1/2" Flg.	Contact Head USG Register & Reed Switch Assembly 1 Gal. Pulse	MJ11-1CH-AAA-2	
1-1/2" Flg.	Contact Head USG Register & Reed Switch Assembly 10 Gal. Pulse	MJ11-1CI-AAA-2	
1-1/2" Flg.	Contact Head USG Register & Reed Switch Assembly 100 Gal. Pulse	MJ11-1CJ-AAA-2	
1-1/2" Flg.	Contact Head USG Register w/Dual Electrical Output 1 Gal. Pulse	MJ11-1IH-AAA-2	
1-1/2" Flg.	Contact Head USG Register w/Dual Electrical Output 10 Gal. Pulse	MJ11-1II-AAA-2	
1-1/2" Flg.	Contact Head USG Register w/Dual Electrical Output 100 Gal. Pulse	MJ11-1IJ-AAA-2	
<i>Note: Contact head registers can be supplied in Cubic Feet. Contact Master Meter for proper part number.</i>			
RATE OF FLOW REGISTERS			
1-1/2" Flg.	Rate of Flow Register	MJ11-1HA-AAA-2	
RECLAIM REGISTERS			
1-1/2" Flg.	Reclaim Flat Glass USG Register w/Bronze Lid	MJ11-1DA-AAA-2	
1-1/2" Flg.	Reclaim Flat Glass CF Register w/Bronze Lid	MJ11-2DA-AAA-2	
1-1/2" Flg.	Reclaim DIALOG USG Register w/Plastic Lid	MJ11-1RD-AAA-2	
1-1/2" Flg.	Reclaim DIALOG CF Register w/Plastic Lid	MJ11-2RD-AAA-2	
1-1/2" Flg.	Reclaim DIALOG USG Register w/Bronze Lid	MJ11-1RM-AAA-2	
1-1/2" Flg.	Reclaim DIALOG CF Register w/Bronze Lid	MJ11-2RM-AAA-2	
1-1/2" Flg.	Reclaim DIALOG USG Register w/DIALOG Module w/ReadPad	MJ11-1RU-AAA-2	
1-1/2" Flg.	Reclaim DIALOG CF Register w/DIALOG Module w/ReadPad	MJ11-2RU-AAA-2	
OVAL METER FLANGES PER PAIR			
1-1/2"	Oval Bronze Meter Flanges w/Gasket & Bolts (Price per pair)	FLG-1.5 OBR	
1-1/2"	Oval Cast Iron Meter Flanges w/Gasket & Bolts (Price per pair)	FLG-1.5 OCI	

Note: *The US Gallon and Cubic Feet registers are identified above by the letters USG and CF. Meters w/ DIALOG modules, Dual & Single Switch modules and Contact Head registers will be shipped w/out lid.*

Master Meter Product List
Effective July 1, 2004

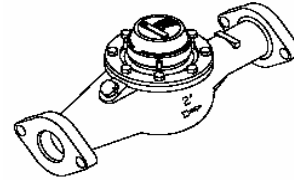


TOP LOAD COLD WATER MULTI-JET WATER METERS

2" MJ THREADED BRONZE BODY			
Size	Register	Part Number	
FLAT GLASS DIRECT READ			
2" Thd.	Flat Glass USG Register w/Bronze Lid	MJ12-1AA-AAA-2	
2" Thd.	Flat Glass CF Register w/Bronze Lid	MJ12-2AA-AAA-2	
DIALOG REGISTERS AND ELECTRONICS			
2" Thd.	DIALOG USG Register w/Plastic Lid	MJ12-1BD-AAA-2	
2" Thd.	DIALOG CF Register w/Plastic Lid	MJ12-2BD-AAA-2	
2" Thd.	DIALOG USG Register w/Bronze Lid	MJ12-1BM-AAA-2	
2" Thd.	DIALOG CF Register w/Bronze Lid	MJ12-2BM-AAA-2	
2" Thd.	DIALOG USG Register w/DIALOG Module w/ReadPad	MJ12-1BU-AAA-2	
2" Thd.	DIALOG CF Register w/DIALOG Module w/ReadPad	MJ12-2BU-AAA-2	
2" Thd.	DIALOG USG Register w/Dual Switch Module	MJ12-1BN-AAA-2	
2" Thd.	DIALOG CF Register w/Dual Switch Module	MJ12-2BN-AAA-2	
2" Thd.	DIALOG USG Register w/Single Switch Module	MJ12-1BP-AAA-2	
2" Thd.	DIALOG CF Register w/Single Switch Module	MJ12-2BP-AAA-2	
CONTACT HEAD REGISTERS			
2" Thd.	Contact Head USG Register & Reed Switch Assembly 1 Gal. Pulse	MJ12-1CH-AAA-2	
2" Thd.	Contact Head USG Register & Reed Switch Assembly 10 Gal. Pulse	MJ12-1CI-AAA-2	
2" Thd.	Contact Head USG Register & Reed Switch Assembly 100 Gal. Pulse	MJ12-1CJ-AAA-2	
2" Thd.	Contact Head USG Register w/Dual Electrical Output 1 Gal. Pulse	MJ12-1IH-AAA-2	
2" Thd.	Contact Head USG Register w/Dual Electrical Output 10 Gal. Pulse	MJ12-1II-AAA-2	
2" Thd.	Contact Head USG Register w/Dual Electrical Output 100 Gal. Pulse	MJ12-1IJ-AAA-2	
<i>Note: Contact head registers can be supplied in Cubic Feet. Contact Master Meter for proper part number.</i>			
RATE OF FLOW REGISTERS			
2" Thd.	Rate of Flow Register	MJ12-1HA-AAA-2	
RECLAIM REGISTERS			
2" Thd.	Reclaim Flat Glass USG Register w/Bronze Lid	MJ12-1DA-AAA-2	
2" Thd.	Reclaim Flat Glass CF Register w/Bronze Lid	MJ12-2DA-AAA-2	
2" Thd.	Reclaim DIALOG USG Register w/Plastic Lid	MJ12-1RD-AAA-2	
2" Thd.	Reclaim DIALOG CF Register w/Plastic Lid	MJ12-2RD-AAA-2	
2" Thd.	Reclaim DIALOG USG Register w/Bronze Lid	MJ12-1RM-AAA-2	
2" Thd.	Reclaim DIALOG CF Register w/Bronze Lid	MJ12-2RM-AAA-2	
2" Thd.	Reclaim DIALOG USG Register w/DIALOG Module w/ReadPad	MJ12-1RU-AAA-2	
2" Thd.	Reclaim DIALOG CF Register w/DIALOG Module w/ReadPad	MJ12-2RU-AAA-2	
METER COUPLINGS			
2"	2" Bronze Meter Coupling w/Gasket (Price per each)	905 2 CPL	

Note: The US Gallon and Cubic Feet registers are identified above by the letters USG and CF.
Meters w/ DIALOG modules, Dual & Single Switch modules and Contact Head registers will be shipped w/out lid.

Master Meter Product List
Effective July 1, 2004

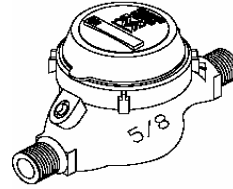


TOP LOAD COLD WATER MULTI-JET WATER METERS

2" MJ FLANGED BRONZE BODY			
Size	Register	Part Number	
FLAT GLASS DIRECT READ			
2" Flg.	Flat Glass USG Register w/Bronze Lid	MJ13-1AA-AAA-2	
2" Flg.	Flat Glass CF Register w/Bronze Lid	MJ13-2AA-AAA-2	
DIALOG REGISTERS AND ELECTRONICS			
2" Flg.	DIALOG USG Register w/Plastic Lid	MJ13-1BD-AAA-2	
2" Flg.	DIALOG CF Register w/Plastic Lid	MJ13-2BD-AAA-2	
2" Flg.	DIALOG USG Register w/Bronze Lid	MJ13-1BM-AAA-2	
2" Flg.	DIALOG CF Register w/Bronze Lid	MJ13-2BM-AAA-2	
2" Flg.	DIALOG USG Register w/DIALOG Module w/ReadPad	MJ13-1BU-AAA-2	
2" Flg.	DIALOG CF Register w/DIALOG Module w/ReadPad	MJ13-2BU-AAA-2	
2" Flg.	DIALOG USG Register w/Dual Switch Module	MJ13-1BN-AAA-2	
2" Flg.	DIALOG CF Register w/Dual Switch Module	MJ13-2BN-AAA-2	
2" Flg.	DIALOG USG Register w/Single Switch Module	MJ13-1BP-AAA-2	
2" Flg.	DIALOG CF Register w/Single Switch Module	MJ13-2BP-AAA-2	
CONTACT HEAD REGISTERS			
2" Flg.	Contact Head USG Register & Reed Switch Assembly 1 Gal. Pulse	MJ13-1CH-AAA-2	
2" Flg.	Contact Head USG Register & Reed Switch Assembly 10 Gal. Pulse	MJ13-1CI-AAA-2	
2" Flg.	Contact Head USG Register & Reed Switch Assembly 100 Gal. Pulse	MJ13-1CJ-AAA-2	
2" Flg.	Contact Head USG Register w/Dual Electrical Output 1 Gal. Pulse	MJ13-1IH-AAA-2	
2" Flg.	Contact Head USG Register w/Dual Electrical Output 10 Gal. Pulse	MJ13-1II-AAA-2	
2" Flg.	Contact Head USG Register w/Dual Electrical Output 100 Gal. Pulse	MJ13-1IJ-AAA-2	
<i>Note: Contact head registers can be supplied in Cubic Feet. Contact Master Meter for proper part number.</i>			
RATE OF FLOW REGISTERS			
2" Flg.	Rate of Flow Register	MJ13-1HA-AAA-2	
RECLAIM REGISTERS			
2" Flg.	Reclaim Flat Glass USG Register w/Bronze Lid	MJ13-1DA-AAA-2	
2" Flg.	Reclaim Flat Glass CF Register w/Bronze Lid	MJ13-2DA-AAA-2	
2" Flg.	Reclaim DIALOG USG Register w/Plastic Lid	MJ13-1RD-AAA-2	
2" Flg.	Reclaim DIALOG CF Register w/Plastic Lid	MJ13-2RD-AAA-2	
2" Flg.	Reclaim DIALOG USG Register w/Bronze Lid	MJ13-1RM-AAA-2	
2" Flg.	Reclaim DIALOG CF Register w/Bronze Lid	MJ13-2RM-AAA-2	
2" Flg.	Reclaim DIALOG USG Register w/DIALOG Module w/ReadPad	MJ13-1RU-AAA-2	
2" Flg.	Reclaim DIALOG CF Register w/DIALOG Module w/ReadPad	MJ13-2RU-AAA-2	
OVAL METER FLANGES PER PAIR			
2"	Oval Bronze Meter Flanges w/Gasket & Bolts (Price per pair)	FLG-2 OBR	
2"	Oval Cast Iron Meter Flanges w/Gasket & Bolts (Price per pair)	FLG-2 OCI	

Note: The US Gallon and Cubic Feet registers are identified above by the letters USG and CF.
Meters w/ DIALOG modules, Dual & Single Switch modules and Contact Head registers will be shipped w/out lid.

Master Meter Product List
Effective July 1, 2004

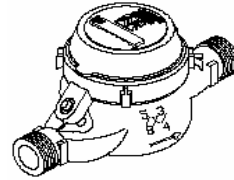


TOP LOAD COLD WATER MULTI-JET METERS

5/8" MJ ENVIROBRASS BODY			
Size	Register	Part Number	
FLAT GLASS DIRECT READ			
5/8"	Flat Glass USG Big Dial Register w/Bronze Lid	MJ04-5AA-NAA-2	
5/8"	Flat Glass CF Big Dial Register w/Bronze Lid	MJ04-6AA-NAA-2	
DIALOG REGISTERS AND ELECTRONICS			
5/8"	DIALOG USG Register w/Plastic Lid	MJ04-1BD-NAA-2	
5/8"	DIALOG CF Register w/Plastic Lid	MJ04-2BD-NAA-2	
5/8"	DIALOG USG Register w/Bronze Lid	MJ04-1BM-NAA-2	
5/8"	DIALOG CF Register w/Bronze Lid	MJ04-2BM-NAA-2	
5/8"	DIALOG USG Register w/DIALOG Module w/ReadPad	MJ04-1BU-NAA-2	
5/8"	DIALOG CF Register w/DIALOG Module w/ReadPad	MJ04-2BU-NAA-2	
5/8"	DIALOG USG Register w/Dual Switch Module	MJ04-1BN-NAA-2	
5/8"	DIALOG CF Register w/Dual Switch Module	MJ04-2BN-NAA-2	
5/8"	DIALOG USG Register w/Single Switch Module	MJ04-1BP-NAA-2	
5/8"	DIALOG CF Register w/Single Switch Module	MJ04-2BP-NAA-2	
CONTACT HEAD REGISTERS			
5/8"	Contact Head USG Register & Reed Switch Assembly 1/10 Gal. Pulse	MJ04-1CG-NAA-2	
5/8"	Contact Head USG Register & Reed Switch Assembly 1 Gal. Pulse	MJ04-1CH-NAA-2	
5/8"	Contact Head USG Register & Reed Switch Assembly 10 Gal. Pulse	MJ04-1CI-NAA-2	
5/8"	Contact Head USG Register w/Dual Electrical Output 1/10 Gal. Pulse	MJ04-1IG-NAA-2	
5/8"	Contact Head USG Register w/Dual Electrical Output 1 Gal. Pulse	MJ04-1IH-NAA-2	
5/8"	Contact Head USG Register w/Dual Electrical Output 10 Gal. Pulse	MJ04-1II-NAA-2	
<i>Note: Contact head registers can be supplied in Cubic Feet. Contact Master Meter for proper part number.</i>			
RATE OF FLOW REGISTERS			
5/8"	Rate of Flow Register	MJ04-1HA-NAA-2	
RECLAIM REGISTERS			
5/8"	Reclaim Flat Glass USG Register w/Bronze Lid	MJ04-1DA-NAA-2	
5/8"	Reclaim Flat Glass CF Register w/Bronze Lid	MJ04-2DA-NAA-2	
5/8"	Reclaim DIALOG USG Register w/Plastic Lid	MJ04-1RD-NAA-2	
5/8"	Reclaim DIALOG CF Register w/Plastic Lid	MJ04-2RD-NAA-2	
5/8"	Reclaim DIALOG USG Register w/Bronze Lid	MJ04-1RM-NAA-2	
5/8"	Reclaim DIALOG CF Register w/Bronze Lid	MJ04-2RM-NAA-2	
5/8"	Reclaim DIALOG USG Register w/DIALOG Module w/ReadPad	MJ04-1RU-NAA-2	
5/8"	Reclaim DIALOG CF Register w/DIALOG Module w/ReadPad	MJ04-2RU-NAA-2	
METER COUPLINGS			
5/8"	1/2" Bronze Meter Coupling w/Gasket (Price per each coupling)	901 1/2 CPL	

Note: *The US Gallon and Cubic Feet registers are identified above by the letters USG and CF.
Meters w/ DIALOG modules, Dual & Single Switch modules and Contact Head registers will be shipped w/out lid.*

Master Meter Product List
Effective July 1, 2004

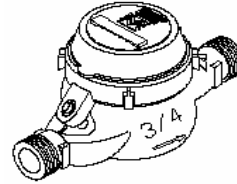


TOP LOAD COLD WATER MULTI-JET METERS

5/8" X 3/4" MJ ENVIROBRASS BODY			
Size	Register	Part Number	
FLAT GLASS DIRECT READ			
5/8" X 3/4"	Flat Glass USG Big Dial Register w/Bronze Lid	MJ05-5AA-NAA-2	
5/8" X 3/4"	Flat Glass CF Big Dial Register w/Bronze Lid	MJ05-6AA-NAA-2	
DIALOG REGISTERS AND ELECTRONICS			
5/8" X 3/4"	DIALOG USG Register w/Plastic Lid	MJ05-1BD-NAA-2	
5/8" X 3/4"	DIALOG CF Register w/Plastic Lid	MJ05-2BD-NAA-2	
5/8" X 3/4"	DIALOG USG Register w/Bronze Lid	MJ05-1BM-NAA-2	
5/8" X 3/4"	DIALOG CF Register w/Bronze Lid	MJ05-2BM-NAA-2	
5/8" X 3/4"	DIALOG USG Register w/DIALOG Module w/ReadPad	MJ05-1BU-NAA-2	
5/8" X 3/4"	DIALOG CF Register w/DIALOG Module w/ReadPad	MJ05-2BU-NAA-2	
5/8" X 3/4"	DIALOG USG Register w/Dual Switch Module	MJ05-1BN-NAA-2	
5/8" X 3/4"	DIALOG CF Register w/Dual Switch Module	MJ05-2BN-NAA-2	
5/8" X 3/4"	DIALOG USG Register w/Single Switch Module	MJ05-1BP-NAA-2	
5/8" X 3/4"	DIALOG CF Register w/Single Switch Module	MJ05-2BP-NAA-2	
CONTACT HEAD REGISTERS			
5/8" X 3/4"	Contact Head USG Register & Reed Switch Assembly 1/10 Gal. Pulse	MJ05-1CG-NAA-2	
5/8" X 3/4"	Contact Head USG Register & Reed Switch Assembly 1 Gal. Pulse	MJ05-1CH-NAA-2	
5/8" X 3/4"	Contact Head USG Register & Reed Switch Assembly 10 Gal. Pulse	MJ05-1CI-NAA-2	
5/8" X 3/4"	Contact Head USG Register w/Dual Electrical Output 1/10 Gal. Pulse	MJ05-1IG-NAA-2	
5/8" X 3/4"	Contact Head USG Register w/Dual Electrical Output 1 Gal. Pulse	MJ05-1IH-NAA-2	
5/8" X 3/4"	Contact Head USG Register w/Dual Electrical Output 10 Gal. Pulse	MJ05-1II-NAA-2	
<i>Note: Contact head registers can be supplied in Cubic Feet. Contact Master Meter for proper part number.</i>			
RATE OF FLOW REGISTERS			
5/8" X 3/4"	Rate of Flow Register	MJ05-1HA-NAA-2	
RECLAIM REGISTERS			
5/8" X 3/4"	Reclaim Flat Glass USG Register w/Bronze Lid	MJ05-1DA-NAA-2	
5/8" X 3/4"	Reclaim Flat Glass CF Register w/Bronze Lid	MJ05-2DA-NAA-2	
5/8" X 3/4"	Reclaim DIALOG USG Register w/Plastic Lid	MJ05-1RD-NAA-2	
5/8" X 3/4"	Reclaim DIALOG CF Register w/Plastic Lid	MJ05-2RD-NAA-2	
5/8" X 3/4"	Reclaim DIALOG USG Register w/Bronze Lid	MJ05-1RM-NAA-2	
5/8" X 3/4"	Reclaim DIALOG CF Register w/Bronze Lid	MJ05-2RM-NAA-2	
5/8" X 3/4"	Reclaim DIALOG USG Register w/DIALOG Module w/ReadPad	MJ05-1RU-NAA-2	
5/8" X 3/4"	Reclaim DIALOG CF Register w/DIALOG Module w/ReadPad	MJ05-2RU-NAA-2	
METER COUPLINGS			
5/8" X 3/4"	3/4" Bronze Meter Coupling w/Gasket (Price per each coupling)	902 3/4 CPL	

Note: *The US Gallon and Cubic Feet registers are identified above by the letters USG and CF.
Meters w/ DIALOG modules, Dual & Single Switch modules and Contact Head registers will be shipped w/out lid.*

Master Meter Product List
Effective July 1, 2004

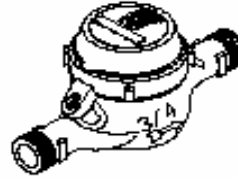


TOP LOAD COLD WATER MULTI-JET METERS

3/4" X 7-1/2" MJ ENVIROBRASS BODY			
Size	Register	Part Number	
FLAT GLASS DIRECT READ			
3/4" (7-1/2")	Flat Glass USG Register w/Bronze Lid	MJ06-1AA-NAA-2	
3/4" (7-1/2")	Flat Glass CF Register w/Bronze Lid	MJ06-2AA-NAA-2	
DIALOG REGISTERS AND ELECTRONICS			
3/4" (7-1/2")	DIALOG USG Register w/Plastic Lid	MJ06-1BD-NAA-2	
3/4" (7-1/2")	DIALOG CF Register w/Plastic Lid	MJ06-2BD-NAA-2	
3/4" (7-1/2")	DIALOG USG Register w/Bronze Lid	MJ06-1BM-NAA-2	
3/4" (7-1/2")	DIALOG CF Register w/Bronze Lid	MJ06-2BM-NAA-2	
3/4" (7-1/2")	DIALOG USG Register w/DIALOG Module w/ReadPad	MJ06-1BU-NAA-2	
3/4" (7-1/2")	DIALOG CF Register w/DIALOG Module w/ReadPad	MJ06-2BU-NAA-2	
3/4" (7-1/2")	DIALOG USG Register w/Dual Switch Module	MJ06-1BN-NAA-2	
3/4" (7-1/2")	DIALOG CF Register w/Dual Switch Module	MJ06-2BN-NAA-2	
3/4" (7-1/2")	DIALOG USG Register w/Single Switch Module	MJ06-1BP-NAA-2	
3/4" (7-1/2")	DIALOG CF Register w/Single Switch Module	MJ06-2BP-NAA-2	
CONTACT HEAD REGISTERS			
3/4" (7-1/2")	Contact Head USG Register & Reed Switch Assembly 1 Gal. Pulse	MJ06-1CH-NAA-2	
3/4" (7-1/2")	Contact Head USG Register & Reed Switch Assembly 10 Gal. Pulse	MJ06-1CI-NAA-2	
3/4" (7-1/2")	Contact Head USG Register & Reed Switch Assembly 100 Gal. Pulse	MJ06-1CJ-NAA-2	
3/4" (7-1/2")	Contact Head USG Register w/Dual Electrical Output 1 Gal. Pulse	MJ06-1IH-NAA-2	
3/4" (7-1/2")	Contact Head USG Register w/Dual Electrical Output 10 Gal. Pulse	MJ06-1II-NAA-2	
3/4" (7-1/2")	Contact Head USG Register w/Dual Electrical Output 100 Gal. Pulse	MJ06-1IJ-NAA-2	
<i>Note: Contact head registers can be supplied in Cubic Feet. Contact Master Meter for proper part number.</i>			
RATE OF FLOW REGISTERS			
3/4" (7-1/2")	Rate of Flow Register	MJ06-1HA-NAA-2	
RECLAIM REGISTERS			
3/4" (7-1/2")	Reclaim Flat Glass USG Register w/Bronze Lid	MJ06-1DA-NAA-2	
3/4" (7-1/2")	Reclaim Flat Glass CF Register w/Bronze Lid	MJ06-2DA-NAA-2	
3/4" (7-1/2")	Reclaim DIALOG USG Register w/Plastic Lid	MJ06-1RD-NAA-2	
3/4" (7-1/2")	Reclaim DIALOG CF Register w/Plastic Lid	MJ06-2RD-NAA-2	
3/4" (7-1/2")	Reclaim DIALOG USG Register w/Bronze Lid	MJ06-1RM-NAA-2	
3/4" (7-1/2")	Reclaim DIALOG CF Register w/Bronze Lid	MJ06-2RM-NAA-2	
3/4" (7-1/2")	Reclaim DIALOG USG Register w/DIALOG Module w/ReadPad	MJ06-1RU-NAA-2	
3/4" (7-1/2")	Reclaim DIALOG CF Register w/DIALOG Module w/ReadPad	MJ06-2RU-NAA-2	
METER COUPLINGS			
3/4" (7-1/2")	3/4" Bronze Meter Coupling w/Gasket (Price per each coupling)	902 3/4 CPL	

Note: The US Gallon and Cubic Feet registers are identified above by the letters USG and CF.
Meters w/ DIALOG modules, Dual & Single Switch modules and Contact Head registers will be shipped w/out lid.

Master Meter Product List
Effective July 1, 2004

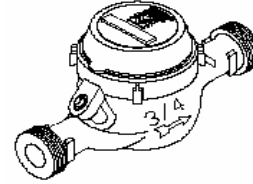


TOP LOAD COLD WATER MULTI-JET WATER METERS

3/4" X 9" MJ ENVIROBRASS BODY			
Size	Register	Part Number	
FLAT GLASS DIRECT READ			
3/4" (9")	Flat Glass USG Register w/Bronze Lid	MJ07-1AA-NAA-2	
3/4" (9")	Flat Glass CF Register w/Bronze Lid	MJ07-2AA-NAA-2	
DIALOG REGISTERS AND ELECTRONICS			
3/4" (9")	DIALOG USG Register w/Plastic Lid	MJ07-1BD-NAA-2	
3/4" (9")	DIALOG CF Register w/Plastic Lid	MJ07-2BD-NAA-2	
3/4" (9")	DIALOG USG Register w/Bronze Lid	MJ07-1BM-NAA-2	
3/4" (9")	DIALOG CF Register w/Bronze Lid	MJ07-2BM-NAA-2	
3/4" (9")	DIALOG USG Register w/DIALOG Module w/ReadPad	MJ07-1BU-NAA-2	
3/4" (9")	DIALOG CF Register w/DIALOG Module w/ReadPad	MJ07-2BU-NAA-2	
3/4" (9")	DIALOG USG Register w/Dual Switch Module	MJ07-1BN-NAA-2	
3/4" (9")	DIALOG CF Register w/Dual Switch Module	MJ07-2BN-NAA-2	
3/4" (9")	DIALOG USG Register w/Single Switch Module	MJ07-1BP-NAA-2	
3/4" (9")	DIALOG CF Register w/Single Switch Module	MJ07-2BP-NAA-2	
CONTACT HEAD REGISTERS			
3/4" (9")	Contact Head USG Register & Reed Switch Assembly 1 Gal. Pulse	MJ07-1CH-NAA-2	
3/4" (9")	Contact Head USG Register & Reed Switch Assembly 10 Gal. Pulse	MJ07-1CI-NAA-2	
3/4" (9")	Contact Head USG Register & Reed Switch Assembly 100 Gal. Pulse	MJ07-1CJ-NAA-2	
3/4" (9")	Contact Head USG Register w/Dual Electrical Output 1 Gal. Pulse	MJ07-1IH-NAA-2	
3/4" (9")	Contact Head USG Register w/Dual Electrical Output 10 Gal. Pulse	MJ07-1II-NAA-2	
3/4" (9")	Contact Head USG Register w/Dual Electrical Output 100 Gal. Pulse	MJ07-1IJ-NAA-2	
<i>Note: Contact head registers can be supplied in Cubic Feet. Contact Master Meter for proper part number.</i>			
RATE OF FLOW REGISTERS			
3/4" (9")	Rate of Flow Register	MJ07-1HA-NAA-2	
RECLAIM REGISTERS			
3/4" (9")	Reclaim Flat Glass USG Register w/Bronze Lid	MJ07-1DA-NAA-2	
3/4" (9")	Reclaim Flat Glass CF Register w/Bronze Lid	MJ07-2DA-NAA-2	
3/4" (9")	Reclaim DIALOG USG Register w/Plastic Lid	MJ07-1RD-NAA-2	
3/4" (9")	Reclaim DIALOG CF Register w/Plastic Lid	MJ07-2RD-NAA-2	
3/4" (9")	Reclaim DIALOG USG Register w/Bronze Lid	MJ07-1RM-NAA-2	
3/4" (9")	Reclaim DIALOG CF Register w/Bronze Lid	MJ07-2RM-NAA-2	
3/4" (9")	Reclaim DIALOG USG Register w/DIALOG Module w/ReadPad	MJ07-1RU-NAA-2	
3/4" (9")	Reclaim DIALOG CF Register w/DIALOG Module w/ReadPad	MJ74-2RU-NAA-2	
METER COUPLINGS			
3/4" (9")	3/4" Bronze Meter Coupling w/Gasket (Price per each coupling)	902 3/4 CPL	

Note: *The US Gallon and Cubic Feet registers are identified above by the letters USG and CF. Meters w/ DIALOG modules, Dual & Single Switch modules and Contact Head registers will be shipped w/out lid.*

Master Meter Product List
Effective July 1, 2004

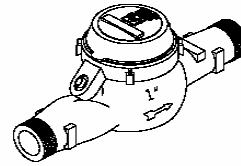


TOP LOAD COLD WATER MULTI-JET WATER METERS

3/4" X 9" X 1" MJ ENVIROBRASS BODY			
Size	Register	Part Number	
FLAT GLASS DIRECT READ			
3/4" X 9" X 1"	Flat Glass USG Register w/Bronze Lid	MJ08-1AA-NAA-2	
3/4" X 9" X 1"	Flat Glass CF Register w/Bronze Lid	MJ08-2AA-NAA-2	
DIALOG REGISTERS AND ELECTRONICS			
3/4" X 9" X 1"	DIALOG USG Register w/Plastic Lid	MJ08-1BD-NAA-2	
3/4" X 9" X 1"	DIALOG CF Register w/Plastic Lid	MJ08-2BD-NAA-2	
3/4" X 9" X 1"	DIALOG USG Register w/Bronze Lid	MJ08-1BM-NAA-2	
3/4" X 9" X 1"	DIALOG CF Register w/Bronze Lid	MJ08-2BM-NAA-2	
3/4" X 9" X 1"	DIALOG USG Register w/DIALOG Module w/ReadPad	MJ08-1BU-NAA-2	
3/4" X 9" X 1"	DIALOG CF Register w/DIALOG Module w/ReadPad	MJ08-2BU-NAA-2	
3/4" X 9" X 1"	DIALOG USG Register w/Dual Switch Module	MJ08-1BN-NAA-2	
3/4" X 9" X 1"	DIALOG CF Register w/Dual Switch Module	MJ08-2BN-NAA-2	
3/4" X 9" X 1"	DIALOG USG Register w/Single Switch Module	MJ08-1BP-NAA-2	
3/4" X 9" X 1"	DIALOG CF Register w/Single Switch Module	MJ08-2BP-NAA-2	
CONTACT HEAD REGISTERS			
3/4" X 9" X 1"	Contact Head USG Register & Reed Switch Assembly 1 Gal. Pulse	MJ08-1CH-NAA-2	
3/4" X 9" X 1"	Contact Head USG Register & Reed Switch Assembly 1 Gal. Pulse	MJ08-1CI-NAA-2	
3/4" X 9" X 1"	Contact Head USG Register & Reed Switch Assembly 10 Gal. Pulse	MJ08-1CJ-NAA-2	
3/4" X 9" X 1"	Contact Head USG Register w/Dual Electrical Output 1/10 Gal. Pulse	MJ08-1IH-NAA-2	
3/4" X 9" X 1"	Contact Head USG Register w/Dual Electrical Output 1 Gal. Pulse	MJ08-1II-NAA-2	
3/4" X 9" X 1"	Contact Head USG Register w/Dual Electrical Output 10 Gal. Pulse	MJ08-1IJ-NAA-2	
<i>Note: Contact head registers can be supplied in Cubic Feet. Contact Master Meter for proper part number.</i>			
RATE OF FLOW REGISTERS			
3/4" X 9" X 1"	Rate of Flow Register	MJ08-1HA-NAA-2	
RECLAIM REGISTERS			
3/4" X 9" X 1"	Reclaim Flat Glass USG Register w/Bronze Lid	MJ08-1DA-NAA-2	
3/4" X 9" X 1"	Reclaim Flat Glass CF Register w/Bronze Lid	MJ08-2DA-NAA-2	
3/4" X 9" X 1"	Reclaim DIALOG USG Register w/Plastic Lid	MJ08-1RD-NAA-2	
3/4" X 9" X 1"	Reclaim DIALOG CF Register w/Plastic Lid	MJ08-2RD-NAA-2	
3/4" X 9" X 1"	Reclaim DIALOG USG Register w/Bronze Lid	MJ08-1RM-NAA-2	
3/4" X 9" X 1"	Reclaim DIALOG CF Register w/Bronze Lid	MJ08-2RM-NAA-2	
3/4" X 9" X 1"	Reclaim DIALOG USG Register w/DIALOG Module w/ReadPad	MJ08-1RU-NAA-2	
3/4" X 9" X 1"	Reclaim DIALOG CF Register w/DIALOG Module w/ReadPad	MJ08-2RU-NAA-2	
METER COUPLINGS			
3/4" X 9" X 1"	1" Bronze Meter Coupling w/Gasket (Price per each coupling)	903 1 CPL	

Note: *The US Gallon and Cubic Feet registers are identified above by the letters USG and CF. Meters w/ DIALOG modules, Dual & Single Switch modules and Contact Head registers will be shipped w/out lid.*

Master Meter Product List
Effective July 1, 2004

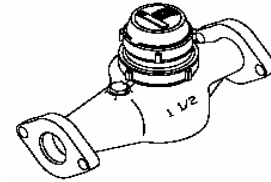


TOP LOAD COLD WATER MULTI-JET WATER METERS

1" MJ ENVIROBRASS BODY			
Size	Register	Part Number	
FLAT GLASS DIRECT READ			
1"	Flat Glass USG Register w/Bronze Lid	MJ09-1AA-NAA-2	
1"	Flat Glass CF Register w/Bronze Lid	MJ09-2AA-NAA-2	
DIALOG REGISTERS AND ELECTRONICS			
1"	DIALOG USG Register w/Plastic Lid	MJ09-1BD-NAA-2	
1"	DIALOG CF Register w/Plastic Lid	MJ09-2BD-NAA-2	
1"	DIALOG USG Register w/Bronze Lid	MJ09-1BM-NAA-2	
1"	DIALOG CF Register w/Bronze Lid	MJ09-2BM-NAA-2	
1"	DIALOG USG Register w/DIALOG Module w/ReadPad	MJ09-1BU-NAA-2	
1"	DIALOG CF Register w/DIALOG Module w/ReadPad	MJ09-2BU-NAA-2	
1"	DIALOG USG Register w/Dual Switch Module	MJ09-1BN-NAA-2	
1"	DIALOG CF Register w/Dual Switch Module	MJ09-2BN-NAA-2	
1"	DIALOG USG Register w/Single Switch Module	MJ09-1BP-NAA-2	
1"	DIALOG CF Register w/Single Switch Module	MJ09-2BP-NAA-2	
CONTACT HEAD REGISTERS			
1"	Contact Head USG Register & Reed Switch Assembly 1 Gal. Pulse	MJ09-1CH-NAA-2	
1"	Contact Head USG Register & Reed Switch Assembly 10 Gal. Pulse	MJ09-1CI-NAA-2	
1"	Contact Head USG Register & Reed Switch Assembly 100 Gal. Pulse	MJ09-1CJ-NAA-2	
1"	Contact Head USG Register w/Dual Electrical Output 1 Gal. Pulse	MJ09-1IH-NAA-2	
1"	Contact Head USG Register w/Dual Electrical Output 10 Gal. Pulse	MJ09-1II-NAA-2	
1"	Contact Head USG Register w/Dual Electrical Output 100 Gal. Pulse	MJ09-1IJ-NAA-2	
<i>Note: Contact head registers can be supplied in Cubic Feet. Contact Master Meter for proper part number.</i>			
RATE OF FLOW REGISTERS			
1"	Rate of Flow Register	MJ09-1HA-NAA-2	
RECLAIM REGISTERS			
1"	Reclaim Flat Glass USG Register w/Bronze Lid	MJ09-1DA-NAA-2	
1"	Reclaim Flat Glass CF Register w/Bronze Lid	MJ09-2DA-NAA-2	
1"	Reclaim DIALOG USG Register w/Plastic Lid	MJ09-1RD-NAA-2	
1"	Reclaim DIALOG CF Register w/Plastic Lid	MJ09-2RD-NAA-2	
1"	Reclaim DIALOG USG Register w/Bronze Lid	MJ09-1RM-NAA-2	
1"	Reclaim DIALOG CF Register w/Bronze Lid	MJ09-2RM-NAA-2	
1"	Reclaim DIALOG USG Register w/DIALOG Module w/ReadPad	MJ09-1RU-NAA-2	
1"	Reclaim DIALOG CF Register w/DIALOG Module w/ReadPad	MJ09-2RU-NAA-2	
METER COUPLINGS			
1"	1" Bronze Meter Coupling w/Gasket (Price per each coupling)	903 1 CPL	

Note: *The US Gallon and Cubic Feet registers are identified above by the letters USG and CF.
Meters w/ DIALOG modules, Dual & Single Switch modules and Contact Head registers will be shipped w/out lid.*

Master Meter Product List
Effective July 1, 2004

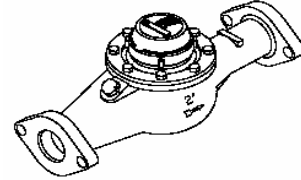


TOP LOAD COLD WATER MULTI-JET WATER METERS

1-1/2" MJ FLANGED ENVIROBRASS BODY			
Size	Register	Part Number	
FLAT GLASS DIRECT READ			
1-1/2" Flg.	Flat Glass USG Register w/Bronze Lid	MJ11-1AA-NAA-2	
1-1/2" Flg.	Flat Glass CF Register w/Bronze Lid	MJ11-2AA-NAA-2	
DIALOG REGISTERS AND ELECTRONICS			
1-1/2" Flg.	DIALOG USG Register w/Plastic Lid	MJ11-1BD-NAA-2	
1-1/2" Flg.	DIALOG CF Register w/Plastic Lid	MJ11-2BD-NAA-2	
1-1/2" Flg.	DIALOG USG Register w/Bronze Lid	MJ11-1BM-NAA-2	
1-1/2" Flg.	DIALOG CF Register w/Bronze Lid	MJ11-2BM-NAA-2	
1-1/2" Flg.	DIALOG USG Register w/DIALOG Module w/ReadPad	MJ11-1BU-NAA-2	
1-1/2" Flg.	DIALOG CF Register w/DIALOG Module w/ReadPad	MJ11-2BU-NAA-2	
1-1/2" Flg.	DIALOG USG Register w/Dual Switch Module	MJ11-1BN-NAA-2	
1-1/2" Flg.	DIALOG CF Register w/Dual Switch Module	MJ11-2BN-NAA-2	
1-1/2" Flg.	DIALOG USG Register w/Single Switch Module	MJ11-1BP-NAA-2	
1-1/2" Flg.	DIALOG CF Register w/Single Switch Module	MJ11-2BP-NAA-2	
CONTACT HEAD REGISTERS			
1-1/2" Flg.	Contact Head USG Register & Reed Switch Assembly 1 Gal. Pulse	MJ11-1CH-NAA-2	
1-1/2" Flg.	Contact Head USG Register & Reed Switch Assembly 10 Gal. Pulse	MJ11-1CI-NAA-2	
1-1/2" Flg.	Contact Head USG Register & Reed Switch Assembly 100 Gal. Pulse	MJ11-1CJ-NAA-2	
1-1/2" Flg.	Contact Head USG Register w/Dual Electrical Output 1 Gal. Pulse	MJ11-1IH-NAA-2	
1-1/2" Flg.	Contact Head USG Register w/Dual Electrical Output 10 Gal. Pulse	MJ11-1II-NAA-2	
1-1/2" Flg.	Contact Head USG Register w/Dual Electrical Output 100 Gal. Pulse	MJ11-1IJ-NAA-2	
<i>Note: Contact head registers can be supplied in Cubic Feet. Contact Master Meter for proper part number.</i>			
RATE OF FLOW REGISTERS			
1-1/2" Flg.	Rate of Flow Register	MJ11-1HA-NAA-2	
RECLAIM REGISTERS			
1-1/2" Flg.	Reclaim Flat Glass USG Register w/Bronze Lid	MJ11-1DA-NAA-2	
1-1/2" Flg.	Reclaim Flat Glass CF Register w/Bronze Lid	MJ11-2DA-NAA-2	
1-1/2" Flg.	Reclaim DIALOG USG Register w/Plastic Lid	MJ11-1RD-NAA-2	
1-1/2" Flg.	Reclaim DIALOG CF Register w/Plastic Lid	MJ11-2RD-NAA-2	
1-1/2" Flg.	Reclaim DIALOG USG Register w/Bronze Lid	MJ11-1RM-NAA-2	
1-1/2" Flg.	Reclaim DIALOG CF Register w/Bronze Lid	MJ11-2RM-NAA-2	
1-1/2" Flg.	Reclaim DIALOG USG Register w/DIALOG Module w/ReadPad	MJ11-1RU-NAA-2	
1-1/2" Flg.	Reclaim DIALOG CF Register w/DIALOG Module w/ReadPad	MJ11-2RU-NAA-2	
OVAL METER FLANGES PER PAIR			
1-1/2"	Oval Bronze Meter Flanges w/Gasket & Bolts (Price per pair)	FLG-1.5 OBR	
1-1/2"	Oval Cast Iron Meter Flanges w/Gasket & Bolts (Price per pair)	FLG-1.5 OCI	

Note: The US Gallon and Cubic Feet registers are identified above by the letters USG and CF.
Meters w/ DIALOG modules, Dual & Single Switch modules and Contact Head registers will be shipped w/out lid.

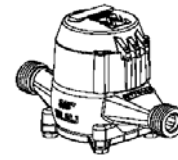
Master Meter Product List
Effective July 1, 2004



TOP LOAD COLD WATER MULTI-JET WATER METERS

2" MJ FLANGED ENVIROBRASS BODY			
Size	Register	Part Number	
FLAT GLASS DIRECT READ			
2" Flg.	Flat Glass USG Register w/Bronze Lid	MJ13-1AA-NAA-2	
2" Flg.	Flat Glass CF Register w/Bronze Lid	MJ13-2AA-NAA-2	
DIALOG REGISTERS AND ELECTRONICS			
2" Flg.	DIALOG USG Register w/Plastic Lid	MJ13-1BD-NAA-2	
2" Flg.	DIALOG CF Register w/Plastic Lid	MJ13-2BD-NAA-2	
2" Flg.	DIALOG USG Register w/Bronze Lid	MJ13-1BM-NAA-2	
2" Flg.	DIALOG CF Register w/Bronze Lid	MJ13-2BM-NAA-2	
2" Flg.	DIALOG USG Register w/DIALOG Module w/ReadPad	MJ13-1BU-NAA-2	
2" Flg.	DIALOG CF Register w/DIALOG Module w/ReadPad	MJ13-2BU-NAA-2	
2" Flg.	DIALOG USG Register w/Dual Switch Module	MJ13-1BN-NAA-2	
2" Flg.	DIALOG CF Register w/Dual Switch Module	MJ13-2BN-NAA-2	
2" Flg.	DIALOG USG Register w/Single Switch Module	MJ13-1BP-NAA-2	
2" Flg.	DIALOG CF Register w/Single Switch Module	MJ13-2BP-NAA-2	
CONTACT HEAD REGISTERS			
2" Flg.	Contact Head USG Register & Reed Switch Assembly 1 Gal. Pulse	MJ13-1CH-NAA-2	
2" Flg.	Contact Head USG Register & Reed Switch Assembly 10 Gal. Pulse	MJ13-1CI-NAA-2	
2" Flg.	Contact Head USG Register & Reed Switch Assembly 100 Gal. Pulse	MJ13-1CJ-NAA-2	
2" Flg.	Contact Head USG Register w/Dual Electrical Output 1 Gal. Pulse	MJ13-1IH-NAA-2	
2" Flg.	Contact Head USG Register w/Dual Electrical Output 10 Gal. Pulse	MJ13-1II-NAA-2	
2" Flg.	Contact Head USG Register w/Dual Electrical Output 100 Gal. Pulse	MJ13-1IJ-NAA-2	
<i>Note: Contact head registers can be supplied in Cubic Feet. Contact Master Meter for proper part number.</i>			
RATE OF FLOW REGISTERS			
2" Flg.	Rate of Flow Register	MJ13-1HA-NAA-2	
RECLAIM REGISTERS			
2" Flg.	Reclaim Flat Glass USG Register w/Bronze Lid	MJ13-1DA-NAA-2	
2" Flg.	Reclaim Flat Glass CF Register w/Bronze Lid	MJ13-2DA-NAA-2	
2" Flg.	Reclaim DIALOG USG Register w/Plastic Lid	MJ13-1RD-NAA-2	
2" Flg.	Reclaim DIALOG CF Register w/Plastic Lid	MJ13-2RD-NAA-2	
2" Flg.	Reclaim DIALOG USG Register w/Bronze Lid	MJ13-1RM-NAA-2	
2" Flg.	Reclaim DIALOG CF Register w/Bronze Lid	MJ13-2RM-NAA-2	
2" Flg.	Reclaim DIALOG USG Register w/DIALOG Module w/ReadPad	MJ13-1RU-NAA-2	
2" Flg.	Reclaim DIALOG CF Register w/DIALOG Module w/ReadPad	MJ13-2RU-NAA-2	
OVAL METER FLANGES PER PAIR			
2"	Oval Bronze Meter Flanges w/Gasket & Bolts (Price per pair)	FLG-2 OBR	
2"	Oval Cast Iron Meter Flanges w/Gasket & Bolts (Price per pair)	FLG-2 OCI	

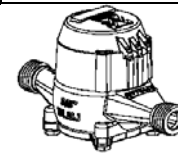
Note: The US Gallon and Cubic Feet registers are identified above by the letters USG and CF.
Meters w/ DIALOG modules, Dual & Single Switch modules and Contact Head registers will be shipped w/out lid.



BOTTOM LOAD COLD WATER MULTI-JET METERS "BRONZE BODY"

5/8" BRONZE BODY BLMJ WITH BRONZE BOTTOM PLATE			
Size	Register	Part Number	
	FLAT GLASS DIRECT READ		
5/8"	Flat Glass USG Big Dial Register w/Plastic Lid	BL04-5AA-AAA-2	
5/8"	Flat Glass CF Big Dial Register w/Plastic Lid	BL04-6AA-AAA-2	
	DIALOG REGISTERS AND ELECTRONICS		
5/8"	DIALOG USG 2G Register w/External Readpad	BL04-1JA-AAA-2	
5/8"	DIALOG CF 2G Register w/External Readpad	BL04-2JA-AAA-2	
	METER COUPLINGS		
5/8"	1/2" Bronze Meter Coupling w/Gasket (Price per each coupling)	901 1/2 CPL	

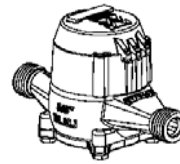
5/8" BRONZE BODY BLMJ WITH PLASTIC BOTTOM PLATE			
Size	Register	Part Number	
	FLAT GLASS DIRECT READ		
5/8"	Flat Glass USG Big Dial Register w/Plastic Lid	BL04-5AA-BAA-2	
5/8"	Flat Glass CF Big Dial Register w/Plastic Lid	BL04-6AA-BAA-2	
	DIALOG REGISTERS AND ELECTRONICS		
5/8"	DIALOG USG 2G Register w/External Readpad	BL04-1JA-BAA-2	
5/8"	DIALOG CF 2G Register w/External Readpad	BL04-2JA-BAA-2	
	METER COUPLINGS		
5/8"	1/2" Bronze Meter Coupling w/Gasket (Price per each coupling)	901 1/2 CPL	



5/8" X 3/4" BRONZE BODY BLMJ WITH BRONZE BOTTOM PLATE			
Size	Register	Part Number	
	FLAT GLASS DIRECT READ		
5/8" x 3/4"	Flat Glass USG Big Dial Register w/Plastic Lid	BL05-5AA-AAA-2	
5/8" x 3/4"	Flat Glass CF Big Dial Register w/Plastic Lid	BL05-6AA-AAA-2	
	DIALOG REGISTERS AND ELECTRONICS		
5/8" x 3/4"	DIALOG USG 2G Register w/External Readpad	BL05-1JA-AAA-2	
5/8" x 3/4"	DIALOG CF 2G Register w/External Readpad	BL05-2JA-AAA-2	
	METER COUPLINGS		
5/8" x 3/4"	3/4" Bronze Meter Coupling w/Gasket (Price per each coupling)	902 3/4 CPL	

5/8" X 3/4" BRONZE BODY BLMJ WITH PLASTIC BOTTOM PLATE			
Size	Register	Part Number	
	FLAT GLASS DIRECT READ		
5/8" x 3/4"	Flat Glass USG Big Dial Register w/Plastic Lid	BL05-5AA-BAA-2	
5/8" x 3/4"	Flat Glass CF Big Dial Register w/Plastic Lid	BL05-6AA-BAA-2	
	DIALOG REGISTERS AND ELECTRONICS		
5/8" x 3/4"	DIALOG USG 2G Register w/External Readpad	BL05-1JA-BAA-2	
5/8" x 3/4"	DIALOG CF 2G Register w/External Readpad	BL05-2JA-BAA-2	
	METER COUPLINGS		
5/8" x 3/4"	3/4" Bronze Meter Coupling w/Gasket (Price per each coupling)	902 3/4 CPL	

Note: The US Gallon and Cubic Feet registers are identified above by the letters USG and CF.



BOTTOM LOAD COLD WATER MULTI-JET METERS "BRONZE BODY"

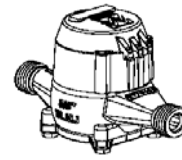
3/4" X 7-1/2" BRONZE BODY BLMJ WITH BRONZE BOTTOM PLATE

Size	Register	Part Number	
FLAT GLASS DIRECT READ			
3/4" (7-1/2")	Flat Glass USG Big Dial Register w/Plastic Lid	BL06-5AA-AAA-2	
3/4" (7-1/2")	Flat Glass CF Big Dial Register w/Plastic Lid	BL06-6AA-AAA-2	
DIALOG REGISTERS AND ELECTRONICS			
3/4" (7-1/2")	DIALOG USG 2G Register w/External Readpad	BL06-1JA-AAA-2	
3/4" (7-1/2")	DIALOG CF 2G Register w/External Readpad	BL06-2JA-AAA-2	
METER COUPLINGS			
3/4" (7-1/2")	3/4" Bronze Meter Coupling w/Gasket (Price per each coupling)	902 3/4 CPL	

3/4" X 7-1/2" BRONZE BODY BLMJ WITH PLASTIC BOTTOM PLATE

Size	Register	Part Number	
FLAT GLASS DIRECT READ			
3/4" (7-1/2")	Flat Glass USG Big Dial Register w/Plastic Lid	BL06-5AA-BAA-2	
3/4" (7-1/2")	Flat Glass CF Big Dial Register w/Plastic Lid	BL06-6AA-BAA-2	
DIALOG REGISTERS AND ELECTRONICS			
3/4" (7-1/2")	DIALOG USG 2G Register w/External Readpad	BL06-1JA-BAA-2	
3/4" (7-1/2")	DIALOG CF 2G Register w/External Readpad	BL06-2JA-BAA-2	
METER COUPLINGS			
3/4" (7-1/2")	3/4" Bronze Meter Coupling w/Gasket (Price per each coupling)	902 3/4 CPL	

Note: The US Gallon and Cubic Feet registers are identified above by the letters USG and CF.



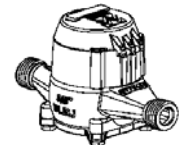
BOTTOM LOAD COLD WATER MULTI-JET METERS "ENVIROBRASS BODY"

5/8" ENVIROBRASS BODY BLMJ WITH BRONZE BOTTOM PLATE

Size	Register	Part Number	
	FLAT GLASS DIRECT READ		
5/8"	Flat Glass USG Big Dial Register w/Plastic Lid	BL04-5AA-NAA-2	
5/8"	Flat Glass CF Big Dial Register w/Plastic Lid	BL04-6AA-NAA-2	
	DIALOG REGISTERS AND ELECTRONICS		
5/8"	DIALOG USG 2G Register w/External Readpad	BL04-1JA-NAA-2	
5/8"	DIALOG CF 2G Register w/External Readpad	BL04-2JA-NAA-2	
	METER COUPLINGS		
5/8"	1/2" Bronze Meter Coupling w/Gasket (Price per each coupling)	901 1/2 CPL	

5/8" ENVIROBRASS BODY BLMJ WITH PLASTIC BOTTOM PLATE

Size	Register	Part Number	
	FLAT GLASS DIRECT READ		
5/8"	Flat Glass USG Big Dial Register w/Plastic Lid	BL04-5AA-CAA-2	
5/8"	Flat Glass CF Big Dial Register w/Plastic Lid	BL04-6AA-CAA-2	
	DIALOG REGISTERS AND ELECTRONICS		
5/8"	DIALOG USG 2G Register w/External Readpad	BL04-1JA-CAA-2	
5/8"	DIALOG CF 2G Register w/External Readpad	BL04-2JA-CAA-2	
	METER COUPLINGS		
5/8"	1/2" Bronze Meter Coupling w/Gasket (Price per each coupling)	901 1/2 CPL	



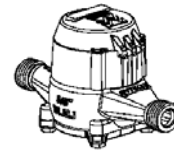
5/8" X 3/4" ENVIROBRASS BODY BLMJ WITH BRONZE BOTTOM PLATE

Size	Register	Part Number	
	FLAT GLASS DIRECT READ		
5/8" x 3/4"	Flat Glass USG Big Dial Register w/Plastic Lid	BL05-5AA-NAA-2	
5/8" x 3/4"	Flat Glass CF Big Dial Register w/Plastic Lid	BL05-6AA-NAA-2	
	DIALOG REGISTERS AND ELECTRONICS		
5/8" x 3/4"	DIALOG USG 2G Register w/External Readpad	BL05-1JA-NAA-2	
5/8" x 3/4"	DIALOG CF 2G Register w/External Readpad	BL05-2JA-NAA-2	
	METER COUPLINGS		
5/8" x 3/4"	3/4" Bronze Meter Coupling w/Gasket (Price per each coupling)	901 3/4 CPL	

5/8" X 3/4" ENVIROBRASS BODY BLMJ WITH PLASTIC BOTTOM PLATE

Size	Register	Part Number	
	FLAT GLASS DIRECT READ		
5/8" x 3/4"	Flat Glass USG Big Dial Register w/Plastic Lid	BL05-5AA-CAA-2	
5/8" x 3/4"	Flat Glass CF Big Dial Register w/Plastic Lid	BL05-6AA-CAA-2	
	DIALOG REGISTERS AND ELECTRONICS		
5/8" x 3/4"	DIALOG USG 2G Register w/External Readpad	BL05-1JA-CAA-2	
5/8" x 3/4"	DIALOG CF 2G Register w/External Readpad	BL05-2JA-CAA-2	
	METER COUPLINGS		
5/8" x 3/4"	3/4" Bronze Meter Coupling w/Gasket (Price per each coupling)	902 3/4 CPL	

Note: The US Gallon and Cubic Feet registers are identified above by the letters USG and CF.



BOTTOM LOAD COLD WATER MULTI-JET METERS "ENVIROBRASS BODY"

3/4" X 7-1/2" ENVIROBRASS BODY BLMJ WITH BRONZE BOTTOM PLATE

Size	Register	Part Number	
FLAT GLASS DIRECT READ			
3/4" (7-1/2")	Flat Glass USG Big Dial Register w/Plastic Lid	BL06-5AA-NAA-2	
3/4" (7-1/2")	Flat Glass CF Big Dial Register w/Plastic Lid	BL06-6AA-NAA-2	
DIALOG REGISTERS AND ELECTRONICS			
3/4" (7-1/2")	DIALOG USG 2G Register w/External Readpad	BL06-1JA-NAA-2	
3/4" (7-1/2")	DIALOG CF 2G Register w/External Readpad	BL06-2JA-NAA-2	
METER COUPLINGS			
3/4" (7-1/2")	3/4" Bronze Meter Coupling w/Gasket (Price per each coupling)	902 3/4 CPL	

Note: Many of the meters above are available in Cubic Meter and other units of measure. Please contact Master Meter for the availability and the proper part number.

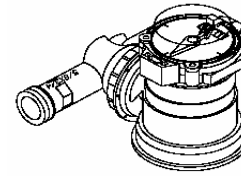
The US Gallon and Cubic Feet registers are identified above by the letters USG and CF.

3/4" X 7-1/2" ENVIROBRASS BODY BLMJ WITH BRONZE BOTTOM PLATE

Size	Register	Part Number	
FLAT GLASS DIRECT READ			
3/4" (7-1/2")	Flat Glass USG Big Dial Register w/Plastic Lid	BL06-5AA-CAA-2	
3/4" (7-1/2")	Flat Glass CF Big Dial Register w/Plastic Lid	BL06-6AA-CAA-2	
DIALOG REGISTERS AND ELECTRONICS			
3/4" (7-1/2")	DIALOG USG 2G Register w/External Readpad	BL06-1JA-CAA-2	
3/4" (7-1/2")	DIALOG CF 2G Register w/External Readpad	BL06-2JA-CAA-2	
METER COUPLINGS			
3/4" (7-1/2")	3/4" Bronze Meter Coupling w/Gasket (Price per each coupling)	902 3/4 CPL	

Note: The US Gallon and Cubic Feet registers are identified above by the letters USG and CF.

Master Meter Product List
Effective July 1, 2004



FLEXIBLE AXIS METER (FAM)

5/8" X 3/4" FAM METER WITH ENVIROBRASS FLOW TUBE

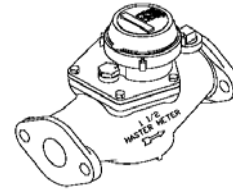
Size	Register	Part Number	
DIALOG REGISTERS AND ELECTRONICS			
5/8" X 3/4"	DIALOG USG Register	FM05-1BA-NAA-2	
5/8" X 3/4"	DIALOG CF Register	FM05-2BA-NAA-2	
5/8" X 3/4"	DIALOG USG Register w/Dual Switch Module	FM05-1BN-NAA-2	
5/8" X 3/4"	DIALOG CF Register w/Dual Switch Module	FM05-2BN-NAA-2	
CONTACT HEAD REGISTERS			
5/8" X 3/4"	Contact Head USG Register & Reed Switch Assembly 1 Gal. Pulse	FM05-1CH-NAA-2	
5/8" X 3/4"	Contact Head USG Register & Reed Switch Assembly 10 Gal. Pulse	FM05-1CI-NAA-2	
5/8" X 3/4"	Contact Head CF Register & Reed Switch Assembly 1 CF. Pulse	FM05-2CH-NAA-2	
FAM MEASURING UNIT ONLY			
5/8" X 3/4"	Measuring Unit Only w/ USG DIALOG Register	543 171 90	
5/8" X 3/4"	Measuring Unit Only w/ CF DIALOG Register	543 175 90	
5/8" X 3/4"	Measuring Unit Only w/USG Contact Head Register 10 Gal. Pulse	543 141 73	
5/8" X 3/4"	Measuring Unit Only w/CF Contact Head Register 1 CF Pulse	543 173 73	
FAM FLOW TUBE ONLY WITH PLUG			
5/8" X 3/4"	Envirobrass Flow Tube w/Plug	D 996 150 FAM	
METER COUPLINGS			
5/8" x 3/4"	3/4" Bronze Meter Coupling w/Gasket (Price per each coupling)	902 3/4 CPL	

3/4" FAM METER WITH ENVIROBRASS FLOW TUBE

Size	Register	Part Number	
DIALOG REGISTERS AND ELECTRONICS			
3/4"	DIALOG USG Register	FM06-1BA-NAA-2	
3/4"	DIALOG CF Register	FM06-2BA-NAA-2	
3/4"	DIALOG USG Register w/Dual Switch Module	FM06-1BN-NAA-2	
3/4"	DIALOG CF Register w/Dual Switch Module	FM06-2BN-NAA-2	
CONTACT HEAD REGISTERS			
3/4"	Contact Head USG Register & Reed Switch Assembly 1 Gal. Pulse	FM06-1CH-NAA-2	
3/4"	Contact Head USG Register & Reed Switch Assembly 10 Gal. Pulse	FM06-1CI-NAA-2	
FAM MEASURING UNIT ONLY			
3/4"	Measuring Unit Only w/USG Contact Head Register 1Gal. Pulse	543 146 72	
3/4"	Measuring Unit Only w/USG Contact Head Register 10 Gal. Pulse	543 146 73	
FAM FLOW TUBE ONLY WITH PLUG			
3/4"	Envirobrass Flow Tube w/Plug	D 996 151 FAM	
METER COUPLINGS			
3/4"	3/4" Bronze Meter Coupling w/Gasket (Price per each coupling)	902 3/4 CPL	

Note: The US Gallon and Cubic Feet registers are identified above by the letters USG and CF.

Master Meter Product List
Effective July 1, 2004

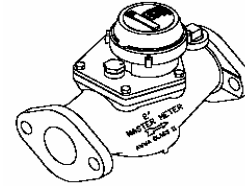


BRONZE BODY TURBINE METERS

1-1/2" WZ BRONZE BODY TURBINE			
Size	Register	Part Number	
DIALOG REGISTERS AND ELECTRONICS			
1-1/2"	DIALOG USG Register w/Bronze Lid	TM11-1BM-AAG-2	
1-1/2"	DIALOG CF Register w/Bronze Lid	TM11-2BM-AAG-2	
1-1/2"	DIALOG USG Register w/DIALOG Module w/ReadPad	TM11-1BU-AAG-2	
1-1/2"	DIALOG CF Register w/DIALOG Module w/ReadPad	TM11-2BU-AAG-2	
1-1/2"	DIALOG USG Register w/Dual Switch Module	TM11-1BN-AAG-2	
1-1/2"	DIALOG CF Register w/Dual Switch Module	TM11-2BN-AAG-2	
1-1/2"	DIALOG USG Register w/Single Switch Module	TM11-1BP-AAG-2	
1-1/2"	DIALOG CF Register w/Single Switch Module	TM11-2BP-AAG-2	
CONTACT HEAD REGISTERS			
1-1/2"	Contact Head USG Register & Reed Switch Assembly 10 Gal. Pulse	TM11-1CI-AAG-2	
1-1/2"	Contact Head USG Register & Reed Switch Assembly 100 Gal. Pulse	TM11-1CJ-AAG-2	
1-1/2"	Contact Head USG Register & Reed Switch Assembly 1000 Gal. Pulse	TM11-1CK-AAG-2	
1-1/2"	Contact Head USG Register w/Dual Electrical Output 10 Gal. Pulse	TM11-1II-AAG-2	
1-1/2"	Contact Head USG Register w/Dual Electrical Output 100 Gal. Pulse	TM11-1IJ-AAG-2	
1-1/2"	Contact Head USG Register w/Dual Electrical Output 1000 Gal. Pulse	TM11-1IK-AAG-2	
<i>Note: Contact head registers can be supplied in Cubic Feet. Contact Master Meter for proper part number.</i>			
RATE OF FLOW REGISTERS			
1-1/2"	Rate of Flow Register	TM11-1HA-AAG-2	
RECLAIM REGISTERS			
1-1/2"	Reclaim Flat Glass USG Register w/Bronze Lid	TM11-1DA-AAG-2	
1-1/2"	Reclaim Flat Glass CF Register w/Bronze Lid	TM11-2DA-AAG-2	
1-1/2"	Reclaim DIALOG USG Register w/Bronze Lid	TM11-1RM-AAG-2	
1-1/2"	Reclaim DIALOG CF Register w/Bronze Lid	TM11-2RM-AAG-2	
1-1/2"	Reclaim DIALOG USG Register w/DIALOG Module w/ReadPad	TM11-1RU-AAG-2	
1-1/2"	Reclaim DIALOG CF Register w/DIALOG Module w/ReadPad	TM11-2RU-AAG-2	
OVAL METER FLANGES PER PAIR			
1-1/2"	Oval Bronze Meter Flanges w/Gasket & Bolts (Price per pair)	FLG-1.5 OBR	
1-1/2"	Oval Cast Iron Meter Flanges w/Gasket & Bolts (Price per pair)	FLG-1.5 OCI	
STRAINERS			
1-1/2"	Bronze Strainer When Purchased w/ Meter (7" length)	907 150 TSA	
1-1/2"	Bronze Strainer When Purchased Separate (7" length)	907 150 TSA	

Note: The US Gallon and Cubic Feet registers are identified above by the letters USG and CF.

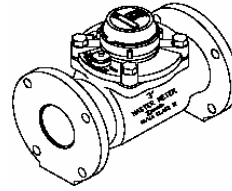
Master Meter Product List
Effective July 1, 2004



BRONZE BODY TURBINE METERS

2" WZ BRONZE BODY TURBINE			
Size	Register	Part Number	
DIALOG REGISTERS AND ELECTRONICS			
2"	DIALOG USG Register w/Bronze Lid	TM13-1BM-AAG-2	
2"	DIALOG CF Register w/Bronze Lid	TM13-2BM-AAG-2	
2"	DIALOG USG Register w/DIALOG Module w/ReadPad	TM13-1BU-AAG-2	
2"	DIALOG CF Register w/DIALOG Module w/ReadPad	TM13-2BU-AAG-2	
2"	DIALOG USG Register w/Dual Switch Module	TM13-1BN-AAG-2	
2"	DIALOG CF Register w/Dual Switch Module	TM13-2BN-AAG-2	
2"	DIALOG USG Register w/Single Switch Module	TM13-1BP-AAG-2	
2"	DIALOG CF Register w/Single Switch Module	TM13-2BP-AAG-2	
CONTACT HEAD REGISTERS			
2"	Contact Head USG Register & Reed Switch Assembly 10 Gal. Pulse	TM13-1CI-AAG-2	
2"	Contact Head USG Register & Reed Switch Assembly 100 Gal. Pulse	TM13-1CJ-AAG-2	
2"	Contact Head USG Register & Reed Switch Assembly 1000 Gal. Pulse	TM13-1KI-AAG-2	
2"	Contact Head USG Register w/Dual Electrical Output 10 Gal. Pulse	TM13-1II-AAG-2	
2"	Contact Head USG Register w/Dual Electrical Output 100 Gal. Pulse	TM13-1IJ-AAG-2	
2"	Contact Head USG Register w/Dual Electrical Output 1000 Gal. Pulse	TM13-1IK-AAG-2	
<i>Note: Contact head registers can be supplied in Cubic Feet. Contact Master Meter for proper part number.</i>			
RATE OF FLOW REGISTERS			
2"	Rate of Flow Register	TM13-1HA-AAG-2	
RECLAIM REGISTERS			
2"	Reclaim Flat Glass USG Register w/Bronze Lid	TM13-1DA-AAG-2	
2"	Reclaim Flat Glass CF Register w/Bronze Lid	TM13-2DA-AAG-2	
2"	Reclaim DIALOG USG Register w/Bronze Lid	TM13-1RM-AAG-2	
2"	Reclaim DIALOG CF Register w/Bronze Lid	TM13-2RM-AAG-2	
2"	Reclaim DIALOG USG Register w/DIALOG Module w/ReadPad	TM13-1RU-AAG-2	
2"	Reclaim DIALOG CF Register w/DIALOG Module w/ReadPad	TM13-2RU-AAG-2	
OVAL METER FLANGES PER PAIR			
2"	Oval Bronze Meter Flanges w/Gasket & Bolts (Price per pair)	FLG-2 OBR	
2"	Oval Cast Iron Meter Flanges w/Gasket & Bolts (Price per pair)	FLG-2 OCI	
STRAINERS			
2"	Bronze Strainer When Purchased w/ Meter (7" length)	907 200 TSA	
2"	Bronze Strainer When Purchased Separate (7" length)	907 200 TSA	

Note: The US Gallon and Cubic Feet registers are identified above by the letters USG and CF.

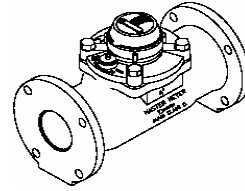


BRONZE BODY TURBINE METERS

3" MMT BRONZE BODY TURBINE

Size	Register	Part Number	
DIALOG REGISTERS AND ELECTRONICS			
3"	DIALOG USG Register w/Bronze Lid	TM14-1BM-AAA-2	
3"	DIALOG CF Register w/Bronze Lid	TM14-2BM-AAA-2	
3"	DIALOG USG Register w/DIALOG Module w/ReadPad	TM14-1BU-AAA-2	
3"	DIALOG CF Register w/DIALOG Module w/ReadPad	TM14-2BU-AAA-2	
3"	DIALOG USG Register w/Dual Switch Module	TM14-1BN-AAA-2	
3"	DIALOG CF Register w/Dual Switch Module	TM14-2BN-AAA-2	
3"	DIALOG USG Register w/Single Switch Module	TM14-1BP-AAA-2	
3"	DIALOG CF Register w/Single Switch Module	TM14-2BP-AAA-2	
CONTACT HEAD REGISTERS			
3"	Contact Head USG Register & Reed Switch Assembly 10 Gal. Pulse	TM14-1CI-AAA-2	
3"	Contact Head USG Register & Reed Switch Assembly 100 Gal. Pulse	TM14-1CJ-AAA-2	
3"	Contact Head USG Register & Reed Switch Assembly 1000 Gal. Pulse	TM14-1CK-AAA-2	
3"	Contact Head USG Register w/Dual Electrical Output 10 Gal. Pulse	TM14-1II-AAA-2	
3"	Contact Head USG Register w/Dual Electrical Output 100 Gal. Pulse	TM14-1IJ-AAA-2	
3"	Contact Head USG Register w/Dual Electrical Output 1000 Gal. Pulse	TM14-1IK-AAA-2	
<i>Note: Contact head registers can be supplied in Cubic Feet. Contact Master Meter for proper part number.</i>			
RATE OF FLOW REGISTERS			
3"	Rate of Flow Register	TM14-1HA-AAA-2	
RECLAIM REGISTERS			
3"	Reclaim Flat Glass USG Register w/Bronze Lid	TM14-1DA-AAA-2	
3"	Reclaim Flat Glass CF Register w/Bronze Lid	TM14-2DA-AAA-2	
3"	Reclaim DIALOG USG Register w/Bronze Lid	TM14-1RM-AAA-2	
3"	Reclaim DIALOG CF Register w/Bronze Lid	TM14-2RM-AAA-2	
3"	Reclaim DIALOG USG Register w/DIALOG Module w/ReadPad	TM14-1RU-AAA-2	
3"	Reclaim DIALOG CF Register w/DIALOG Module w/ReadPad	TM14-2RU-AAA-2	
METER FLANGES PER PAIR			
3"	Round Cast Iron Meter Flanges w/Gasket & Bolts (Price per pair)	FLG-3	
STRAINERS			
3"	Bronze Strainer When Purchased w/ Meter (6" length)	907 300 TSA	
3"	Bronze Strainer When Purchased Separate (6" length)	907 300 TSA	

Note: The US Gallon and Cubic Feet registers are identified above by the letters USG and CF.



BRONZE BODY TURBINE METERS

4" MMT BRONZE BODY TURBINE

Size	Register	Part Number	
------	----------	-------------	--

DIALOG REGISTERS AND ELECTRONICS

4"	DIALOG USG Register w/Bronze Lid	TM15-1BM-AAA-2	
4"	DIALOG CF Register w/Bronze Lid	TM15-2BM-AAA-2	
4"	DIALOG USG Register w/DIALOG Module w/ReadPad	TM15-1BU-AAA-2	
4"	DIALOG CF Register w/DIALOG Module w/ReadPad	TM15-2BU-AAA-2	
4"	DIALOG USG Register w/Dual Switch Module	TM15-1BN-AAA-2	
4"	DIALOG CF Register w/Dual Switch Module	TM15-2BN-AAA-2	
4"	DIALOG USG Register w/Single Switch Module	TM15-1BP-AAA-2	
4"	DIALOG CF Register w/Single Switch Module	TM15-2BP-AAA-2	

CONTACT HEAD REGISTERS

4"	Contact Head USG Register & Reed Switch Assembly 10 Gal. Pulse	TM15-1CI-AAA-2	
4"	Contact Head USG Register & Reed Switch Assembly 100 Gal. Pulse	TM15-1CJ-AAA-2	
4"	Contact Head USG Register & Reed Switch Assembly 1000 Gal. Pulse	TM15-1CK-AAA-2	
4"	Contact Head USG Register w/Dual Electrical Output 10 Gal. Pulse	TM15-1II-AAA-2	
4"	Contact Head USG Register w/Dual Electrical Output 100 Gal. Pulse	TM15-1IJ-AAA-2	
4"	Contact Head USG Register w/Dual Electrical Output 1000 Gal. Pulse	TM15-1IK-AAA-2	

Note: Contact head registers can be supplied in Cubic Feet. Contact Master Meter for proper part number.

RATE OF FLOW REGISTERS

4"	Rate of Flow Register	TM15-1HA-AAA-2	
----	-----------------------	----------------	--

RECLAIM REGISTERS

4"	Reclaim Flat Glass USG Register w/Bronze Lid	TM15-1DA-AAA-2	
4"	Reclaim Flat Glass CF Register w/Bronze Lid	TM15-2DA-AAA-2	
4"	Reclaim DIALOG USG Register w/Bronze Lid	TM15-1RM-AAA-2	
4"	Reclaim DIALOG CF Register w/Bronze Lid	TM15-2RM-AAA-2	
4"	Reclaim DIALOG USG Register w/DIALOG Module w/ReadPad	TM15-1RU-AAA-2	
4"	Reclaim DIALOG CF Register w/DIALOG Module w/ReadPad	TM15-2RU-AAA-2	

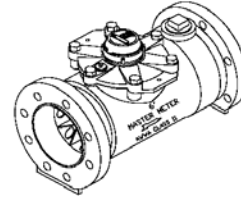
METER FLANGES PER PAIR

4"	Round Cast Iron Meter Flanges w/Gasket & Bolts (Price per pair)	FLG-4	
----	---	-------	--

STRAINERS

4"	Bronze Strainer When Purchased w/ Meter (7-1/2" length)	907 400 TSA	
4"	Bronze Strainer When Purchased Separate (7-1/2" length)	907 400 TSA	

Note: The US Gallon and Cubic Feet registers are identified above by the letters USG and CF.

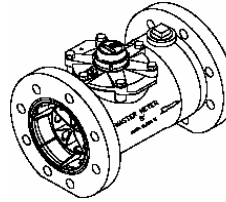


BRONZE BODY TURBINE METERS

6" MMT BRONZE BODY TURBINE

Size	Register	Part Number	
DIALOG REGISTERS AND ELECTRONICS			
6"	DIALOG USG Register w/Bronze Lid	TM16-1BM-AAA-2	
6"	DIALOG CF Register w/Bronze Lid	TM16-2BM-AAA-2	
6"	DIALOG USG Register w/DIALOG Module w/ReadPad	TM16-1BU-AAA-2	
6"	DIALOG CF Register w/DIALOG Module w/ReadPad	TM16-2BU-AAA-2	
6"	DIALOG USG Register w/Dual Switch Module	TM16-1BN-AAA-2	
6"	DIALOG CF Register w/Dual Switch Module	TM16-2BN-AAA-2	
6"	DIALOG USG Register w/Single Switch Module	TM16-1BP-AAA-2	
6"	DIALOG CF Register w/Single Switch Module	TM16-2BP-AAA-2	
CONTACT HEAD REGISTERS			
6"	Contact Head USG Register & Reed Switch Assembly 100 Gal. Pulse	TM16-1CJ-AAA-2	
6"	Contact Head USG Register & Reed Switch Assembly 1000 Gal. Pulse	TM16-1CK-AAA-2	
6"	Contact Head USG Register & Reed Switch Assembly 10000 Gal. Pulse	TM16-1CL-AAA-2	
6"	Contact Head USG Register w/Dual Electrical Output 100 Gal. Pulse	TM16-1IJ-AAA-2	
6"	Contact Head USG Register w/Dual Electrical Output 1000 Gal. Pulse	TM16-1IK-AAA-2	
6"	Contact Head USG Register w/Dual Electrical Output 10000 Gal. Pulse	TM16-1IL-AAA-2	
<i>Note: Contact head registers can be supplied in Cubic Feet. Contact Master Meter for proper part number.</i>			
RATE OF FLOW REGISTERS			
6"	Rate of Flow Register	TM16-1HA-AAA-2	
RECLAIM REGISTERS			
6"	Reclaim Flat Glass USG Register w/Bronze Lid	TM16-1DA-AAA-2	
6"	Reclaim Flat Glass CF Register w/Bronze Lid	TM16-2DA-AAA-2	
6"	Reclaim DIALOG USG Register w/Bronze Lid	TM16-1RM-AAA-2	
6"	Reclaim DIALOG CF Register w/Bronze Lid	TM16-2RM-AAA-2	
6"	Reclaim DIALOG USG Register w/DIALOG Module w/ReadPad	TM16-1RU-AAA-2	
6"	Reclaim DIALOG CF Register w/DIALOG Module w/ReadPad	TM16-2RU-AAA-2	
METER FLANGES PER PAIR			
6"	Round Cast Iron Meter Flanges w/Gasket & Bolts (Price per pair)	FLG-6	
STRAINERS			
6"	Bronze Strainer When Purchased w/ Meter (8-15/16" length)	907 600 TSA	
6"	Bronze Strainer When Purchased Separate (8-15/16" length)	907 600 TSA	

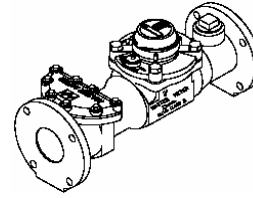
Note: The US Gallon and Cubic Feet registers are identified above by the letters USG and CF.



BRONZE BODY TURBINE METERS

8" MMT BRONZE BODY TURBINE			
Size	Register	Part Number	
DIALOG REGISTERS AND ELECTRONICS			
8"	DIALOG USG Register w/Bronze Lid	TM17-1BM-AAA-2	
8"	DIALOG CF Register w/Bronze Lid	TM17-2BM-AAA-2	
8"	DIALOG USG Register w/DIALOG Module w/ReadPad	TM17-1BU-AAA-2	
8"	DIALOG CF Register w/DIALOG Module w/ReadPad	TM17-2BU-AAA-2	
8"	DIALOG USG Register w/Dual Switch Module	TM17-1BN-AAA-2	
8"	DIALOG CF Register w/Dual Switch Module	TM17-2BN-AAA-2	
8"	DIALOG USG Register w/Single Switch Module	TM17-1BP-AAA-2	
8"	DIALOG CF Register w/Single Switch Module	TM17-2BP-AAA-2	
CONTACT HEAD REGISTERS			
8"	Contact Head USG Register & Reed Switch Assembly 100 Gal. Pulse	TM17-1CJ-AAA-2	
8"	Contact Head USG Register & Reed Switch Assembly 1000 Gal. Pulse	TM17-1CK-AAA-2	
8"	Contact Head USG Register & Reed Switch Assembly 10000 Gal. Pulse	TM17-1CL-AAA-2	
8"	Contact Head USG Register w/Dual Electrical Output 100 Gal. Pulse	TM17-1IJ-AAA-2	
8"	Contact Head USG Register w/Dual Electrical Output 1000 Gal. Pulse	TM17-1IK-AAA-2	
8"	Contact Head USG Register w/Dual Electrical Output 10000 Gal. Pulse	TM17-1IL-AAA-2	
<i>Note: Contact head registers can be supplied in Cubic Feet. Contact Master Meter for proper part number.</i>			
RATE OF FLOW REGISTERS			
8"	Rate of Flow Register	TM17-1HA-AAA-2	
RECLAIM REGISTERS			
8"	Reclaim Flat Glass USG Register w/Bronze Lid	TM17-1DA-AAA-2	
8"	Reclaim Flat Glass CF Register w/Bronze Lid	TM17-2DA-AAA-2	
8"	Reclaim DIALOG USG Register w/Bronze Lid	TM17-1RM-AAA-2	
8"	Reclaim DIALOG CF Register w/Bronze Lid	TM17-2RM-AAA-2	
8"	Reclaim DIALOG USG Register w/DIALOG Module w/ReadPad	TM17-1RU-AAA-2	
8"	Reclaim DIALOG CF Register w/DIALOG Module w/ReadPad	TM17-2RU-AAA-2	
METER FLANGES PER PAIR			
8"	Round Cast Iron Meter Flanges w/Gasket & Bolts (Price per pair)	FLG-8	
STRAINERS			
8"	Cast Iron Strainer When Purchased w/ Meter	907 800 TS	
8"	Cast Iron Strainer When Purchased Separate	907 800 TS	

Note: The US Gallon and Cubic Feet registers are identified above by the letters USG and CF.



BRONZE BODY TURBINE METERS WITH INTEGRAL STRAINER

2" MMT-S BRONZE BODY TURBINE

Size	Register	Part Number	
------	----------	-------------	--

DIALOG REGISTERS AND ELECTRONICS

2"	DIALOG USG Register w/Bronze Lid	TS13-1BM-AKG-2	
2"	DIALOG CF Register w/Bronze Lid	TS13-2BM-AKG-2	
2"	DIALOG USG Register w/DIALOG Module w/ReadPad	TS13-1BU-AKG-2	
2"	DIALOG CF Register w/DIALOG Module w/ReadPad	TS13-2BU-AKG-2	
2"	DIALOG USG Register w/Dual Switch Module	TS13-1BN-AKG-2	
2"	DIALOG CF Register w/Dual Switch Module	TS13-2BN-AKG-2	
2"	DIALOG USG Register w/Single Switch Module	TS13-1BP-AKG-2	
2"	DIALOG CF Register w/Single Switch Module	TS13-2BP-AKG-2	

CONTACT HEAD REGISTERS

2"	Contact Head USG Register & Reed Switch Assembly 10 Gal. Pulse	TS13-1CI-AKG-2	
2"	Contact Head USG Register & Reed Switch Assembly 100 Gal. Pulse	TS13-1CJ-AKG-2	
2"	Contact Head USG Register & Reed Switch Assembly 1000 Gal. Pulse	TS13-1CK-AKG-2	
2"	Contact Head USG Register w/Dual Electrical Output 10 Gal. Pulse	TS13-1II-AKG-2	
2"	Contact Head USG Register w/Dual Electrical Output 100 Gal. Pulse	TS13-1IJ-AKG-2	
2"	Contact Head USG Register w/Dual Electrical Output 1000 Gal. Pulse	TS13-1IK-AKG-2	

Note: Contact head registers can be supplied in Cubic Feet. Contact Master Meter for proper part number.

RATE OF FLOW REGISTERS

2"	Rate of Flow Register	TS13-1HA-AKG-2	
----	-----------------------	----------------	--

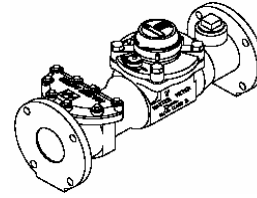
RECLAIM REGISTERS

2"	Reclaim Flat Glass USG Register w/Bronze Lid	TS13-1DA-AKG-2	
2"	Reclaim Flat Glass CF Register w/Bronze Lid	TS13-2DA-AKG-2	
2"	Reclaim DIALOG USG Register w/Bronze Lid	TS13-1RM-AKG-2	
2"	Reclaim DIALOG CF Register w/Bronze Lid	TS13-2RM-AKG-2	
2"	Reclaim DIALOG USG Register w/DIALOG Module w/ReadPad	TS13-1RU-AKG-2	
2"	Reclaim DIALOG CF Register w/DIALOG Module w/ReadPad	TS13-2RU-AKG-2	

OVAL METER FLANGES PER PAIR

2"	Oval Bronze Meter Flanges w/Gasket & Bolts (Price per pair)	FLG-2 OBR	
2"	Oval Cast Iron Meter Flanges w/Gasket & Bolts (Price per pair)	FLG-2 OCI	

Note: The US Gallon and Cubic Feet registers are identified above by the letters USG and CF.

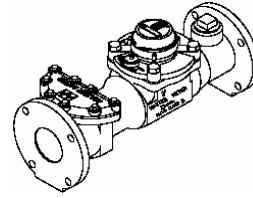


BRONZE BODY TURBINE METERS WITH INTEGRAL STRAINER

3" MMT-S BRONZE BODY TURBINE

Size	Register	Part Number	
DIALOG REGISTERS AND ELECTRONICS			
3"	DIALOG USG Register w/Bronze Lid	TS14-1BM-AKA-2	
3"	DIALOG CF Register w/Bronze Lid	TS14-2BM-AKA-2	
3"	DIALOG USG Register w/DIALOG Module w/ReadPad	TS14-1BU-AKA-2	
3"	DIALOG CF Register w/DIALOG Module w/ReadPad	TS14-2BU-AKA-2	
3"	DIALOG USG Register w/Dual Switch Module	TS14-1BN-AKA-2	
3"	DIALOG CF Register w/Dual Switch Module	TS14-2BN-AKA-2	
3"	DIALOG USG Register w/Single Switch Module	TS14-1BP-AKA-2	
3"	DIALOG CF Register w/Single Switch Module	TS14-2BP-AKA-2	
CONTACT HEAD REGISTERS			
3"	Contact Head USG Register & Reed Switch Assembly 10 Gal. Pulse	TS14-1CI-AKA-2	
3"	Contact Head USG Register & Reed Switch Assembly 100 Gal. Pulse	TS14-1CJ-AKA-2	
3"	Contact Head USG Register & Reed Switch Assembly 1000 Gal. Pulse	TS14-1CK-AKA-2	
3"	Contact Head USG Register w/Dual Electrical Output 10 Gal. Pulse	TS14-1II-AKA-2	
3"	Contact Head USG Register w/Dual Electrical Output 100 Gal. Pulse	TS14-1IJ-AKA-2	
3"	Contact Head USG Register w/Dual Electrical Output 1000 Gal. Pulse	TS14-1IK-AKA-2	
<i>Note: Contact head registers can be supplied in Cubic Feet. Contact Master Meter for proper part number.</i>			
RATE OF FLOW REGISTERS			
3"	Rate of Flow Register	TS14-1HA-AKA-2	
RECLAIM REGISTERS			
3"	Reclaim Flat Glass USG Register w/Bronze Lid	TS14-1DA-AKA-2	
3"	Reclaim Flat Glass CF Register w/Bronze Lid	TS14-2DA-AKA-2	
3"	Reclaim DIALOG USG Register w/Bronze Lid	TS14-1RM-AKA-2	
3"	Reclaim DIALOG CF Register w/Bronze Lid	TS14-2RM-AKA-2	
3"	Reclaim DIALOG USG Register w/DIALOG Module w/ReadPad	TS14-1RU-AKA-2	
3"	Reclaim DIALOG CF Register w/DIALOG Module w/ReadPad	TS14-2RU-AKA-2	
METER FLANGES PER PAIR			
3"	Round Cast Iron Meter Flanges w/Gasket & Bolts (Price per pair)	FLG-3	

Note: The US Gallon and Cubic Feet registers are identified above by the letters USG and CF.



BRONZE BODY TURBINE METERS WITH INTEGRAL STRAINER

4" MMT-S BRONZE BODY TURBINE

Size	Register	Part Number
------	----------	-------------

DIALOG REGISTERS AND ELECTRONICS

4"	DIALOG USG Register w/Bronze Lid	TS15-1BM-AKA-2
4"	DIALOG CF Register w/Bronze Lid	TS15-2BM-AKA-2
4"	DIALOG USG Register w/DIALOG Module w/ReadPad	TS15-1BU-AKA-2
4"	DIALOG CF Register w/DIALOG Module w/ReadPad	TS15-2BU-AKA-2
4"	DIALOG USG Register w/Dual Switch Module	TS15-1BN-AKA-2
4"	DIALOG CF Register w/Dual Switch Module	TS15-2BN-AKA-2
4"	DIALOG USG Register w/Single Switch Module	TS15-1BP-AKA-2
4"	DIALOG CF Register w/Single Switch Module	TS15-2BP-AKA-2

CONTACT HEAD REGISTERS

4"	Contact Head USG Register & Reed Switch Assembly 10 Gal. Pulse	TS15-1CI-AKA-2
4"	Contact Head USG Register & Reed Switch Assembly 100 Gal. Pulse	TS15-1CJ-AKA-2
4"	Contact Head USG Register & Reed Switch Assembly 1000 Gal. Pulse	TS15-1CK-AKA-2
4"	Contact Head USG Register w/Dual Electrical Output 10 Gal. Pulse	TS15-1II-AKA-2
4"	Contact Head USG Register w/Dual Electrical Output 100 Gal. Pulse	TS15-1IJ-AKA-2
4"	Contact Head USG Register w/Dual Electrical Output 1000 Gal. Pulse	TS15-1IK-AKA-2

Note: Contact head registers can be supplied in Cubic Feet. Contact Master Meter for proper part number.

RATE OF FLOW REGISTERS

4"	Rate of Flow Register	TS15-1HA-AKA-2
----	-----------------------	----------------

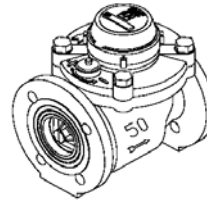
RECLAIM REGISTERS

4"	Reclaim Flat Glass USG Register w/Bronze Lid	TS15-1DA-AKA-2
4"	Reclaim Flat Glass CF Register w/Bronze Lid	TS15-2DA-AKA-2
4"	Reclaim DIALOG USG Register w/Bronze Lid	TS15-1RM-AKA-2
4"	Reclaim DIALOG CF Register w/Bronze Lid	TS15-2RM-AKA-2
4"	Reclaim DIALOG USG Register w/DIALOG Module w/ReadPad	TS15-1RU-AKA-2
4"	Reclaim DIALOG CF Register w/DIALOG Module w/ReadPad	TS15-2RU-AKA-2

METER FLANGES PER PAIR

4"	Round Cast Iron Meter Flanges w/Gasket & Bolts (Price per pair)	FLG-4
----	---	-------

Note: The US Gallon and Cubic Feet registers are identified above by the letters USG and CF.



CAST IRON EPOXY COATED BODY TURBINE METERS

2" WT CAST IRON BODY TURBINE

Size	Register	Part Number
------	----------	-------------

DIALOG REGISTERS AND ELECTRONICS

2"	DIALOG USG Register w/Bronze Lid	WT13-1BM-JAA-1
2"	DIALOG CF Register w/Bronze Lid	WT13-2BM-JAA-1
2"	DIALOG USG Register w/DIALOG Module w/ReadPad	WT13-1BU-JAA-1
2"	DIALOG CF Register w/DIALOG Module w/ReadPad	WT13-2BU-JAA-1
2"	DIALOG USG Register w/Dual Switch Module	WT13-1BN-JAA-1
2"	DIALOG CF Register w/Dual Switch Module	WT13-2BN-JAA-1
2"	DIALOG USG Register w/Single Switch Module	WT13-1BP-JAA-1
2"	DIALOG CF Register w/Single Switch Module	WT13-2BP-JAA-1

CONTACT HEAD REGISTERS

2"	Contact Head USG Register & Reed Switch Assembly 10 Gal. Pulse	WT13-1CI-JAA-1
2"	Contact Head USG Register & Reed Switch Assembly 100 Gal. Pulse	WT13-1CJ-JAA-1
2"	Contact Head USG Register & Reed Switch Assembly 1000 Gal. Pulse	WT13-1CK-JAA-1
2"	Contact Head USG Register w/Dual Electrical Output 10 Gal. Pulse	WT13-1II-JAA-1
2"	Contact Head USG Register w/Dual Electrical Output 100 Gal. Pulse	WT13-1IJ-JAA-1
2"	Contact Head USG Register w/Dual Electrical Output 1000 Gal. Pulse	WT13-1IK-JAA-1

Note: Contact head registers can be supplied in Cubic Feet. Contact Master Meter for proper part number.

RATE OF FLOW REGISTERS

2"	Rate of Flow Register	WT13-1HA-JAA-1
----	-----------------------	----------------

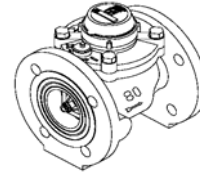
RECLAIM REGISTERS

2"	Reclaim Flat Glass USG Register w/Bronze Lid	WT13-1DA-JAA-1
2"	Reclaim Flat Glass CF Register w/Bronze Lid	WT13-2DA-JAA-1
2"	Reclaim DIALOG USG Register w/Bronze Lid	WT13-1RM-JAA-1
2"	Reclaim DIALOG CF Register w/Bronze Lid	WT13-2RM-JAA-1
2"	Reclaim DIALOG USG Register w/DIALOG Module w/ReadPad	WT13-1RU-JAA-1
2"	Reclaim DIALOG CF Register w/DIALOG Module w/ReadPad	WT13-2RU-JAA-1

METER FLANGES PER PAIR

2"	Round Cast Iron Meter Flanges w/Gasket & Bolts (Price per pair)	FLG-2 RCI
----	---	-----------

Note: The US Gallon and Cubic Feet registers are identified above by the letters USG and CF.

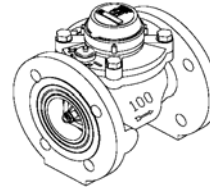


CAST IRON EPOXY COATED BODY TURBINE METERS

3" WT CAST IRON BODY TURBINE

Size	Register	Part Number	
DIALOG REGISTERS AND ELECTRONICS			
3"	DIALOG USG Register w/Bronze Lid	WT14-1BM-JAA-1	
3"	DIALOG CF Register w/Bronze Lid	WT14-2BM-JAA-1	
3"	DIALOG USG Register w/DIALOG Module w/ReadPad	WT14-1BU-JAA-1	
3"	DIALOG CF Register w/DIALOG Module w/ReadPad	WT14-2BU-JAA-1	
3"	DIALOG USG Register w/Dual Switch Module	WT14-1BN-JAA-1	
3"	DIALOG CF Register w/Dual Switch Module	WT14-2BN-JAA-1	
3"	DIALOG USG Register w/Single Switch Module	WT14-1BP-JAA-1	
3"	DIALOG CF Register w/Single Switch Module	WT14-2BP-JAA-1	
CONTACT HEAD REGISTERS			
3"	Contact Head USG Register & Reed Switch Assembly 10 Gal. Pulse	WT14-1CI-JAA-1	
3"	Contact Head USG Register & Reed Switch Assembly 100 Gal. Pulse	WT14-1CJ-JAA-1	
3"	Contact Head USG Register & Reed Switch Assembly 1000 Gal. Pulse	WT14-1CK-JAA-1	
3"	Contact Head USG Register w/Dual Electrical Output 10 Gal. Pulse	WT14-1II-JAA-1	
3"	Contact Head USG Register w/Dual Electrical Output 100 Gal. Pulse	WT14-1IJ-JAA-1	
3"	Contact Head USG Register w/Dual Electrical Output 1000 Gal. Pulse	WT14-1IK-JAA-1	
<i>Note: Contact head registers can be supplied in Cubic Feet. Contact Master Meter for proper part number.</i>			
RATE OF FLOW REGISTERS			
3"	Rate of Flow Register	WT14-1HA-JAA-1	
RECLAIM REGISTERS			
3"	Reclaim Flat Glass USG Register w/Bronze Lid	WT14-1DA-JAA-1	
3"	Reclaim Flat Glass CF Register w/Bronze Lid	WT14-2DA-JAA-1	
3"	Reclaim DIALOG USG Register w/Bronze Lid	WT14-1RM-JAA-1	
3"	Reclaim DIALOG CF Register w/Bronze Lid	WT14-2RM-JAA-1	
3"	Reclaim DIALOG USG Register w/DIALOG Module w/ReadPad	WT14-1RU-JAA-1	
3"	Reclaim DIALOG CF Register w/DIALOG Module w/ReadPad	WT14-2RU-JAA-1	
METER FLANGES PER PAIR			
3"	Round Cast Iron Meter Flanges w/Gasket & Bolts (Price per pair)	FLG-3	
STRAINERS			
3"	Bronze Strainer When Purchased w/ Meter (6" length)	907 300 TSA	
3"	Bronze Strainer When Purchased Separate (6" length)	907 300 TSA	

Note: The US Gallon and Cubic Feet registers are identified above by the letters USG and CF.



CAST IRON EPOXY COATED BODY TURBINE METERS

4" WT CAST IRON BODY TURBINE

Size	Register	Part Number	
------	----------	-------------	--

DIALOG REGISTERS AND ELECTRONICS

4"	DIALOG USG Register w/Bronze Lid	WT15-1BM-JAA-1	
4"	DIALOG CF Register w/Bronze Lid	WT15-2BM-JAA-1	
4"	DIALOG USG Register w/DIALOG Module w/ReadPad	WT15-1BU-JAA-1	
4"	DIALOG CF Register w/DIALOG Module w/ReadPad	WT15-2BU-JAA-1	
4"	DIALOG USG Register w/Dual Switch Module	WT15-1BN-JAA-1	
4"	DIALOG CF Register w/Dual Switch Module	WT15-2BN-JAA-1	
4"	DIALOG USG Register w/Single Switch Module	WT15-1BP-JAA-1	
4"	DIALOG CF Register w/Single Switch Module	WT15-2BP-JAA-1	

CONTACT HEAD REGISTERS

4"	Contact Head USG Register & Reed Switch Assembly 10 Gal. Pulse	WT15-1CI-JAA-1	
4"	Contact Head USG Register & Reed Switch Assembly 100 Gal. Pulse	WT15-1CJ-JAA-1	
4"	Contact Head USG Register & Reed Switch Assembly 1000 Gal. Pulse	WT15-1CK-JAA-1	
4"	Contact Head USG Register w/Dual Electrical Output 10 Gal. Pulse	WT15-1II-JAA-1	
4"	Contact Head USG Register w/Dual Electrical Output 100 Gal. Pulse	WT15-1IJ-JAA-1	
4"	Contact Head USG Register w/Dual Electrical Output 1000 Gal. Pulse	WT15-1IK-JAA-1	

Note: Contact head registers can be supplied in Cubic Feet. Contact Master Meter for proper part number.

RATE OF FLOW REGISTERS

4"	Rate of Flow Register	WT15-1HA-JAA-1	
----	-----------------------	----------------	--

RECLAIM REGISTERS

4"	Reclaim Flat Glass USG Register w/Bronze Lid	WT15-1DA-JAA-1	
4"	Reclaim Flat Glass CF Register w/Bronze Lid	WT15-2DA-JAA-1	
4"	Reclaim DIALOG USG Register w/Bronze Lid	WT15-1RM-JAA-1	
4"	Reclaim DIALOG CF Register w/Bronze Lid	WT15-2RM-JAA-1	
4"	Reclaim DIALOG USG Register w/DIALOG Module w/ReadPad	WT15-1RU-JAA-1	
4"	Reclaim DIALOG CF Register w/DIALOG Module w/ReadPad	WT15-2RU-JAA-1	

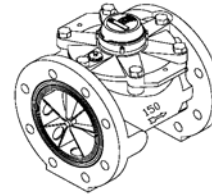
METER FLANGES PER PAIR

4"	Round Cast Iron Meter Flanges w/Gasket & Bolts (Price per pair)	FLG-4	
----	---	-------	--

STRAINERS

4"	Bronze Strainer When Purchased w/ Meter (7-1/2" length)	907 400 TSA	
4"	Bronze Strainer When Purchased Separate (7-1/2" length)	907 400 TSA	

Note: The US Gallon and Cubic Feet registers are identified above by the letters USG and CF.

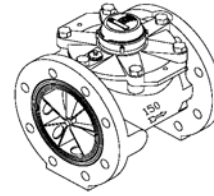


CAST IRON EPOXY COATED BODY TURBINE METERS

6" WT CAST IRON BODY TURBINE

Size	Register	Part Number	
DIALOG REGISTERS AND ELECTRONICS			
6"	DIALOG USG Register w/Bronze Lid	WT16-1BM-JAA-1	
6"	DIALOG CF Register w/Bronze Lid	WT16-2BM-JAA-1	
6"	DIALOG USG Register w/DIALOG Module w/ReadPad	WT16-1BU-JAA-1	
6"	DIALOG CF Register w/DIALOG Module w/ReadPad	WT16-2BU-JAA-1	
6"	DIALOG USG Register w/Dual Switch Module	WT16-1BN-JAA-1	
6"	DIALOG CF Register w/Dual Switch Module	WT16-2BN-JAA-1	
6"	DIALOG USG Register w/Single Switch Module	WT16-1BP-JAA-1	
6"	DIALOG CF Register w/Single Switch Module	WT16-2BP-JAA-1	
CONTACT HEAD REGISTERS			
6"	Contact Head USG Register & Reed Switch Assembly 100 Gal. Pulse	WT16-1CJ-JAA-1	
6"	Contact Head USG Register & Reed Switch Assembly 1000 Gal. Pulse	WT16-1CK-JAA-1	
6"	Contact Head USG Register & Reed Switch Assembly 10000 Gal. Pulse	WT16-1CL-JAA-1	
6"	Contact Head USG Register w/Dual Electrical Output 100 Gal. Pulse	WT16-1IJ-JAA-1	
6"	Contact Head USG Register w/Dual Electrical Output 1000 Gal. Pulse	WT16-1IK-JAA-1	
6"	Contact Head USG Register w/Dual Electrical Output 10000 Gal. Pulse	WT16-1IL-JAA-1	
<i>Note: Contact head registers can be supplied in Cubic Feet. Contact Master Meter for proper part number.</i>			
RATE OF FLOW REGISTERS			
6"	Rate of Flow Register	WT16-1HA-JAA-1	
RECLAIM REGISTERS			
6"	Reclaim Flat Glass USG Register w/Bronze Lid	WT16-1DA-JAA-1	
6"	Reclaim Flat Glass CF Register w/Bronze Lid	WT16-2DA-JAA-1	
6"	Reclaim DIALOG USG Register w/Bronze Lid	WT16-1RM-JAA-1	
6"	Reclaim DIALOG CF Register w/Bronze Lid	WT16-2RM-JAA-1	
6"	Reclaim DIALOG USG Register w/DIALOG Module w/ReadPad	WT16-1RU-JAA-1	
6"	Reclaim DIALOG CF Register w/DIALOG Module w/ReadPad	WT16-2RU-JAA-1	
METER FLANGES PER PAIR			
6"	Round Cast Iron Meter Flanges w/Gasket & Bolts (Price per pair)	FLG-6	
STRAINERS			
6"	Bronze Strainer When Purchased w/ Meter (8-15/16" length)	907 600 TSA	
6"	Bronze Strainer When Purchased Separate (8-15/16" length)	907 600 TSA	

Note: The US Gallon and Cubic Feet registers are identified above by the letters USG and CF.

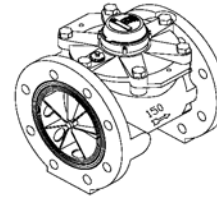


CAST IRON EPOXY COATED BODY TURBINE METERS

8" WT CAST IRON BODY TURBINE

Size	Register	Part Number	
DIALOG REGISTERS AND ELECTRONICS			
8"	DIALOG USG Register w/Bronze Lid	WT17-1BM-JAA-1	
8"	DIALOG CF Register w/Bronze Lid	WT17-2BM-JAA-1	
8"	DIALOG USG Register w/DIALOG Module w/ReadPad	WT17-1BU-JAA-1	
8"	DIALOG CF Register w/DIALOG Module w/ReadPad	WT17-2BU-JAA-1	
8"	DIALOG USG Register w/Dual Switch Module	WT17-1BN-JAA-1	
8"	DIALOG CF Register w/Dual Switch Module	WT17-2BN-JAA-1	
8"	DIALOG USG Register w/Single Switch Module	WT17-1BP-JAA-1	
8"	DIALOG CF Register w/Single Switch Module	WT17-2BP-JAA-1	
CONTACT HEAD REGISTERS			
8"	Contact Head USG Register & Reed Switch Assembly 100 Gal. Pulse	WT17-1CJ-JAA-1	
8"	Contact Head USG Register & Reed Switch Assembly 1000 Gal. Pulse	WT17-1CK-JAA-1	
8"	Contact Head USG Register & Reed Switch Assembly 10000 Gal. Pulse	WT17-1CL-JAA-1	
8"	Contact Head USG Register w/Dual Electrical Output 100 Gal. Pulse	WT17-1IJ-JAA-1	
8"	Contact Head USG Register w/Dual Electrical Output 1000 Gal. Pulse	WT17-1IK-JAA-1	
8"	Contact Head USG Register w/Dual Electrical Output 10000 Gal. Pulse	WT17-1IL-JAA-1	
<i>Note: Contact head registers can be supplied in Cubic Feet. Contact Master Meter for proper part number.</i>			
RATE OF FLOW REGISTERS			
8"	Rate of Flow Register	WT17-1HA-JAA-1	
RECLAIM REGISTERS			
8"	Reclaim Flat Glass USG Register w/Bronze Lid	WT17-1DA-JAA-1	
8"	Reclaim Flat Glass CF Register w/Bronze Lid	WT17-2DA-JAA-1	
8"	Reclaim DIALOG USG Register w/Bronze Lid	WT17-1RM-JAA-1	
8"	Reclaim DIALOG CF Register w/Bronze Lid	WT17-2RM-JAA-1	
8"	Reclaim DIALOG USG Register w/DIALOG Module w/ReadPad	WT17-1RU-JAA-1	
8"	Reclaim DIALOG CF Register w/DIALOG Module w/ReadPad	WT17-2RU-JAA-1	
METER FLANGES PER PAIR			
8"	Round Cast Iron Meter Flanges w/Gasket & Bolts (Price per pair)	FLG-8	
STRAINERS			
8"	Cast Iron Strainer When Purchased w/ Meter	907 800 TS	
8"	Cast Iron Strainer When Purchased Separate	907 800 TS	

Note: The US Gallon and Cubic Feet registers are identified above by the letters USG and CF.



CAST IRON EPOXY COATED BODY TURBINE METERS

10" WT CAST IRON BODY TURBINE

Size	Register	Part Number	
------	----------	-------------	--

Size	Register	Part Number	
DIALOG REGISTERS AND ELECTRONICS			
10"	DIALOG USG Register w/Bronze Lid	WT18-1BM-JAA-1	
10"	DIALOG CF Register w/Bronze Lid	WT18-2BM-JAA-1	
10"	DIALOG USG Register w/DIALOG Module w/ReadPad	WT18-1BU-JAA-1	
10"	DIALOG CF Register w/DIALOG Module w/ReadPad	WT18-2BU-JAA-1	
10"	DIALOG USG Register w/Dual Switch Module	WT18-1BN-JAA-1	
10"	DIALOG CF Register w/Dual Switch Module	WT18-2BN-JAA-1	
10"	DIALOG USG Register w/Single Switch Module	WT18-1BP-JAA-1	
10"	DIALOG CF Register w/Single Switch Module	WT18-2BP-JAA-1	

CONTACT HEAD REGISTERS			
10"	Contact Head USG Register & Reed Switch Assembly 1000 Gal. Pulse	WT18-1CK-JAA-1	
10"	Contact Head USG Register & Reed Switch Assembly 10000 Gal. Pulse	WT18-1CL-JAA-1	
10"	Contact Head USG Register & Reed Switch Assembly 100000 Gal. Pulse	N/A	
10"	Contact Head USG Register w/Dual Electrical Output 1000 Gal. Pulse	WT18-1IK-JAA-1	
10"	Contact Head USG Register w/Dual Electrical Output 10000 Gal. Pulse	WT18-1IL-JAA-1	
10"	Contact Head USG Register w/Dual Electrical Output 100000 Gal. Pulse	N/A	

Note: Contact head registers can be supplied in Cubic Feet. Contact Master Meter for proper part number.

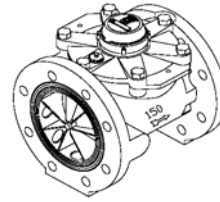
RATE OF FLOW REGISTERS			
10"	Rate of Flow Register	WT18-1HA-JAA-1	

RECLAIM REGISTERS			
10"	Reclaim Flat Glass USG Register w/Bronze Lid	WT18-1DA-JAA-1	
10"	Reclaim Flat Glass CF Register w/Bronze Lid	WT18-2DA-JAA-1	
10"	Reclaim DIALOG USG Register w/Bronze Lid	WT18-1RM-JAA-1	
10"	Reclaim DIALOG CF Register w/Bronze Lid	WT18-2RM-JAA-1	
10"	Reclaim DIALOG USG Register w/DIALOG Module w/ReadPad	WT18-1RU-JAA-1	
10"	Reclaim DIALOG CF Register w/DIALOG Module w/ReadPad	WT18-2RU-JAA-1	

METER FLANGES PER PAIR			
10"	Round Cast Iron Meter Flanges w/Gasket & Bolts (Price per pair)	N/A	

STRAINERS			
10"	Cast Iron Strainer When Purchased w/ Meter (6" length)	907 900 TS	
10"	Cast Iron Strainer When Purchased Separate (6" length)	907 900 TS	

Note: The US Gallon and Cubic Feet registers are identified above by the letters USG and CF.



CAST IRON EPOXY COATED BODY TURBINE METERS

12" WT CAST IRON BODY TURBINE

Size	Register	Part Number	
------	----------	-------------	--

DIALOG REGISTERS AND ELECTRONICS

12"	DIALOG USG Register w/Bronze Lid	WT19-1BM-JAA-1	
12"	DIALOG CF Register w/Bronze Lid	WT19-2BM-JAA-1	
12"	DIALOG USG Register w/DIALOG Module w/ReadPad	WT19-1BU-JAA-1	
12"	DIALOG CF Register w/DIALOG Module w/ReadPad	WT19-2BU-JAA-1	
12"	DIALOG USG Register w/Dual Switch Module	WT19-1BN-JAA-1	
12"	DIALOG CF Register w/Dual Switch Module	WT19-2BN-JAA-1	
12"	DIALOG USG Register w/Single Switch Module	WT19-1BP-JAA-1	
12"	DIALOG CF Register w/Single Switch Module	WT19-2BP-JAA-1	

CONTACT HEAD REGISTERS

12"	Contact Head USG Register & Reed Switch Assembly 1000 Gal. Pulse	WT19-1CK-JAA-1	
12"	Contact Head USG Register & Reed Switch Assembly 10000 Gal. Pulse	WT19-1CL-JAA-1	
12"	Contact Head USG Register & Reed Switch Assembly 100000 Gal. Pulse	N/A	
12"	Contact Head USG Register w/Dual Electrical Output 1000 Gal. Pulse	WT19-1IK-JAA-1	
12"	Contact Head USG Register w/Dual Electrical Output 10000 Gal. Pulse	WT19-1IL-JAA-1	
12"	Contact Head USG Register w/Dual Electrical Output 100000 Gal. Pulse	N/A	

Note: Contact head registers can be supplied in Cubic Feet. Contact Master Meter for proper part number.

RATE OF FLOW REGISTERS

12"	Rate of Flow Register	WT19-1HA-JAA-1	
-----	-----------------------	----------------	--

RECLAIM REGISTERS

12"	Reclaim Flat Glass USG Register w/Bronze Lid	WT19-1DA-JAA-1	
12"	Reclaim Flat Glass CF Register w/Bronze Lid	WT19-2DA-JAA-1	
12"	Reclaim DIALOG USG Register w/Bronze Lid	WT19-1RM-JAA-1	
12"	Reclaim DIALOG CF Register w/Bronze Lid	WT19-2RM-JAA-1	
12"	Reclaim DIALOG USG Register w/DIALOG Module w/ReadPad	WT19-1RU-JAA-1	
12"	Reclaim DIALOG CF Register w/DIALOG Module w/ReadPad	WT19-2RU-JAA-1	

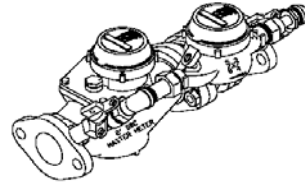
METER FLANGES PER PAIR

12"	Round Cast Iron Meter Flanges w/Gasket & Bolts (Price per pair)	N/A	
-----	---	-----	--

STRAINERS

12"	Cast Iron Strainer When Purchased w/ Meter (6" length)	907 910 TS	
12"	Cast Iron Strainer When Purchased Separate (6" length)	907 910 TS	

Note: The US Gallon and Cubic Feet registers are identified above by the letters USG and CF.

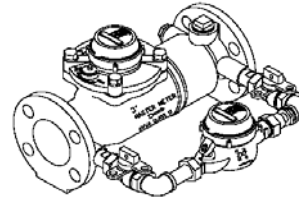


DUAL BODY COMPOUND METERS

2" DUAL BODY COMPOUND METER "BRONZE BODY"

Size	Register	Part Number	
DIALOG REGISTERS AND ELECTRONICS			
2"	DIALOG USG Register w/Bronze Lid	DC13-1BM-AAG-2	
2"	DIALOG CF Register w/Bronze Lid	DC13-2BM-AAG-2	
2"	DIALOG USG Register w/DIALOG Module w/ReadPad	DC13-1BU-AAG-2	
2"	DIALOG CF Register w/DIALOG Module w/ReadPad	DC13-2BU-AAG-2	
2"	DIALOG USG Register w/Dual Switch Module	DC13-1BN-AAG-2	
2"	DIALOG CF Register w/Dual Switch Module	DC13-2BN-AAG-2	
2"	DIALOG USG Register w/Single Switch Module	DC13-1BP-AAG-2	
2"	DIALOG CF Register w/Single Switch Module	DC13-2BP-AAG-2	
CONTACT HEAD REGISTERS			
2"	Contact Head USG Register & Reed Switch Assembly 10 Gal. Pulse	DC13-1CI-AAG-2	
2"	Contact Head USG Register & Reed Switch Assembly 100 Gal. Pulse	DC13-1CJ-AAG-2	
2"	Contact Head USG Register & Reed Switch Assembly 1000 Gal. Pulse	DC13-1CK-AAG-2	
2"	Contact Head USG Register w/Dual Electrical Output 10 Gal. Pulse	DC13-1II-AAG-2	
2"	Contact Head USG Register w/Dual Electrical Output 100 Gal. Pulse	DC13-1IJ-AAG-2	
2"	Contact Head USG Register w/Dual Electrical Output 1000 Gal. Pulse	DC13-1IK-AAG-2	
<i>Note: Contact head registers can be supplied in Cubic Feet. Contact Master Meter for proper part number.</i>			
RATE OF FLOW REGISTERS			
2"	Rate of Flow Register	DC13-1HA-AAG-2	
RECLAIM REGISTERS			
2"	Reclaim Flat Glass USG Register w/Bronze Lid	DC13-1DA-AAG-2	
2"	Reclaim Flat Glass CF Register w/Bronze Lid	DC13-2DA-AAG-2	
2"	Reclaim DIALOG USG Register w/Bronze Lid	DC13-1RM-AAG-2	
2"	Reclaim DIALOG CF Register w/Bronze Lid	DC13-2RM-AAG-2	
2"	Reclaim DIALOG USG Register w/DIALOG Module w/ReadPad	DC13-1RU-AAG-2	
2"	Reclaim DIALOG CF Register w/DIALOG Module w/ReadPad	DC13-2RU-AAG-2	
OVAL METER FLANGES PER PAIR			
2"	Oval Bronze Meter Flanges w/Gasket & Bolts (Price per pair)	FLG-2 OBR	
2"	Oval Cast Iron Meter Flanges w/Gasket & Bolts (Price per pair)	FLG-2 OCI	
STRAINERS			
2"	Bronze Strainer When Purchased w/ Meter (7" length)	907 200 TSA	
2"	Bronze Strainer When Purchased Separate (7" length)	907 200 TSA	

Note: The US Gallon and Cubic Feet registers are identified above by the letters USG and CF.

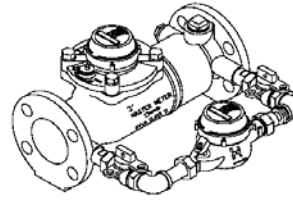


DUAL BODY COMPOUND METERS

3" DUAL BODY COMPOUND METER "BRONZE BODY"

Size	Register	Part Number	
DIALOG REGISTERS AND ELECTRONICS			
3"	DIALOG USG Register w/Bronze Lid	DC14-1BM-AAA-2	
3"	DIALOG CF Register w/Bronze Lid	DC14-2BM-AAA-2	
3"	DIALOG USG Register w/DIALOG Module w/ReadPad	DC14-1BU-AAA-2	
3"	DIALOG CF Register w/DIALOG Module w/ReadPad	DC14-2BU-AAA-2	
3"	DIALOG USG Register w/Dual Switch Module	DC14-1BN-AAA-2	
3"	DIALOG CF Register w/Dual Switch Module	DC14-2BN-AAA-2	
3"	DIALOG USG Register w/Single Switch Module	DC14-1BP-AAA-2	
3"	DIALOG CF Register w/Single Switch Module	DC14-2BP-AAA-2	
CONTACT HEAD REGISTERS			
3"	Contact Head USG Register & Reed Switch Assembly 10 Gal. Pulse	DC14-1CI-AAA-2	
3"	Contact Head USG Register & Reed Switch Assembly 100 Gal. Pulse	DC14-1CJ-AAA-2	
3"	Contact Head USG Register & Reed Switch Assembly 1000 Gal. Pulse	DC14-1CK-AAA-2	
3"	Contact Head USG Register w/Dual Electrical Output 10 Gal. Pulse	DC14-1II-AAA-2	
3"	Contact Head USG Register w/Dual Electrical Output 100 Gal. Pulse	DC14-1IJ-AAA-2	
3"	Contact Head USG Register w/Dual Electrical Output 1000 Gal. Pulse	DC14-1IK-AAA-2	
<i>Note: Contact head registers can be supplied in Cubic Feet. Contact Master Meter for proper part number.</i>			
RATE OF FLOW REGISTERS			
3"	Rate of Flow Register	DC14-1HA-AAA-2	
RECLAIM REGISTERS			
3"	Reclaim Flat Glass USG Register w/Bronze Lid	DC14-1DA-AAA-2	
3"	Reclaim Flat Glass CF Register w/Bronze Lid	DC14-2DA-AAA-2	
3"	Reclaim DIALOG USG Register w/Bronze Lid	DC14-1RM-AAA-2	
3"	Reclaim DIALOG CF Register w/Bronze Lid	DC14-2RM-AAA-2	
3"	Reclaim DIALOG USG Register w/DIALOG Module w/ReadPad	DC14-1RU-AAA-2	
3"	Reclaim DIALOG CF Register w/DIALOG Module w/ReadPad	DC14-2RU-AAA-2	
METER FLANGES PER PAIR			
3"	Round Cast Iron Meter Flanges w/Gasket & Bolts (Price per pair)	FLG-3	
STRAINERS			
3"	Bronze Strainer When Purchased w/ Meter (6" length)	907 300 TSA	
3"	Bronze Strainer When Purchased Separate (6" length)	907 300 TSA	

Note: The US Gallon and Cubic Feet registers are identified above by the letters USG and CF.

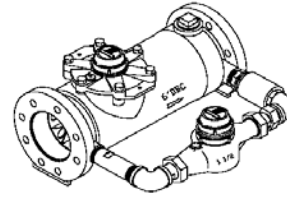


DUAL BODY COMPOUND METERS

4" DUAL BODY COMPOUND METER "BRONZE BODY"

Size	Register	Part Number	
DIALOG REGISTERS AND ELECTRONICS			
4"	DIALOG USG Register w/Bronze Lid	DC15-1BM-AAA-2	
4"	DIALOG CF Register w/Bronze Lid	DC15-2BM-AAA-2	
4"	DIALOG USG Register w/DIALOG Module w/ReadPad	DC15-1BU-AAA-2	
4"	DIALOG CF Register w/DIALOG Module w/ReadPad	DC15-2BU-AAA-2	
4"	DIALOG USG Register w/Dual Switch Module	DC15-1BN-AAA-2	
4"	DIALOG CF Register w/Dual Switch Module	DC15-2BN-AAA-2	
4"	DIALOG USG Register w/Single Switch Module	DC15-1BP-AAA-2	
4"	DIALOG CF Register w/Single Switch Module	DC15-2BP-AAA-2	
CONTACT HEAD REGISTERS			
4"	Contact Head USG Register & Reed Switch Assembly 10 Gal. Pulse	DC15-1CI-AAA-2	
4"	Contact Head USG Register & Reed Switch Assembly 100 Gal. Pulse	DC15-1CJ-AAA-2	
4"	Contact Head USG Register & Reed Switch Assembly 1000 Gal. Pulse	DC15-1CK-AAA-2	
4"	Contact Head USG Register w/Dual Electrical Output 10 Gal. Pulse	DC15-1II-AAA-2	
4"	Contact Head USG Register w/Dual Electrical Output 100 Gal. Pulse	DC15-1IJ-AAA-2	
4"	Contact Head USG Register w/Dual Electrical Output 1000 Gal. Pulse	DC15-1IK-AAA-2	
<i>Note: Contact head registers can be supplied in Cubic Feet. Contact Master Meter for proper part number.</i>			
RATE OF FLOW REGISTERS			
4"	Rate of Flow Register	DC15-1HA-AAA-2	
RECLAIM REGISTERS			
4"	Reclaim Flat Glass USG Register w/Bronze Lid	DC15-1DA-AAA-2	
4"	Reclaim Flat Glass CF Register w/Bronze Lid	DC15-2DA-AAA-2	
4"	Reclaim DIALOG USG Register w/Bronze Lid	DC15-1RM-AAA-2	
4"	Reclaim DIALOG CF Register w/Bronze Lid	DC15-2RM-AAA-2	
4"	Reclaim DIALOG USG Register w/DIALOG Module w/ReadPad	DC15-1RU-AAA-2	
4"	Reclaim DIALOG CF Register w/DIALOG Module w/ReadPad	DC15-2RU-AAA-2	
METER FLANGES PER PAIR			
4"	Round Cast Iron Meter Flanges w/Gasket & Bolts (Price per pair)	FLG-4	
STRAINERS			
4"	Bronze Strainer When Purchased w/ Meter (7-1/2" length)	907 400 TSA	
4"	Bronze Strainer When Purchased Separate (7-1/2" length)	907 400 TSA	

Note: The US Gallon and Cubic Feet registers are identified above by the letters USG and CF.



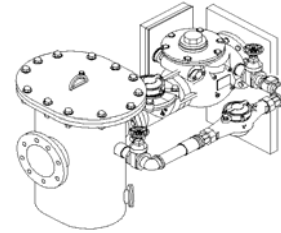
DUAL BODY COMPOUND METERS

6" DUAL BODY COMPOUND METER "BRONZE BODY"

Size	Register	Part Number	
DIALOG REGISTERS AND ELECTRONICS			
6"	DIALOG USG Register w/Bronze Lid	DC16-1BM-AAA-2	
6"	DIALOG CF Register w/Bronze Lid	DC16-2BM-AAA-2	
6"	DIALOG USG Register w/DIALOG Module w/ReadPad	DC16-1BU-AAA-2	
6"	DIALOG CF Register w/DIALOG Module w/ReadPad	DC16-2BU-AAA-2	
6"	DIALOG USG Register w/Dual Switch Module	DC16-1BN-AAA-2	
6"	DIALOG CF Register w/Dual Switch Module	DC16-2BN-AAA-2	
6"	DIALOG USG Register w/Single Switch Module	DC16-1BP-AAA-2	
6"	DIALOG CF Register w/Single Switch Module	DC16-2BP-AAA-2	
CONTACT HEAD REGISTERS			
6"	Contact Head USG Register & Reed Switch Assembly 10 Gal. Pulse	CONTACT MM	
6"	Contact Head USG Register & Reed Switch Assembly 100 Gal. Pulse	CONTACT MM	
6"	Contact Head USG Register & Reed Switch Assembly 1000 Gal. Pulse	CONTACT MM	
6"	Contact Head USG Register w/Dual Electrical Output 10 Gal. Pulse	CONTACT MM	
6"	Contact Head USG Register w/Dual Electrical Output 100 Gal. Pulse	CONTACT MM	
6"	Contact Head USG Register w/Dual Electrical Output 1000 Gal. Pulse	CONTACT MM	
<i>Note: Contact head registers can be supplied in Cubic Feet. Contact Master Meter for proper part number.</i>			
RATE OF FLOW REGISTERS			
6"	Rate of Flow Register	DC16-1HA-AAA-2	
RECLAIM REGISTERS			
6"	Reclaim Flat Glass USG Register w/Bronze Lid	DC16-1DA-AAA-2	
6"	Reclaim Flat Glass CF Register w/Bronze Lid	DC16-2DA-AAA-2	
6"	Reclaim DIALOG USG Register w/Bronze Lid	DC16-1RM-AAA-2	
6"	Reclaim DIALOG CF Register w/Bronze Lid	DC16-2RM-AAA-2	
6"	Reclaim DIALOG USG Register w/DIALOG Module w/ReadPad	DC16-1RU-AAA-2	
6"	Reclaim DIALOG CF Register w/DIALOG Module w/ReadPad	DC16-2RU-AAA-2	
METER FLANGES PER PAIR			
6"	Round Cast Iron Meter Flanges w/Gasket & Bolts (Price per pair)	FLG-6	
STRAINERS			
6"	Bronze Strainer When Purchased w/ Meter (8-15/16" length)	907 600 TSA	
6"	Bronze Strainer When Purchased Separate (8-15/16" length)	907 600 TSA	

Note: The US Gallon and Cubic Feet registers are identified above by the letters USG and CF.

Master Meter Product List
Effective July 1, 2004



FIRE SERVICE METERS

4" FIRE SERVICE COMPOUND METER

Size	Register	Part Number	
DIALOG REGISTERS AND ELECTRONICS			
4"	DIALOG USG Register w/Bronze Lid	FC15-1BM-AAA-2	
4"	DIALOG CF Register w/Bronze Lid	FC15-2BM-AAA-2	
4"	DIALOG USG Register w/DIALOG Module w/ReadPad	FC15-1BU-AAA-2	
4"	DIALOG CF Register w/DIALOG Module w/ReadPad	FC15-2BU-AAA-2	
4"	DIALOG USG Register w/Dual Switch Module	FC15-1BN-AAA-2	
4"	DIALOG CF Register w/Dual Switch Module	FC15-2BN-AAA-2	
METER FLANGES PER PAIR			
4"	Round Cast Iron Meter Flanges w/Gasket & Bolts (Price per pair)	FLG-4	

6" FIRE SERVICE COMPOUND METER

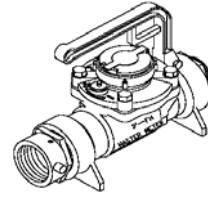
Size	Register	Part Number	
DIALOG REGISTERS AND ELECTRONICS			
6"	DIALOG USG Register w/Bronze Lid	FC16-1BM-AAA-2	
6"	DIALOG CF Register w/Bronze Lid	FC16-2BM-AAA-2	
6"	DIALOG USG Register w/DIALOG Module w/ReadPad	FC16-1BU-AAA-2	
6"	DIALOG CF Register w/DIALOG Module w/ReadPad	FC16-2BU-AAA-2	
6"	DIALOG USG Register w/Dual Switch Module	FC16-1BN-AAA-2	
6"	DIALOG CF Register w/Dual Switch Module	FC16-2BN-AAA-2	
METER FLANGES PER PAIR			
6"	Round Cast Iron Meter Flanges w/Gasket & Bolts (Price per pair)	FLG-6	

8" FIRE SERVICE COMPOUND METER

Size	Register	Part Number	
DIALOG REGISTERS AND ELECTRONICS			
8"	DIALOG USG Register w/Bronze Lid	FC17-1BM-AAA-2	
8"	DIALOG CF Register w/Bronze Lid	FC17-2BM-AAA-2	
8"	DIALOG USG Register w/DIALOG Module w/ReadPad	FC17-1BU-AAA-2	
8"	DIALOG CF Register w/DIALOG Module w/ReadPad	FC17-2BU-AAA-2	
8"	DIALOG USG Register w/Dual Switch Module	FC17-1BN-AAA-2	
8"	DIALOG CF Register w/Dual Switch Module	FC17-2BN-AAA-2	
METER FLANGES PER PAIR			
8"	Round Cast Iron Meter Flanges w/Gasket & Bolts (Price per pair)	FLG-8	

Note: The US Gallon and Cubic Feet registers are identified above by the letters USG and CF.

Master Meter Product List
Effective July 1, 2004



FIRE HYDRANT METER

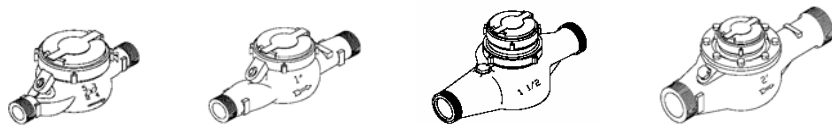
3" FIRE HYDRANT METER ALUMINUM BODY			
Size	Register	Part Number	
3"	Fire Hydrant Meter USG Register With Couplings	FH14-1AA-IAA-2	
3"	Fire Hydrant Meter CF Register With Couplings	FH14-2AA-IAA-2	
3"	Fire Hydrant Meter USG Register Less Couplings	FH14-1AA-IOA-2	
3"	Fire Hydrant Meter CF Register Less Couplings	FH14-2AA-IOA-2	
BRASS HYDRANT ADAPTER			
	2-1/2" Female NST x 2" Male NPT Brass Hydrant Adapter	905 2 ADPT	
	2" Brass Gate Valve	905 2 GV	



PORTABLE TEST METER

SMALL PORTABLE TEST METER (PTM)			
Size	Register	Part Number	
5/8" X 3/4"	Small Portable Test Meter USG	PT05-1HA-AAA-2	
5/8" X 3/4"	Small Portable Test Meter CF	PT05-2HA-AAA-3	

SPECIAL APPLICATION WATER METERS

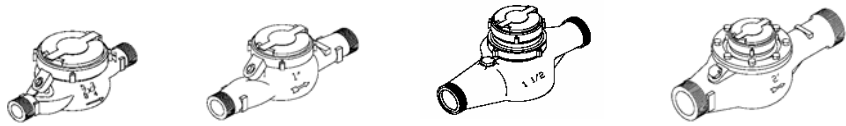


NICKEL PLATED HOSTILE SERVICE MULTI-JET METERS WITH PP Internals

Size	Register	Part Number	
5/8" X 1/2"	Nickel Plated Hostile Service Meter USG Register	MJ04-1AA-GAB-2	
5/8" X 3/4"	Nickel Plated Hostile Service Meter USG Register	MJ05-1AA-GAB-2	
3/4" (7-1/2")	Nickel Plated Hostile Service Meter USG Register	MJ06-1AA-GAB-2	
3/4" (9")	Nickel Plated Hostile Service Meter USG Register	MJ07-1AA-GAB-2	
1"	Nickel Plated Hostile Service Meter USG Register	MJ09-1AA-GAB-2	
1-1/2" Thd.	Nickel Plated Hostile Service Meter USG Register	MJ10-1AA-GAB-2	
2" Thd.	Nickel Plated Hostile Service Meter USG Register	MJ12-1AA-GAB-2	

NICKEL PLATED METER COUPLINGS			
Size	Register	Part Number	
5/8"	Nickel Plated Meter Couplings & Gaskets	901 1/2 EP	
3/4"	Nickel Plated Meter Couplings & Gaskets	902 3/4 EP	
1"	Nickel Plated Meter Couplings & Gaskets	903 1 EP	
1-1/2"	Nickel Plated Meter Couplings & Gaskets	904 1.5 EP	
2"	Nickel Plated Meter Couplings & Gaskets	905 2 EP	

SPECIAL APPLICATION WATER METERS



BRONZE BODY HOSTILE SERVICE MULTI-JET METERS -w/ PP Internals

Size	Register	Part Number
5/8" X 1/2"	Bronze Body Hostile Service Meter USG Register	MJ04-1AA-AAB-2
5/8" X 3/4"	Bronze Body Hostile Service Meter USG Register	MJ05-1AA-AAB-2
3/4" (7-1/2")	Bronze Body Hostile Service Meter USG Register	MJ06-1AA-AAB-2
3/4" (9")	Bronze Body Hostile Service Meter USG Register	MJ07-1AA-AAB-2
1"	Bronze Body Hostile Service Meter USG Register	MJ09-1AA-AAB-2
1-1/2" Thd.	Bronze Body Hostile Service Meter USG Register	MJ10-1AA-AAB-2
2" Thd.	Bronze Body Hostile Service Meter USG Register	MJ12-1AA-AAB-2

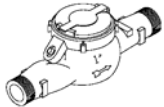
METER COUPLINGS

Size	Part Number
5/8" (Each)*	901 1/2 CPL
3/4" (Each)*	902 3/4 CPL
1" (Each)*	903 1 CPL
1-1/2" (Each)*	904 1.5 CPL
2" (Each)*	905 2 CPL

* PRICE INCLUDES METER GASKET OR GASKETS.

HOSTILE SERVICE POLYPROPYLENE MEASURING CHAMBER & REGISTER

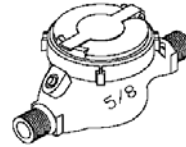
Size	Register	Part Number
5/8"	Polypropylene Insert w/ USG Register	544 173 09
3/4"	Polypropylene Insert w/ USG Register	544 573 09
1"	Polypropylene Insert w/ USG Register	544 773 09
1-1/2"	Polypropylene Insert w/ USG Register	544 816 09
2"	Polypropylene Insert w/ USG Register	544 973 09



HEAVY DUTY METER

Size	Register	Part Number
1"	Heavy Duty Meter w/ USG Contact Head Register 1 Gal. Pulse	MJ09-1CH-AAF-2

HOT WATER MULTI-JET METERS



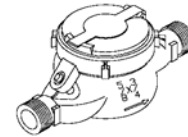
5/8" HOT WATER METER "BRONZE BODY"			
Size	Register	Part Number	
FLAT GLASS DIRECT READ			
5/8"	Flat Glass USG Register w/Bronze Lid	MJ04-1AA-AAD-2	
5/8"	Flat Glass CF Register w/Bronze Lid	MJ04-2AA-AAD-2	
DIALOG REGISTERS AND ELECTRONICS			
5/8"	DIALOG USG Register w/Plastic Lid	MJ04-1BD-AAD-2	
5/8"	DIALOG CF Register w/Plastic Lid	MJ04-2BD-AAD-2	
5/8"	DIALOG USG Register w/Bronze Lid	MJ04-1BM-AAD-2	
5/8"	DIALOG CF Register w/Bronze Lid	MJ04-2BM-AAD-2	
5/8"	DIALOG USG Register w/DIALOG Module w/ReadPad	MJ04-1BU-AAD-2	
5/8"	DIALOG CF Register w/DIALOG Module w/ReadPad	MJ04-2BU-AAD-2	
CONTACT HEAD REGISTERS			
5/8"	Contact Head USG Register & Reed Switch Assembly 1/10 Gal. Pulse	MJ04-1CG-AAD-2	
5/8"	Contact Head USG Register & Reed Switch Assembly 1 Gal. Pulse	MJ04-1CH-AAD-2	
5/8"	Contact Head USG Register & Reed Switch Assembly 10 Gal. Pulse	MJ04-1CI-AAD-2	
<i>Note: Contact head registers can be supplied in Cubic Feet. Contact Master Meter for proper part number.</i>			
METER COUPLINGS			
5/8"	1/2" Bronze Meter Coupling w/Gasket (Price per each coupling)	901 1/2 CPL	

5/8" HOT WATER METER "ENVIROBRASS BODY"			
Size	Register	Part Number	
FLAT GLASS DIRECT READ			
5/8"	Flat Glass USG Register w/Bronze Lid	MJ04-1AA-NAD-2	
5/8"	Flat Glass CF Register w/Bronze Lid	MJ04-2AA-NAD-2	
DIALOG REGISTERS AND ELECTRONICS			
5/8"	DIALOG USG Register w/Plastic Lid	MJ04-1BD-NAD-2	
5/8"	DIALOG CF Register w/Plastic Lid	MJ04-2BD-NAD-2	
5/8"	DIALOG USG Register w/Bronze Lid	MJ04-1BM-NAD-2	
5/8"	DIALOG CF Register w/Bronze Lid	MJ04-2BM-NAD-2	
5/8"	DIALOG USG Register w/DIALOG Module w/ReadPad	MJ04-1BU-NAD-2	
5/8"	DIALOG CF Register w/DIALOG Module w/ReadPad	MJ04-2BU-NAD-2	
CONTACT HEAD REGISTERS			
5/8"	Contact Head USG Register & Reed Switch Assembly 1/10 Gal. Pulse	MJ04-1CG-NAD-2	
5/8"	Contact Head USG Register & Reed Switch Assembly 1 Gal. Pulse	MJ04-1CH-NAD-2	
5/8"	Contact Head USG Register & Reed Switch Assembly 10 Gal. Pulse	MJ04-1CI-NAD-2	
<i>Note: Contact head registers can be supplied in Cubic Feet. Contact Master Meter for proper part number.</i>			
METER COUPLINGS			
5/8"	1/2" Bronze Meter Coupling w/Gasket (Price per each coupling)	901 1/2 CPL	

Note: The US Gallon and Cubic Feet registers are identified above by the letters USG and CF.

Master Meter Product List
Effective July 1, 2004

HOT WATER MULTI-JET METERS



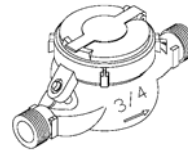
5/8" X 3/4" HOT WATER METER "BRONZE BODY"			
Size	Register	Part Number	
FLAT GLASS DIRECT READ			
5/8" X 3/4"	Flat Glass USG Register w/Bronze Lid	MJ05-1AA-AAD-2	
5/8" X 3/4"	Flat Glass CF Register w/Bronze Lid	MJ05-2AA-AAD-2	
DIALOG REGISTERS AND ELECTRONICS			
5/8" X 3/4"	DIALOG USG Register w/Plastic Lid	MJ05-1BD-AAD-2	
5/8" X 3/4"	DIALOG CF Register w/Plastic Lid	MJ05-2BD-AAD-2	
5/8" X 3/4"	DIALOG USG Register w/Bronze Lid	MJ05-1BM-AAD-2	
5/8" X 3/4"	DIALOG CF Register w/Bronze Lid	MJ05-2BM-AAD-2	
5/8" X 3/4"	DIALOG USG Register w/DIALOG Module w/ReadPad	MJ05-1BU-AAD-2	
5/8" X 3/4"	DIALOG CF Register w/DIALOG Module w/ReadPad	MJ05-2BU-AAD-2	
CONTACT HEAD REGISTERS			
5/8" X 3/4"	Contact Head USG Register & Reed Switch Assembly 1/10 Gal. Pulse	MJ05-1CG-AAD-2	
5/8" X 3/4"	Contact Head USG Register & Reed Switch Assembly 1 Gal. Pulse	MJ05-1CH-AAD-2	
5/8" X 3/4"	Contact Head USG Register & Reed Switch Assembly 10 Gal. Pulse	MJ05-1CI-AAD-2	
<i>Note: Contact head registers can be supplied in Cubic Feet. Contact Master Meter for proper part number.</i>			
METER COUPLINGS			
5/8" X 3/4"	3/4" Bronze Meter Coupling w/Gasket (Price per each coupling)	902 3/4 CPL	

5/8" X 3/4" HOT WATER METER "ENVIROBRASS BODY"			
Size	Register	Part Number	
FLAT GLASS DIRECT READ			
5/8" X 3/4"	Flat Glass USG Register w/Bronze Lid	MJ05-1AA-NAD-2	
5/8" X 3/4"	Flat Glass CF Register w/Bronze Lid	MJ05-2AA-NAD-2	
DIALOG REGISTERS AND ELECTRONICS			
5/8" X 3/4"	DIALOG USG Register w/Plastic Lid	MJ05-1BD-NAD-2	
5/8" X 3/4"	DIALOG CF Register w/Plastic Lid	MJ05-2BD-NAD-2	
5/8" X 3/4"	DIALOG USG Register w/Bronze Lid	MJ05-1BM-NAD-2	
5/8" X 3/4"	DIALOG CF Register w/Bronze Lid	MJ05-2BM-NAD-2	
5/8" X 3/4"	DIALOG USG Register w/DIALOG Module w/ReadPad	MJ05-1BU-NAD-2	
5/8" X 3/4"	DIALOG CF Register w/DIALOG Module w/ReadPad	MJ05-2BU-NAD-2	
CONTACT HEAD REGISTERS			
5/8" X 3/4"	Contact Head USG Register & Reed Switch Assembly 1/10 Gal. Pulse	MJ05-1CG-NAD-2	
5/8" X 3/4"	Contact Head USG Register & Reed Switch Assembly 1 Gal. Pulse	MJ05-1CH-NAD-2	
5/8" X 3/4"	Contact Head USG Register & Reed Switch Assembly 10 Gal. Pulse	MJ05-1CI-NAD-2	
<i>Note: Contact head registers can be supplied in Cubic Feet. Contact Master Meter for proper part number.</i>			
METER COUPLINGS			
5/8" X 3/4"	3/4" Bronze Meter Coupling w/Gasket (Price per each coupling)	902 3/4 CPL	

Note: The US Gallon and Cubic Feet registers are identified above by the letters USG and CF.

Master Meter Product List
Effective July 1, 2004

HOT WATER MULTI-JET METERS



3/4" X 7-1/2" HOT WATER METER "BRONZE BODY"

Size	Register	Part Number	
FLAT GLASS DIRECT READ			
3/4" (7-1/2")	Flat Glass USG Register w/Bronze Lid	MJ06-1AA-AAD-2	
3/4" (7-1/2")	Flat Glass CF Register w/Bronze Lid	MJ06-2AA-AAD-2	
DIALOG REGISTERS AND ELECTRONICS			
3/4" (7-1/2")	DIALOG USG Register w/Plastic Lid	MJ06-1BD-AAD-2	
3/4" (7-1/2")	DIALOG CF Register w/Plastic Lid	MJ06-2BD-AAD-2	
3/4" (7-1/2")	DIALOG USG Register w/Bronze Lid	MJ06-1BM-AAD-2	
3/4" (7-1/2")	DIALOG CF Register w/Bronze Lid	MJ06-2BM-AAD-2	
3/4" (7-1/2")	DIALOG USG Register w/DIALOG Module w/ReadPad	MJ06-1BU-AAD-2	
3/4" (7-1/2")	DIALOG CF Register w/DIALOG Module w/ReadPad	MJ06-2BU-AAD-2	
CONTACT HEAD REGISTERS			
3/4" (7-1/2")	Contact Head USG Register & Reed Switch Assembly 1 Gal. Pulse	MJ06-1CH-AAD-2	
3/4" (7-1/2")	Contact Head USG Register & Reed Switch Assembly 10 Gal. Pulse	MJ06-1CI-AAD-2	
3/4" (7-1/2")	Contact Head USG Register & Reed Switch Assembly 100 Gal. Pulse	MJ06-1CJ-AAD-2	
<i>Note: Contact head registers can be supplied in Cubic Feet. Contact Master Meter for proper part number.</i>			
METER COUPLINGS			
3/4" (7-1/2")	3/4" Bronze Meter Coupling w/Gasket (Price per each coupling)	902 3/4 CPL	

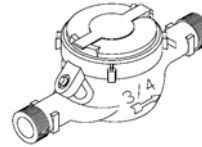
3/4" X 7-1/2" HOT WATER METER "ENVIROBRASS BODY"

Size	Register	Part Number	
FLAT GLASS DIRECT READ			
3/4" (7-1/2")	Flat Glass USG Register w/Bronze Lid	MJ06-1AA-NAD-2	
3/4" (7-1/2")	Flat Glass CF Register w/Bronze Lid	MJ06-2AA-NAD-2	
DIALOG REGISTERS AND ELECTRONICS			
3/4" (7-1/2")	DIALOG USG Register w/Plastic Lid	MJ06-1BD-NAD-2	
3/4" (7-1/2")	DIALOG CF Register w/Plastic Lid	MJ06-2BD-NAD-2	
3/4" (7-1/2")	DIALOG USG Register w/Bronze Lid	MJ06-1BM-NAD-2	
3/4" (7-1/2")	DIALOG CF Register w/Bronze Lid	MJ06-2BM-NAD-2	
3/4" (7-1/2")	DIALOG USG Register w/DIALOG Module w/ReadPad	MJ06-1BU-NAD-2	
3/4" (7-1/2")	DIALOG CF Register w/DIALOG Module w/ReadPad	MJ06-2BU-NAD-2	
CONTACT HEAD REGISTERS			
3/4" (7-1/2")	Contact Head USG Register & Reed Switch Assembly 1 Gal. Pulse	MJ06-1CH-NAD-2	
3/4" (7-1/2")	Contact Head USG Register & Reed Switch Assembly 10 Gal. Pulse	MJ06-1CI-NAD-2	
3/4" (7-1/2")	Contact Head USG Register & Reed Switch Assembly 100 Gal. Pulse	MJ06-1CJ-NAD-2	
<i>Note: Contact head registers can be supplied in Cubic Feet. Contact Master Meter for proper part number.</i>			
METER COUPLINGS			
3/4" (7-1/2")	3/4" Bronze Meter Coupling w/Gasket (Price per each coupling)	902 3/4 CPL	

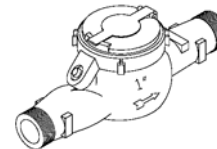
Note: The US Gallon and Cubic Feet registers are identified above by the letters USG and CF.

Master Meter Product List
Effective July 1, 2004

HOT WATER MULTI-JET METERS

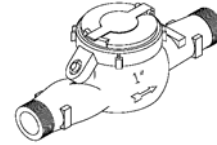


3/4" X 9" HOT WATER " ENVIROBRASS BODY"			
Size	Register	Part Number	
FLAT GLASS DIRECT READ			
3/4" (9")	Flat Glass USG Register w/Bronze Lid	MJ07-1AA-NAD-2	
3/4" (9")	Flat Glass CF Register w/Bronze Lid	MJ07-2AA-NAD-2	
DIALOG REGISTERS AND ELECTRONICS			
3/4" (9")	DIALOG USG Register w/Plastic Lid	MJ07-1BD-NAD-2	
3/4" (9")	DIALOG CF Register w/Plastic Lid	MJ07-2BD-NAD-2	
3/4" (9")	DIALOG USG Register w/Bronze Lid	MJ07-1BM-NAD-2	
3/4" (9")	DIALOG CF Register w/Bronze Lid	MJ07-2BM-NAD-2	
3/4" (9")	DIALOG USG Register w/DIALOG Module w/ReadPad	MJ07-1BU-NAD-2	
3/4" (9")	DIALOG CF Register w/DIALOG Module w/ReadPad	MJ07-2BU-NAD-2	
CONTACT HEAD REGISTERS			
3/4" (9")	Contact Head USG Register & Reed Switch Assembly 1 Gal. Pulse	MJ07-1CH-NAD-2	
3/4" (9")	Contact Head USG Register & Reed Switch Assembly 10 Gal. Pulse	MJ07-1CI-NAD-2	
3/4" (9")	Contact Head USG Register & Reed Switch Assembly 100 Gal. Pulse	MJ07-1CJ-NAD-2	
<i>Note: Contact head registers can be supplied in Cubic Feet. Contact Master Meter for proper part number.</i>			
METER COUPLINGS			
3/4" (9")	3/4" Bronze Meter Coupling w/Gasket (Price per each coupling)	902 3/4 CPL	

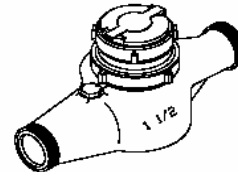


1" HOT WATER METER "BRONZE BODY"			
Size	Register	Part Number	
FLAT GLASS DIRECT READ			
1"	Flat Glass USG Register w/Bronze Lid	MJ09-1AA-AAD-2	
1"	Flat Glass CF Register w/Bronze Lid	MJ09-2AA-AAD-2	
DIALOG REGISTERS AND ELECTRONICS			
1"	DIALOG USG Register w/Plastic Lid	MJ09-1BD-AAD-2	
1"	DIALOG CF Register w/Plastic Lid	MJ09-2BD-AAD-2	
1"	DIALOG USG Register w/Bronze Lid	MJ09-1BM-AAD-2	
1"	DIALOG CF Register w/Bronze Lid	MJ09-2BM-AAD-2	
1"	DIALOG USG Register w/DIALOG Module w/ReadPad	MJ09-1BU-AAD-2	
1"	DIALOG CF Register w/DIALOG Module w/ReadPad	MJ09-2BU-AAD-2	
CONTACT HEAD REGISTERS			
1"	Contact Head USG Register & Reed Switch Assembly 1 Gal. Pulse	MJ09-1CH-AAD-2	
1"	Contact Head USG Register & Reed Switch Assembly 10 Gal. Pulse	MJ09-1CI-AAD-2	
1"	Contact Head USG Register & Reed Switch Assembly 100 Gal. Pulse	MJ09-1CJ-AAD-2	
<i>Note: Contact head registers can be supplied in Cubic Feet. Contact Master Meter for proper part number.</i>			
METER COUPLINGS			
1"	1" Bronze Meter Coupling w/Gasket (Price per each coupling)	903 1 CPL	

HOT WATER MULTI-JET METERS



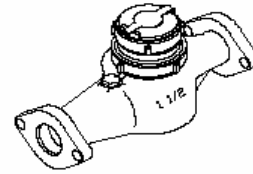
1" HOT WATER METER "ENVIROBRASS BODY"			
Size	Register	Part Number	
FLAT GLASS DIRECT READ			
1"	Flat Glass USG Register w/Bronze Lid	MJ09-1AA-NAD-2	
1"	Flat Glass CF Register w/Bronze Lid	MJ09-2AA-NAD-2	
DIALOG REGISTERS AND ELECTRONICS			
1"	DIALOG USG Register w/Plastic Lid	MJ09-1BD-NAD-2	
1"	DIALOG CF Register w/Plastic Lid	MJ09-2BD-NAD-2	
1"	DIALOG USG Register w/Bronze Lid	MJ09-1BM-NAD-2	
1"	DIALOG CF Register w/Bronze Lid	MJ09-2BM-NAD-2	
1"	DIALOG USG Register w/DIALOG Module w/ReadPad	MJ09-1BU-NAD-2	
1"	DIALOG CF Register w/DIALOG Module w/ReadPad	MJ09-2BU-NAD-2	
CONTACT HEAD REGISTERS			
1"	Contact Head USG Register & Reed Switch Assembly 1 Gal. Pulse	MJ09-1CH-NAD-2	
1"	Contact Head USG Register & Reed Switch Assembly 10 Gal. Pulse	MJ09-1CI-NAD-2	
1"	Contact Head USG Register & Reed Switch Assembly 100 Gal. Pulse	MJ09-1CJ-NAD-2	
<i>Note: Contact head registers can be supplied in Cubic Feet. Contact Master Meter for proper part number.</i>			
METER COUPLINGS			
1"	1" Bronze Meter Coupling w/Gasket (Price per each coupling)	903 1 CPL	



1-1/2" THREADED HOT WATER METER "BRONZE BODY"			
Size	Register	Part Number	
FLAT GLASS DIRECT READ			
1-1/2" Thd.	Flat Glass USG Register w/Bronze Lid	MJ10-1AA-AAD-2	
1-1/2" Thd.	Flat Glass CF Register w/Bronze Lid	MJ10-2AA-AAD-2	
DIALOG REGISTERS AND ELECTRONICS			
1-1/2" Thd.	DIALOG USG Register w/Plastic Lid	MJ10-1BD-AAD-2	
1-1/2" Thd.	DIALOG CF Register w/Plastic Lid	MJ10-2BD-AAD-2	
1-1/2" Thd.	DIALOG USG Register w/Bronze Lid	MJ10-1BM-AAD-2	
1-1/2" Thd.	DIALOG CF Register w/Bronze Lid	MJ10-2BM-AAD-2	
1-1/2" Thd.	DIALOG USG Register w/DIALOG Module w/ReadPad	MJ10-1BU-AAD-2	
1-1/2" Thd.	DIALOG CF Register w/DIALOG Module w/ReadPad	MJ10-2BU-AAD-2	
CONTACT HEAD REGISTERS			
1-1/2" Thd.	Contact Head USG Register & Reed Switch Assembly 1 Gal. Pulse	MJ10-1CH-AAD-2	
1-1/2" Thd.	Contact Head USG Register & Reed Switch Assembly 10 Gal. Pulse	MJ10-1CI-AAD-2	
1-1/2" Thd.	Contact Head USG Register & Reed Switch Assembly 100 Gal. Pulse	MJ10-1CJ-AAD-2	
<i>Note: Contact head registers can be supplied in Cubic Feet. Contact Master Meter for proper part number.</i>			
METER COUPLINGS			
1-1/2"	1-1/2" Bronze Meter Coupling w/Gasket (Price per each)	904 1.5 CPL	

Master Meter Product List
Effective July 1, 2004

HOT WATER MULTI-JET METERS

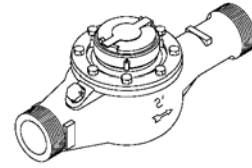


1-1/2" FLANGED HOT WATER METER "BRONZE BODY"		Part Number	
Size	Register		
FLAT GLASS DIRECT READ			
1-1/2" Flg.	Flat Glass USG Register w/Bronze Lid	MJ11-1AA-AAD-2	
1-1/2" Flg.	Flat Glass CF Register w/Bronze Lid	MJ11-2AA-AAD-2	
DIALOG REGISTERS AND ELECTRONICS			
1-1/2" Flg.	DIALOG USG Register w/Plastic Lid	MJ11-1BD-AAD-2	
1-1/2" Flg.	DIALOG CF Register w/Plastic Lid	MJ11-2BD-AAD-2	
1-1/2" Flg.	DIALOG USG Register w/Bronze Lid	MJ11-1BM-AAD-2	
1-1/2" Flg.	DIALOG CF Register w/Bronze Lid	MJ11-2BM-AAD-2	
1-1/2" Flg.	DIALOG USG Register w/DIALOG Module w/ReadPad	MJ11-1BU-AAD-2	
1-1/2" Flg.	DIALOG CF Register w/DIALOG Module w/ReadPad	MJ11-2BU-AAD-2	
CONTACT HEAD REGISTERS			
1-1/2" Flg.	Contact Head USG Register & Reed Switch Assembly 1 Gal. Pulse	MJ11-1CH-AAD-2	
1-1/2" Flg.	Contact Head USG Register & Reed Switch Assembly 10 Gal. Pulse	MJ11-1CI-AAD-2	
1-1/2" Flg.	Contact Head USG Register & Reed Switch Assembly 100 Gal. Pulse	MJ11-1CJ-AAD-2	
<i>Note: Contact head registers can be supplied in Cubic Feet. Contact Master Meter for proper part number.</i>			
OVAL METER FLANGES PER PAIR			
1-1/2"	Oval Bronze Meter Flanges w/Gasket & Bolts (Price per pair)	FLG-1.5 OBR	
1-1/2"	Oval Cast Iron Meter Flanges w/Gasket & Bolts (Price per pair)	FLG-1.5 OCI	

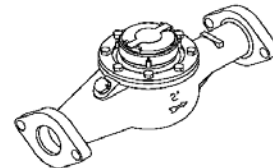
1-1/2" FLANGED HOT WATER METER "ENVIROBRASS BODY"		Part Number	
Size	Register		
FLAT GLASS DIRECT READ			
1-1/2" Flg.	Flat Glass USG Register w/Bronze Lid	MJ11-1AA-NAD-2	
1-1/2" Flg.	Flat Glass CF Register w/Bronze Lid	MJ11-2AA-NAD-2	
DIALOG REGISTERS AND ELECTRONICS			
1-1/2" Flg.	DIALOG USG Register w/Plastic Lid	MJ11-1BD-NAD-2	
1-1/2" Flg.	DIALOG CF Register w/Plastic Lid	MJ11-2BD-NAD-2	
1-1/2" Flg.	DIALOG USG Register w/Bronze Lid	MJ11-1BM-NAD-2	
1-1/2" Flg.	DIALOG CF Register w/Bronze Lid	MJ11-2BM-NAD-2	
1-1/2" Flg.	DIALOG USG Register w/DIALOG Module w/ReadPad	MJ11-1BU-NAD-2	
1-1/2" Flg.	DIALOG CF Register w/DIALOG Module w/ReadPad	MJ11-2BU-NAD-2	
CONTACT HEAD REGISTERS			
1-1/2" Flg.	Contact Head USG Register & Reed Switch Assembly 1 Gal. Pulse	MJ11-1CH-NAD-2	
1-1/2" Flg.	Contact Head USG Register & Reed Switch Assembly 10 Gal. Pulse	MJ11-1CI-NAD-2	
1-1/2" Flg.	Contact Head USG Register & Reed Switch Assembly 100 Gal. Pulse	MJ11-1CJ-NAD-2	
<i>Note: Contact head registers can be supplied in Cubic Feet. Contact Master Meter for proper part number.</i>			
OVAL METER FLANGES PER PAIR			
1-1/2"	Oval Bronze Meter Flanges w/Gasket & Bolts (Price per pair)	FLG-1.5 OBR	
1-1/2"	Oval Cast Iron Meter Flanges w/Gasket & Bolts (Price per pair)	FLG-1.5 OCI	

Note: The US Gallon and Cubic Feet registers are identified above by the letters USG and CF.

HOT WATER MULTI-JET METERS



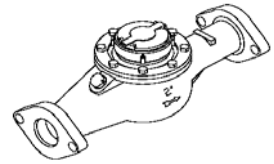
2" THREADED HOT WATER METER		"BRONZE BODY"	
Size	Register	Part Number	
FLAT GLASS DIRECT READ			
2" Thd.	Flat Glass USG Register w/Bronze Lid	MJ12-1AA-AAD-2	
2" Thd.	Flat Glass CF Register w/Bronze Lid	MJ12-2AA-AAD-2	
DIALOG REGISTERS AND ELECTRONICS			
2" Thd.	DIALOG USG Register w/Plastic Lid	MJ12-1BD-AAD-2	
2" Thd.	DIALOG CF Register w/Plastic Lid	MJ12-2BD-AAD-2	
2" Thd.	DIALOG USG Register w/Bronze Lid	MJ12-1BM-AAD-2	
2" Thd.	DIALOG CF Register w/Bronze Lid	MJ12-2BM-AAD-2	
2" Thd.	DIALOG USG Register w/DIALOG Module w/ReadPad	MJ12-1BU-AAD-2	
2" Thd.	DIALOG CF Register w/DIALOG Module w/ReadPad	MJ12-2BU-AAD-2	
CONTACT HEAD REGISTERS			
2" Thd.	Contact Head USG Register & Reed Switch Assembly 1 Gal. Pulse	MJ12-1CH-AAD-2	
2" Thd.	Contact Head USG Register & Reed Switch Assembly 10 Gal. Pulse	MJ12-1CI-AAD-2	
2" Thd.	Contact Head USG Register & Reed Switch Assembly 100 Gal. Pulse	MJ12-1CJ-AAD-2	
<i>Note: Contact head registers can be supplied in Cubic Feet. Contact Master Meter for proper part number.</i>			
METER COUPLINGS			
2"	Bronze Meter Coupling w/Gasket (Price per each)	905 2 CPL	



2" FLANGED HOT WATER METER		"BRONZE BODY"	
Size	Register	Part Number	
FLAT GLASS DIRECT READ			
2" Flg.	Flat Glass USG Register w/Bronze Lid	MJ13-1AA-AAD-2	
2" Flg.	Flat Glass CF Register w/Bronze Lid	MJ13-2AA-AAD-2	
DIALOG REGISTERS AND ELECTRONICS			
2" Flg.	DIALOG USG Register w/Plastic Lid	MJ13-1BD-AAD-2	
2" Flg.	DIALOG CF Register w/Plastic Lid	MJ13-2BD-AAD-2	
2" Flg.	DIALOG USG Register w/Bronze Lid	MJ13-1BM-AAD-2	
2" Flg.	DIALOG CF Register w/Bronze Lid	MJ13-2BM-AAD-2	
2" Flg.	DIALOG USG Register w/DIALOG Module w/ReadPad	MJ13-1BU-AAD-2	
2" Flg.	DIALOG CF Register w/DIALOG Module w/ReadPad	MJ13-2BU-AAD-2	
CONTACT HEAD REGISTERS			
2" Flg.	Contact Head USG Register & Reed Switch Assembly 1 Gal. Pulse	MJ13-1CH-AAD-2	
2" Flg.	Contact Head USG Register & Reed Switch Assembly 10 Gal. Pulse	MJ13-1CI-AAD-2	
2" Flg.	Contact Head USG Register & Reed Switch Assembly 100 Gal. Pulse	MJ13-1CJ-AAD-2	
<i>Note: Contact head registers can be supplied in Cubic Feet. Contact Master Meter for proper part number.</i>			
OVAL METER FLANGES PER PAIR			
2"	Oval Bronze Meter Flanges w/Gasket & Bolts (Price per pair)	FLG-2 OBR	
2"	Oval Cast Iron Meter Flanges w/Gasket & Bolts (Price per pair)	FLG-2 OCI	

Note: The US Gallon and Cubic Feet registers are identified above by the letters USG and CF.

HOT WATER MULTI-JET METERS

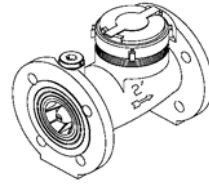


2" FLANGED HOT WATER METER "ENVIROBRASS BODY"

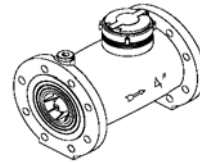
Size	Register	Part Number	
FLAT GLASS DIRECT READ			
2" Flg.	Flat Glass USG Register w/Bronze Lid	MJ13-1AA-NAD-2	
2" Flg.	Flat Glass CF Register w/Bronze Lid	MJ13-2AA-NAD-2	
DIALOG REGISTERS AND ELECTRONICS			
2" Flg.	DIALOG USG Register w/Plastic Lid	MJ13-1BD-NAD-2	
2" Flg.	DIALOG CF Register w/Plastic Lid	MJ13-2BD-NAD-2	
2" Flg.	DIALOG USG Register w/Bronze Lid	MJ13-1BM-NAD-2	
2" Flg.	DIALOG CF Register w/Bronze Lid	MJ13-2BM-NAD-2	
2" Flg.	DIALOG USG Register w/DIALOG Module w/ReadPad	MJ13-1BU-NAD-2	
2" Flg.	DIALOG CF Register w/DIALOG Module w/ReadPad	MJ13-2BU-NAD-2	
CONTACT HEAD REGISTERS			
2" Flg.	Contact Head USG Register & Reed Switch Assembly 1 Gal. Pulse	MJ13-1CH-NAD-2	
2" Flg.	Contact Head USG Register & Reed Switch Assembly 10 Gal. Pulse	MJ13-1CI-NAD-2	
2" Flg.	Contact Head USG Register & Reed Switch Assembly 100 Gal. Pulse	MJ13-1CJ-NAD-2	
<i>Note: Contact head registers can be supplied in Cubic Feet. Contact Master Meter for proper part number.</i>			
OVAL METER FLANGES PER PAIR			
2"	Oval Bronze Meter Flanges w/Gasket & Bolts (Price per pair)	FLG-2 OBR	
2"	Oval Cast Iron Meter Flanges w/Gasket & Bolts (Price per pair)	FLG-2 OCI	

Note: The US Gallon and Cubic Feet registers are identified above by the letters USG and CF.

HOT WATER TURBINE METERS



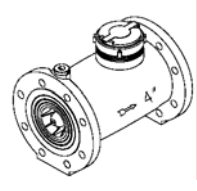
2" CAST IRON BODY HOT WATER TURBINE METER			
Size	Register	Part Number	
FLAT GLASS DIRECT READ			
2"	Flat Glass USG Register w/Bronze Lid	WH13-1AA-MAD-0	
2"	Flat Glass CF Register w/Bronze Lid	WH13-2AA-MAD-0	
DIALOG REGISTERS AND ELECTRONICS			
<i>CONTACT MASTER METER FOR AVAILABILITY AND PART NUMBER</i>			
CONTACT HEAD REGISTERS			
2"	Contact Head USG Register & Reed Switch Assembly 10 Gal. Pulse	WH13-1CI-MAD-0	
2"	Contact Head USG Register & Reed Switch Assembly 100 Gal. Pulse	WH13-1CJ-MAD-0	
2"	Contact Head USG Register & Reed Switch Assembly 1000 Gal. Pulse	WH13-1CK-MAD-0	
<i>Note: Contact head registers can be supplied in Cubic Feet. Contact Master Meter for proper part number.</i>			
RATE OF FLOW REGISTERS			
2"	Rate of Flow Register	WH13-1HA-MAD-0	
METER FLANGES PER PAIR			
2"	Round Cast Iron Meter Flanges w/Gasket & Bolts (Price per pair)	FLG-2 RCI	



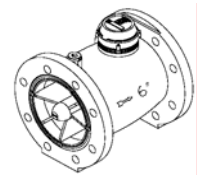
3" CAST IRON BODY HOT WATER TURBINE METER			
Size	Register	Part Number	
FLAT GLASS DIRECT READ			
3"	Flat Glass USG Register w/Bronze Lid	WH14-1AA-MAD-0	
3"	Flat Glass CF Register w/Bronze Lid	WH14-2AA-MAD-0	
DIALOG REGISTERS AND ELECTRONICS			
<i>CONTACT MASTER METER FOR AVAILABILITY AND PART NUMBER</i>			
CONTACT HEAD REGISTERS			
3"	Contact Head USG Register & Reed Switch Assembly 10 Gal. Pulse	WH14-1CI-MAD-0	
3"	Contact Head USG Register & Reed Switch Assembly 100 Gal. Pulse	WH14-1CJ-MAD-0	
3"	Contact Head USG Register & Reed Switch Assembly 1000 Gal. Pulse	WH14-1CK-MAD-0	
<i>Note: Contact head registers can be supplied in Cubic Feet. Contact Master Meter for proper part number.</i>			
RATE OF FLOW REGISTERS			
3"	Rate of Flow Register	WH14-1HA-MAD-0	
METER FLANGES PER PAIR			
3"	Round Cast Iron Meter Flanges w/Gasket & Bolts (Price per pair)	FLG-3	

Note: The US Gallon and Cubic Feet registers are identified above by the letters USG and CF.

HOT WATER TURBINE METERS



4" CAST IRON BODY HOT WATER TURBINE METER			
Size	Register	Part Number	
FLAT GLASS DIRECT READ			
4"	Flat Glass USG Register w/Bronze Lid	WH15-1AA-MAD-0	
4"	Flat Glass CF Register w/Bronze Lid	WH15-2AA-MAD-0	
DIALOG REGISTERS AND ELECTRONICS			
<i>CONTACT MASTER METER FOR AVAILABILITY AND PART NUMBER</i>			
CONTACT HEAD REGISTERS			
4"	Contact Head USG Register & Reed Switch Assembly 10 Gal. Pulse	WH15-1CI-MAD-0	
4"	Contact Head USG Register & Reed Switch Assembly 100 Gal. Pulse	WH15-1CJ-MAD-0	
4"	Contact Head USG Register & Reed Switch Assembly 1000 Gal. Pulse	WH15-1CK-MAD-0	
<i>Note: Contact head registers can be supplied in Cubic Feet. Contact Master Meter for proper part number.</i>			
RATE OF FLOW REGISTERS			
4"	Rate of Flow Register	WH15-1HA-MAD-0	
METER FLANGES PER PAIR			
4"	Round Cast Iron Meter Flanges w/Gasket & Bolts (Price per pair)	FLG-4	



6" CAST IRON BODY HOT WATER TURBINE METER			
Size	Register	Part Number	
FLAT GLASS DIRECT READ			
6"	Flat Glass USG Register w/Bronze Lid	WH16-1AA-MAD-0	
6"	Flat Glass CF Register w/Bronze Lid	WH16-2AA-MAD-0	
DIALOG REGISTERS AND ELECTRONICS			
<i>CONTACT MASTER METER FOR AVAILABILITY AND PART NUMBER</i>			
CONTACT HEAD REGISTERS			
6"	Contact Head USG Register & Reed Switch Assembly 100 Gal. Pulse	WH16-1CJ-MAD-0	
6"	Contact Head USG Register & Reed Switch Assembly 1000 Gal. Pulse	WH16-1CK-MAD-0	
6"	Contact Head USG Register & Reed Switch Assembly 10000 Gal. Pulse	WH16-1CL-MAD-0	
<i>Note: Contact head registers can be supplied in Cubic Feet. Contact Master Meter for proper part number.</i>			
RATE OF FLOW REGISTERS			
6"	Rate of Flow Register	WH16-1HA-MAD-0	
METER FLANGES PER PAIR			
6"	Round Cast Iron Meter Flanges w/Gasket & Bolts (Price per pair)	FLG-6	

Note: The US Gallon and Cubic Feet registers are identified above by the letters USG and CF.

METER ACCESSORIES



METER COUPLINGS		
Size	Part Number	
5/8" (EACH)*	901 1/2 CPL	
3/4" (EACH)*	902 3/4 CPL	
1" (EACH)*	903 1 CPL	
1-1/2" (EACH)*	904 1.5 CPL	
2" (EACH)*	905 2 CPL	

* PRICE INCLUDES METER GASKET OR GASKETS.

METER COMPANION FLANGES (Priced Per Pair)		
Size	Part Number	
1-1/2" Bronze, Oval*	FLG-1.5 OBR	
1-1/2" Cast Iron, Oval*	FLG-1.5 OCI	
2" Bronze, Oval*	FLG-2 OBR	
2" Cast Iron, Oval*	FLG-2 OCI	
2" Cast Iron, Round*	FLG-2 RCI	
3" Cast Iron, Round*	FLG-3	
4" Cast Iron, Round*	FLG-4	
6" Cast Iron, Round*	FLG-6	
8" Cast Iron, Round*	FLG-8	
10" Cast Iron, Round*	<i>Contact Master Meter</i>	
12" Cast Iron, Round*	<i>Contact Master Meter</i>	

* PRICE INCLUDES BOLTS, NUTS AND GASKETS.

STRAINERS WHEN PURCHASED WITH METER		
Size	Part Number	
1-1/2" Bronze	907 150 TSA	
2" Bronze	907 200 TSA	
3" Bronze	907 300 TSA	
4" Bronze	907 400 TSA	
6" Bronze	907 600 TSA	
8" Cast Iron	907 800 TS	
10" Cast Iron	907 900 TS	
12" Cast Iron	907 910 TS	

STRAINERS WHEN PURCHASED SEPARATE		
Size	Part Number	
1-1/2" Bronze	907 150 TSA	
2" Bronze	907 200 TSA	
3" Bronze	907 300 TSA	
4" Bronze	907 400 TSA	
6" Bronze	907 600 TSA	
8" Cast Iron	907 800 TS	
10" Cast Iron	907 900 TS	
12" Cast Iron	907 910 TS	

METER ACCESSORIES

NON-RETURN VALVE (INSTALLED IN METER)		
Size	Part Number	
5/8X3/4" & 3/4"SL	CONTACT MM	
1"	CONTACT MM	

METER TOOLS		
Type	Part Number	
Tee-handle meter wrench for meters w/ bronze register ring	912 001 TW	
Plastic frost plug wrench	912 002 FPW	
FAM wrench	246 187 09	

MISCELLANEOUS INSTRUMENTS AND COUNTERS		
Type	Part Number	
4-20 Ma Converter (Transducer)*	912 008 CON	
Panel LCD Counter w/ or w/o reset*	912 100 KAL	
Cub 5 Rate of Flow Display and Counter*	912 100 RC	

*Accompanying water meter must be equipped w/ the appropriate registers to provide proper output to the items listed above.

MISCELLANEOUS REGISTERS WHEN PURCHASED SEPARATE

CONTACT-HEAD REGISTER W/ REED SWITCH ASSEMBLY WHEN PURCHASED SEPARATE		
Size	Part Number	
5/8" Thru 1"	CONTACT MM	
1-1/2" Thru 12"	CONTACT MM	
Dual Switch Contact-head	CONTACT MM	

Please note that the contact head registers can be supplied in Cubic Feet. Please contact Master Meter for the proper part number and price.

RATE OF FLOW REGISTER WHEN PURCHASED SEPARATE		
Size	Part Number	
5/8" Thru 1" Meters	CONTACT MM	
1-1/2" Thru 12" Meters	CONTACT MM	

RECLAIMED WATER REGISTERS (NON-POTABLE) WHEN PURCHASED SEPARATE		
Size	Part Number	
5/8" Thru 1" Meters	CONTACT MM	
1-1/2" Thru 12" Meters	CONTACT MM	

Master Meter Product List
Effective July 1, 2004

DIALOG & DIALOG 2G REGISTERS WHEN PURCHASED SEPARATE

DIALOG REGISTER WHEN PURCHASED SEPARATE
(Registers listed below are for use w/ DIALOG Modules & Dual Switch Modules)

SIZE	Part Number	
5/8", 5/8" X 3/4" Top Load Multi-jets	CONTACT MM	
3/4" Top Load Multi-Jet	CONTACT MM	
1" Top Load Multi-Jet	CONTACT MM	
1-1/2", 2" Multi-jets	CONTACT MM	
1-1/2" thru 12" Turbines & Fire Service Turbines	CONTACT MM	
2" - 3" Compound	CONTACT MM	
4" Compound & 4" Fire Service Compound	CONTACT MM	
6" Compound, 6" - 8" Fire Service Compound	CONTACT MM	

DIALOG 2G REGISTER WITH READPAD WHEN PURCHASED SEPARATE

SIZE	Part Number	
5/8", 5/8" X 3/4" Multi-jets	CONTACT MM	
3/4" Multi-Jet	CONTACT MM	
1" Multi-Jet	CONTACT MM	
1-1/2", 2" Multi-jets	CONTACT MM	

DIALOG 2G ACCESSORIES FOR ON-SITE READING

DIALOG ELECTRONIC MODULES FOR STANDARD DIALOG REGISTERS

Type	Part Number	
DIALOG Module w/ReadPad	00 1682	

DIALOG ON-SITE READING ACCESSORIES

Type	Part Number	
ReadMaster Read Only Units	00 3180	
Programmer / Reader (Mint)	199 612 16	
Programmer / Reader Micronet 887	00 3192	
Pit Programming Wand Complete (18" overall length) <i>Standard Length</i>	Use Handle & Ext. #	
Pit Programming Wand Complete (24" overall length)	Use Handle & Ext. #	
Wand Handle Only	00 3205	
12" Wand Extension	D975 250 35	
18" Wand Extension	D975 252 19	
Pit Lid Module → <i>Top</i>	D974 260 09	
Pit Lid Module → <i>Bottom</i>	D975 208 09	
Wall Mounting Bracket for ReadPad	D992 105 09	
ReadPad w/ Cable	00 1695	
External ReadPad for DIALOG 2G in the Glass Register	D975 009 20	

DUAL & SINGLE SWITCH MODULES FOR STANDARD DIALOG REGISTERS

Type	Part Number	
Dual Switch Module	CONTACT MM	
Single Switch Module for Wet Pit	CONTACT MM	