

INSTALLATION INSTRUCTIONS



FIELD PROGRAMMABLE PARAMETERS		FACTORY DEFAULT PARAMETERS	
ID	12 DIGITS SUPPORTS NUMERIC	ID	012345678912
READ	6 DIGITS	READ	000006
FACTOR	100, 200, 50, 40, 20, 10, 2,1	FACTOR	1
METER TYPE	WATER	METER TYPE	WATER
NETWORK	N/A	NETWORK	N/A

FCC ID	MXND 125
--------	----------

The DIALOG 2G comes standard with 5 1/2 inch cable length with read pad as a whole unit. The user and the installer should be aware that changes and modifications to the equipment not expressly approved by Master Meter could void warranty and the user's authority to operate the equipment. Professionally trained personnel should install the equipment.

Note: DIALOG 2G Modules is designed only for Master Meter meters with DIALOG register.

Step 1

Identify the dialog register: the dialog register will have a marking DIALOG on the face plate of the register and the register should have a raised lens.



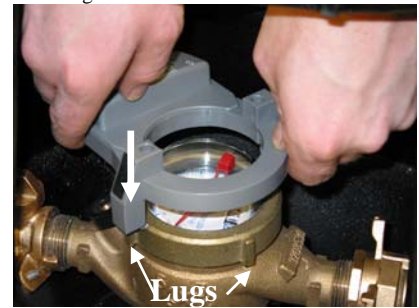
Step 2

Clean cover ring surface and register lens of any dirt or debris in order to install the DIALOG 2G flush on the surface.



Step 3

Position the DIALOG 2G over the meter where the screw ports line up with the lugs on the cover ring



Step 4

Make sure the DIALOG 2G sits flush on the cover ring and that the hooks on the 2G are under the lugs on the cover ring.



Step 5

Finally, while tightening the screws, guide the hooks so they grab hold of the lugs from underneath for a secure installation. Do not over tighten.



Step 6

Insert tamper caps into screw ports and push down on top of cap to secure it in place.



Correct Installation



Try to position meter upright before installing DIALOG 2G.



Try to position meter upright before installing DIALOG 2G.



INSTALLATION INSTRUCTIONS

Installing read pad on pit lid module

Note: Pit lid modules may vary in style



Step 1

Insert read pad through locking nut.



Step 2

Insert read pad through the hole on the pit lid



Step 3

Insert read pad into pit lid module.



Step 4

Insert pit lid module back through pit lid.



Step 5

Tighten plastic nut to secure the pit lid module on to pit lid.



Step 6

Tighten plastic nut to secure the pit lid module on to pit lid. Do not over tighten

