



INSTALLATION

Product: New Register Shroud

Category: Registers/Endpoints

Type: AccuLinx™, Dialog® 3G, other



Removal of Old Register:

Step 1:

Old version of register & housing



Step 2:

Remove tamper seals with screwdriver or punch.



Step 3:

Unscrew Mounting Screws



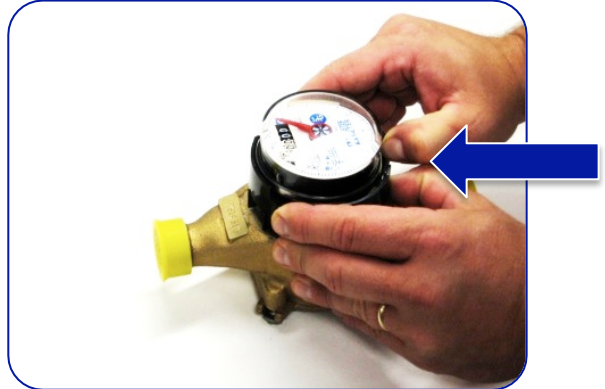
Step 4:

Pull Cover Assembly Straight Up



Step 5:

Remove register shroud by opening gap and pulling off of body.



Step 6:

Meter with register and housing removed





Installing New Shroud and Register:

Step 1:

Starting position of twist on register shroud



Step 2:

*Twist clockwise until mechanical stop.
* Final position shown.*



Step 3:

Note locating indentations on register base each 90 degrees.



Step 4:

*Place register in shroud in preferred orientation.
Ensure indentation on register engage with tabs on shroud, preventing rotation.*



Step 5:

*Place housing assembly onto the register
approximately 15 degrees shy of final position.*





Step 6:

Twist housing assembly 15 degrees clockwise. Use lid hinge (but not lid!) when twisting. The holes for the stopper snap pin should be a little past the midline when completed.



Step 8:

Use any available hard surface (in this case, screwdriver handle) to push stopper snap pin completely flush.



Step 7:

Insert stopper snap pin.

