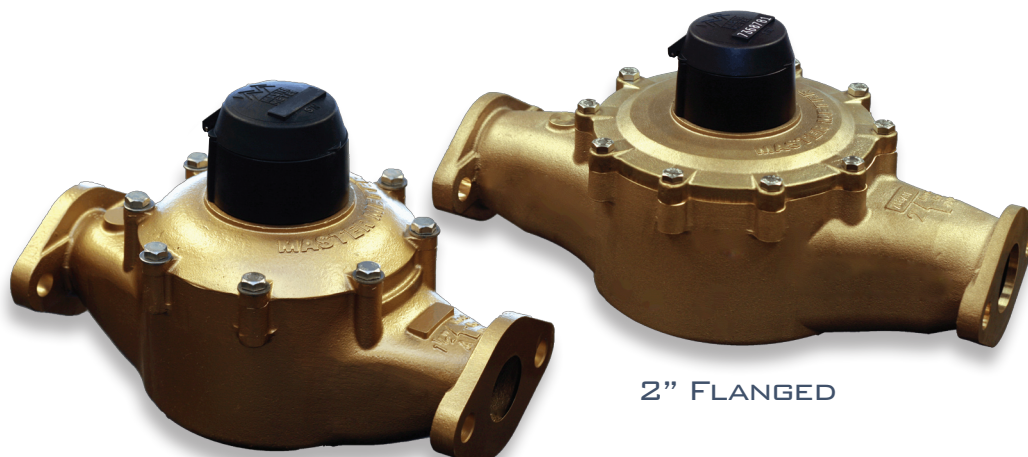


POSITIVE DISPLACEMENT METERS

1.5"- 2"



1.5" FLANGED

2" FLANGED

GET POSITIVE CASH FLOW FROM SMALL COMMERCIAL APPLICATIONS

Put the latest in PD meter technology to work across a wide range of your small commercial applications. Capture more revenue with sustained lifetime accuracy across a broad flow range. Designed for maximum performance to give you exceptional low flow accuracy with minimal headloss at high flow.

Choose a bolted oval flange or threaded design to meet your install needs and enjoy lifelong performance from a meter built to last. Our unique, modular register design allows for hassle-free upgrades to new reading technologies. Smart design enables smart technology — now and in the future.

GO BEYOND ACCURATE MEASURE AND INCREASE OPERATIONAL EFFICIENCY.

Gaining accuracy at the meter helps account for more revenue. Increase operational efficiency and gain even more when you choose our 3G Mobile™ AMR or FixedLinx™ fixed network AMI data management systems. 3G delivers powerful results with 4,000 read data logging and vigilant Revenue Impact Alerts™ monitoring for leaks, theft (*backflow*), tamper, and zero consumption. Our award-winning register design houses all vital components — encoder, RF transmitter, battery and antenna — safely within the register's sealed stainless steel and tempered glass enclosure. We eliminated external wires, components and connections — the #1 cause of maintenance and tamper related issues on competitive designs.

FEATURES:

- * Oscillating piston technology delivers maximum flow with minimal pressure drop
- * Measuring chamber housing and piston measuring element built with advanced, non-hydrolyzing engineered polymer materials
- * Meets or exceeds all AWWA Standards
- * Low headloss of 2.9 PSI at 50 or 80 GPM (1.5" and 2")
- * Improved capability to withstand harsh water conditions
- * Superior low flow capability records every leak
- * With Optional 3G Integrated Register:
 - 3G DataLogs™ Better serve business customers who demand accountability with down-to-the-minute detailed 4,000 point Data Logging Capabilities (scalable / customer defined resolution)

Protect your Utility's Bottom Line:

- Revenue Impact Alerts™ - Leak, Tamper, Theft (backflow), and Zero Consumption
- 3G LeakZones™ Deploy District Metering Areas or Zones (DMA/DMZ) Advanced Infrastructure Leak Management and system balancing programs

REGISTER OPTIONS:

- * DIALOG 3G Integrated AMR Register
- * AccuLinx™ 8-Wheel Resolution Absolute Encoder
- * DIALOG 3G LCD Interpreter™
- * Direct Read

READ:

- * FixedLinx - Fixed Network AMI Solution - (100% migratable using existing 3G Mobile AMR infrastructure)
- * 3G Mobile™ Drive-By AMR
- * Direct Read/Manual

SIZES AVAILABLE: 1.5" & 2"



Reading the Future™

Precision Engineered | Sustained Accuracy | Quiet Operation | AMR/AMI Migratable with 3G

TECHNICAL SPECIFICATIONS:

AWWA Standard - Meets or exceeds all sections of Standard ANSI / AWWA C700, most recent revision for cold water displacement meters with AWWA bronze main cases.

NSF/ANSI Standard 61 - Optional Standard 61-g no - lead main case available.

Design/Operation - Incoming water is continuously divided into crescent-shaped volumes by the action of the inlet ports, chamber interior and piston walls as controlled by the division plate and controller assembly. This hydraulic action causes the center of the oscillating piston measuring element to make continuous circular movements. A drive spindle formed integrally with the piston web moves the drive magnet. A magnetically coupled follower magnet in the register assembly is directly connected to a gear system in the register that totalizes those movements into the desired billing units. The register assembly is removable under line pressure permitting seamless, simplified upgrades in AMR reading technology.

Measuring Chamber - The measuring chamber housing and piston measuring element are constructed of smoothly-finished, non-hydrolyzing engineered polymer materials. The removable chamber is sealed to the main case by a unique elastomeric chamber seal that resists the chances of back pressure seal blowouts or damage to the sealing surfaces and adverse effects on accuracy due to normal pipeline distortions.

Register - Standard Direct Read, 3G LCD Interpreter, and 3G AMR System registers are available. Six wheel odometers are standard. Optional AccuLinx 8-Wheel Resolution Absolute Encoder available. Together, an integrated and migratable technology environment is attained; direct, mobile AMR, and Fixed Network AML.

Register Sealing - All Direct read and DIALOG® registers are IP-68 rated, permanently sealed with a scratch resistant glass lens, stainless steel base and wrap-around gasket to prevent intrusion of dirt or moisture.

Register Units - Registration available in either U.S. gallons, cubic feet or cubic meters.

Magnetic Drive - A reliable, direct magnetic drive provides linkage between measuring element and register so that no gearing is exposed to water.

Test Circle - Large sweep hand with 100 clearly marked graduations prominently on the dial face.

Low Flow/Leak Indicator - Clearly visible leak indicator with high sensitivity resulting from direct linkage to the measuring element.

Main Case - Choice of waterworks bronze case of 81% copper composition, or, 86% copper, no lead bronze. Measuring chamber surfaces that serve as bearing areas are generously dimensioned out of continual water-lubricated, non-hydrolyzing polymer material. These

broad surface areas act to disperse any potential wear over a greater area. Advanced chamber design delivers outstanding low flow accuracy and sustained overall accuracy over a long operating life. Key small wear components such as the division plate, control roller and drive dog are constructed from hydrolytically-stable, lubricated nylon that minimizes localized wear.

Strainer - A rigid, insert-molded strainer is provided with more than 4 times the open area of the pipe. The unique strainer design smoothes the flow of water entering into the meter creating a normalized flow profile. Tough materials operating in a strained environment enable the meters to perform more accurately over time.

Tamper Detection - Design inhibits unauthorized register tampering and removal of the register. This design also provides a visual indication of tampering attempts.

METER OPERATING CHARACTERISTIC/DIMENSION	1 1/2" Thrd	1 1/2" Flg	2" Thrd	2" Flg
Flow Range (gpm) Normal	5 - 100	5 - 100	8 - 160	8 - 160
Continuous Flow (gpm)	50	50	80	80
Flow Range (gpm) Low Flow	1.5	1.5	2	2
Extended Low Flow (gpm @ > 95%)	.75	.75	1.0	1.0
Maximum Working Pressure (psi)	150	150	150	150
Maximum Working Temperature (°F)	105	105	105	105
Specific Displacement (revs/gallon)	5.55	5.55	3.79	3.79
Headloss at Maximum Flow Rate (psi)	10.7	10.7	10.7	10.7
Length (A below)	12.0"	12.8"	15.0"	17.0"
Width (B below)	7.6"	7.6"	9.3"	9.3"
Height, with lid (C below)	8.2"	8.2"	8.5"	8.5"
Height, bottom to center line (D below)	1.5	1.5	1.7	1.7
Weight (lbs)	19.2	22.5	26.6	31.3

Master Meter, Inc.

101 Regency Parkway, Mansfield, TX 76063

Toll Free: 800-765-6518 • Main Line: 817-842-8000 • FAX: 817-842-8100

www.mastermeter.com

©2010 Master Meter, Inc. All rights reserved. DIALOG and Master Meter are registered trademarks of Master Meter, Inc. Master Meter reserves the right to make modifications to the products described herein at any time and without notice. U.S. Patent Nos. 7,135,986; 6,819,292; 6,954,178; 7,493,811 and others pending.



Reading the Future™