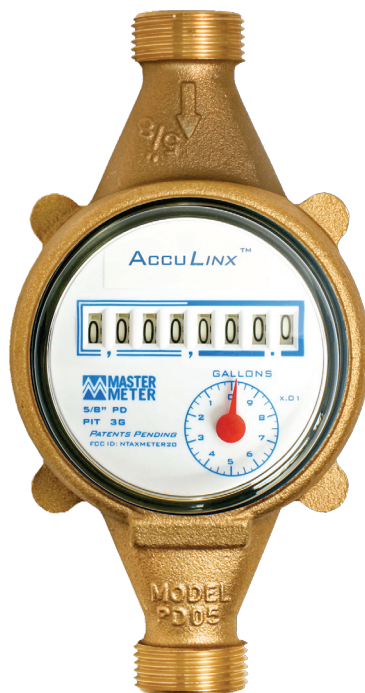


# ACCULINX™ 8-WHEEL RESOLUTION ABSOLUTE ENCODER



## GET ABSOLUTE DATA FROM ABSOLUTELY ANYWHERE

Master Meter's AccuLinx brings you the latest in absolute positional encoding technology with flexible configurations designed to fit virtually any water meter application — and any AMR read system.

For pit set, indoor or difficult-to-read meter locations AccuLinx delivers unconditional remote read accuracy and high-resolution data reporting for advanced usage profiling. Our proprietary absolute encoder module precisely records the exact position of the 8 odometer wheels at the time of remote read. A unique, contactless encoder design eliminates unnecessary mechanical friction for smooth, low-power operation and long-life performance.

## FREEDOM OF CHOICE IN MEASUREMENT AND AMR TECHNOLOGY

AccuLinx gives utilities the freedom to choose Master Meter measurement technology for integration into third-party AMR systems using the widely-accepted Sensus® protocol. AccuLinx is available in a direct connect, battery-free 3-wire configuration — ready to fit in existing competitive AMR systems. Whether you prefer Master Meter's complete 3G AMR/AMI system or simply AccuLinx encoding and our meter technology, the decision and product flexibility are yours to choose.

### READ:

- \* 3rd Party Drive-by AMR Solutions
- \* 3rd party Fixed Network AMI Solutions
- \* FixedLinx™ Meter Data Management Solution – Utilizes the 3G technology backbone with simultaneous Mobile AMR and Fixed Network AMI
- \* 3G Mobile™ Drive-by AMR
- \* Proximity/Wand Read – Wand-style Technology
- \* Direct Read/Manual

### FEATURES & BENEFITS:

- \* Meets or exceeds the AWWA C707 Encoder Register Standard
- \* Resolution for Precise Data Profiling
- \* New Exclusive Contactless Sensing Encoder Technology
- \* Connectivity to most any 3rd Party AMR System using Sensus™ Protocol
- \* Available with integral ConnectionFree™ 3G AMR Technology
- \* Direct Connect, Battery-Free 3-Wire Configuration Available
- \* Requires low Driving Torque and Low Power

### AVAILABLE CONFIGURATIONS:

- \* 3-Wire Potted Pit Set (Utilizing Sensus Protocol)
- \* 3-Wire Indoor Direct Connect (Utilizing Sensus Protocol)
- \* Integral 3G AMR Integrated Pit Set
- \* Integral 3G AMR Indoor Set

**Integral 3G ConnectionFree or 3-Wire Sensus AMR Protocol | 8-Wheel Resolution  
Ideal for Inside Set and Difficult-to-Read Locations | AMR/AMI Compatible**



## TECHNICAL SPECIFICATIONS:

**Absolute Encoder Module** - Proprietary module design features innovative inductive sensing to electronically determine the position of the 8 odometer wheels even in operating environments exposed to piping vibrations, stray magnetic fields, and high ambient light. Each wheel contains a small copper target embedded in the molding and is mounted in close proximity to a circular printed circuit board (PCB) containing a pattern of coils. The PCB electronics determine the position of wheels by sensing the copper targets and measuring the coupling between sets of coils. The *AccuLinx* encoder is contact-free and operates with virtually no friction for long-life with minimal power requirement.

## REGISTER SEALING

### Pit Set

Permanently sealed with impact resistant tempered glass and corrosion resistant stainless steel enclosure. A molded, elastomeric rubber gasket provides the register seal to prevent dirt or moisture intrusion. Register assembly is conducted in a vacuum to eliminate the inclusion of moisture during manufacture.

### Indoor Set

Incorporates a clear, UV resistant polycarbonate lens, slightly convex for maximum strength and impact protection. The register cup is built to protect internal components

with a strong polycarbonate ABS alloy. An O-ring gasket seals the lens to the register cup, preventing environmental intrusion. The register assembly is securely held together by a tamper-proof, mechanical locking ring. The 3-Wire configuration includes a tamper-proof, polycarbonate cover to protect the terminal covers molded into the lens, while still allowing for direct wired terminal connection.

### Register Unit

Registration is available in either gallons, cubic feet or cubic meters.

### Test Circle / Leak Indicator

Clearly visible red sweep hand rotates one increment for every revolution of the far right odometer wheel. Test circle face indicates 50 gradations and 10 numeral marks.

### Magnetic Drive

A reliable, direct magnetic drive provides linkage between the measuring element and register so that no gearing is exposed to water.

## INTEGRAL 3G CONFIGURATION



AccuLinx with integral 3G AMR technology

## UNIVERSAL CONNECTIVITY WITH SENSUS PROTOCOL



AccuLinx with Direct Connection for Indoor/Basement Applications



AccuLinx with Potted Pigtail Connection for Pit Applications

### Master Meter, Inc.

101 Regency Parkway, Mansfield, TX 76063  
Toll Free: 800-765-6518 • Main Line: 817-842-8000 • FAX: 817-842-8100  
MASTERMETER.COM

©2008 Master Meter, Inc. All rights reserved. DIALOG, AccuLinx and Master Meter are registered trademarks of Master Meter, Inc. Master Meter reserves the right to make modifications to the products described herein at any time and without notice. U.S. Patent No. 7,135,986; 6,819,292; 6,954,178; and others pending. Sensus is a registered trademark of Sensus Metering Systems Inc. Master Meter is not associated with nor a distributor of metering products under the registered Sensus trademark.

AR\_0911

